



Dovea GENETICS

COLOURED

DIRECTORY
2024



CONTENTS

Bull Code	Bull Name	Page Number	Bull Code	Bull Name	Page Number	Bull Code	Bull Name	Page Number
Norwegian Red			Montbeliarde Continued			MRI/ Rotbunt		
NR9837 <small>NEW</small>	NR Gard P ♀	1	MO8847	Pompilop ♀	22	<small>NEW</small>	De Vinkenhof Relano	28
NR5881	Roen ♀	2	MO7788	Punto ♀	23	MY7527	Berio DN	28
NR4941	Krovoll ♀	3	MO9163	Monduciel	24	MY7524	Regus DN	29
NR8826 <small>NEW</small>	NR Nerby-P ♀	4	MO6505	Otolib	24	MY7552	Olpe DN	29
NR8829	Sausvatn-PP ♀	5	Ayrshire			Cross Bred		
S4184 <small>NEW</small>	NR Lie ♀	6	AY7053	Visserdale Surano-ET ♀	25	<small>NEW</small>	Castlerock Saint John SRM	30
NR8832	NR Skoien ♀	7	Dairy Shorthorn			FRX131	Renny Oakwood ♀	31
NR6766	Maurstad-PP	8	MSX116	Kundes Golden Badg Fantasy	25	Jersey		
NR4944	Hustad	9	MSX221	Ballytrain Braveheart ♀	26	JE4764	Nextgen Hitman ♀	31
NR8097	Bollingmo	9	Brown Swiss			<small>NEW</small>	Nextgen Banniff ♀	32
Fleckvieh			BS7563	Superbrown Sheldon	27			
SI7911	Hokuspokus ♀	10	BS7569	Superbrown Harvest	27			
SI9061	Vlaturu	11						
SI9825 <small>NEW</small>	Sunshine ♀	12						
SI6580	Irregut PS	13						
SI5791	Sisyphus	14						
SI7893	Vollgenial	15						
SI6577	Womba	15						
SI7707	Valentino ♀	16						
Montbeliarde								
MO9858 <small>NEW</small>	Supreme JB ♀	17						
MO9828 <small>NEW</small>	Tacotac JB ♀	18						
MO9855 <small>NEW</small>	Nitchi JB ♀	19						
MO5638	Neutrino ♀	20						
MO8844	Pavel	21						

♀ Sexed Semen Available



Other Catalogues Available

**Dairy Beef
Directory 2024**



**Dairy
Directory 2024**



Symbols Legend

	Sire Available as Sexed Semen		Transmits both positive chest and rump width or 5 in aAa code
	Available as Ultraplus Sexed Semen		Maintenance figure above €16 which will transmit lower live weights
	Suitable for heifers -Under 5.5% Calving Difficulty with more than 90% reliability or proven easy calving in country of origin		A Sire who is at least 5 days shorter than average with over 90% reliability
	Combined Solids of 0.50% For Irish bulls and +0.20% For International bulls		Faster than average milking speed with positive udders
	Genomic Sires with over €150 Fertility Proven Sires with over €100 Fertility International Sires with over €80 Fertility		Overall Udder Score above 2
	Above €16 Health Sub Index		Overall Conformation Score above 1 for Irish Sires and 1.5 for international Sires
	Carries the red gene for coat colour		Above 170Kg Milk, Above 40Kg Pure Friesian
			Ranked in the 90th Percentile for TB Resistance (Below 6%)

RISKS AND DISCLAIMERS

DOVEA GENETICS LIMITED ("DOVEA") AND SOUTH EASTERN CATTLE BREEDING SOCIETY LIMITED ("SECBS") DRAW YOUR ATTENTION TO THE FOLLOWING:

1 ANY TYPOGRAPHICAL, CLERICAL, OR OTHER ERROR OR OMISSION, MISDESCRIPTION OR MISTAKE IN ANY SALES LITERATURE, QUOTATION, PRICE LIST, ORDER CONFIRMATION, INVOICE OR OTHER DOCUMENT OR INFORMATION ISSUED BY ANY OF DOVEA OR SECBS (INCLUDING WITHOUT LIMITATION THIS DIRECTORY) SHALL BE SUBJECT TO CORRECTION WITHOUT ANY LIABILITY ON THE PART OF ANY OF DOVEA OR SECBS. NO SUCH ERROR, MISDESCRIPTION OR MISTAKE SHALL GIVE RISE TO ANY RIGHT OF ACTION, CLAIM OR ENTITLEMENT TO COMPENSATION OF ANY NATURE WHATSOEVER OR ANY RIGHT OF TERMINATION OR RECISSION.

2 ALL SAMPLES, DRAWINGS, DESCRIPTIVE MATTER, SPECIFICATIONS, ADVERTISING OR ANY OTHER PROMOTIONAL MATERIAL AND ANY DESCRIPTIONS OR ILLUSTRATIONS CONTAINED IN ANY DIRECTORY, CATALOGUES OR BROCHURES (INCLUDING WITHOUT LIMITATION THIS DIRECTORY) ARE ISSUED OR PUBLISHED FOR THE SOLE PURPOSE OF GIVING AN APPROXIMATE IDEA OF THE GOODS AND/OR THE SERVICES DESCRIBED IN THEM AND DO NOT CONSTITUTE ANY MATTERS OF FACT OR REPRESENTATION OR WARRANTY AS TO ITS SUBJECT MATTER OR INDUCING ANY PERSON TO ENTER INTO ANY CONTRACT. THEY SHALL NOT FORM PART OF ANY CONTRACT AND THERE SHALL BE NO SALE BY SAMPLE.

3 SEMEN IS THE PRODUCT OF A NATURAL BIOLOGICAL PROCESS OVER WHICH NEITHER DOVEA NOR SECBS HAS ANY DIRECT CONTROL AND NEITHER DOVEA NOR SECBS WARRANT OR REPRESENT THAT ANY SEMEN THAT ANY OF THEM SUPPLIES:

- (i) WILL RESULT IN A VIABLE PREGNANCY;
- (ii) WILL PRODUCE A CALF THAT EXHIBITS ALL OR ANY OF THE CHARACTERISTICS DESCRIBED IN ANY PROOF;
- (iii) WILL BE FREE FROM DEFECTS, INCLUDING GENETIC DEFECTS; OR
- (iv) WILL YIELD A PARTICULAR NUMBER OF CALVES.

4 IN THE CASE OF SEXED SEMEN, NEITHER DOVEA NOR SECBS WARRANTS OR REPRESENTS THAT THE SORTING LEVELS REFERRED TO IN ITS MARKETING LITERATURE WILL RESULT IN A CORRESPONDING SEX RATIO IN CALVES PRODUCED FROM SEMEN.

ALL ORDERS FOR ANY OF THE GOODS AND/OR SERVICES REFERRED TO IN THIS DIRECTORY SHALL BE SUBJECT TO DOVEA AND SECBS' TERMS AND CONDITIONS FOR THE SUPPLY OF GOODS AND/OR SERVICES AS AMENDED FROM TIME TO TIME. THE CURRENT VERSION OF SUCH TERMS CAN BE READ AT WWW.DOVEAGENETICS.IE. YOUR ATTENTION IS DRAWN TO THE PROVISIONS OF THOSE TERMS HEADED:

- a) APPLICATION OF CONDITIONS AND FORMATION OF CONTRACT
- b) DESCRIPTION OF GOODS OR SERVICES
- c) SEMEN DISTRIBUTION SERVICES
- d) CUSTOMER'S OBLIGATIONS
- e) WARRANTIES
- f) LIMITATION OF LIABILITY

DOVEA GENETICS SIRE ADVICE

Contact our Sire Advice team in Dovea Genetics on
0504 21755 or 0873284317 or email mhayes@doveagenetics.ie
to receive advice on your breeding goals.

NR9837



GENOMIC

NR GARD P

NR: 100%

International ID
RDCNORM000413857509 aAa: N/A



NORWEGIAN RED



Paternal GG Dam of NR Gard P

Kleiva P X Ihlingen

Dam: Gunda - 305 Day Milk Records

Lact	Milk Kg	Fat Kg	Prot. Kg	Solids Kg	Fat %	Protein %
Avg. of 1	5338	291	209	500	5.45	3.91

EBI Nov 23 Source ICBF		Rel.
EBI	€276	36%
Prod. SI	€91	57%
Milk Kg	119	57%
Fat	18kg +0.23%	57%
Protein	11kg +0.12%	57%
Fert. SI	€90	20%
Calv. Int	-4.70	22%
Survival %	2.46	13%
Beef	-€16	35%

EBI Nov 23 Source ICBF		Rel.
Calving	€52	14%
Calv. Diff. Cow	1.87%	24%
Calv. Diff. Hfr	4.78%	11%
Gest. Len (Days)	-3.77	11%
Health	€22	43%
Maint. SI	€25	32%
Mgmt. SI	€3	15%
Milk Time (Secs)	-21.72	20%
Temperament	-0.11	11%



Total Merit Index: 40		Norway Dec. 2023	
Milk Kg	105		
Fat	128kg	134%	
Protein	114kg	114%	
Milk, Fat & Protein Index		129	
Temperament	109	Milking Speed	96
Disease Res.	99	Fertility (dau.)	119
Mastitis Res.	108	Calving Ease	119
SCC	135	Udder Health	133
Type Traits			
Stature	104	Feet & Legs	109
Chest Width	90	Udder	106
Beef (Male)	94	Body Depth	102

- Highest NR Milk Subindex Sire
- +29Kg Of Milk Solids
- Dam 5.45% Fat & 3.91% Protein
- Maintenance €25

Norwegian Red

Norwegian Red

NR5881

DoveaGENETICS

DAUGHTER PROVEN

ROEN

NR: 100%

International ID
RDCNORM000000011690 aAa: 516



NORWEGIAN RED



Roen (NR5881)

Skei X Velsvik

Dam: 368 NOR - 305 Day Milk Records

Lact	Milk Kg	Fat Kg	Prot. Kg	Solids Kg	Fat %	Protein %
Avg. of 2	8423	502	358	860	4.24	3.28

Irish Daughter 305 Day Milk Records

Parity	Dtrs	Herds	Milk Kg	Fat Kg	Prot Kg	Solids Kg	Fat %	Prot %
1	72	34	5180	233	186	419	4.50	3.59

EBI Nov 23 Source ICBF			Rel.	EBI Nov 23 Source ICBF			Rel.
EBI	€308		77%	Calving	€39		97%
Prod. SI	€69		87%	Calv. Diff. Cow	2.19%		98%
Milk Kg	175		87%	Calv. Diff. Hfr	5.40%		98%
Fat	15kg	+0.13%	87%	Gest. Len (Days)	-2.78		99%
Protein	9kg	+0.06%	87%	Health	€21		63%
Fert. SI	€144		65%	Maint. SI	€27		50%
Calv. Int	-6.85		68%	Mgmt. SI	-€1		58%
Survival %	4.63		58%	Milk Time (Secs)	-13.34		78%
Beef	-€3		86%	Temperament	-0.15		43%



Total Merit Index: 15		Norway Dec. 2023	
Milk Kg	118		
Fat	131kg	116%	
Protein	122kg	102%	
Milk, Fat & Protein Index		129	
Temperament	118	Milking Speed	116
Disease Res.	109	Fertility (dau.)	99
Mastitis Res.	111	Calving Ease	121
SCC	107	Udder Health	108
Type Traits			
Stature	83	Feet & Legs	87
Chest Width	80	Udder	98
Beef (Male)	79	Body Depth	85

- No.1 NR EBI Sire €308
- Fertility €144
- Extremely Easy Calving

Norwegian Red

Norwegian Red

NR4941



DAUGHTER PROVEN

KROVOLL

NR: 100%



International ID
RDCNORM000000011921 aAa: 435

NORWEGIAN RED

EBI Nov 23 Source ICBF			Rel.	EBI Nov 23 Source ICBF			Rel.
EBI	€254		83%	Calving	€52	93%	
Prod. SI	€66		94%	Calv. Diff. Cow	2.76%	94%	
Milk Kg	175		94%	Calv. Diff. Hfr	6.66%	73%	
Fat	10kg	+0.13%	94%	Gest. Len (Days)	-4.64	98%	
Protein	9kg	+0.11%	94%	Health	€23	66%	
Fert. SI	€87		73%	Maint. SI	€14	68%	
Calv. Int	-4.64		75%	Mgmt. SI	€4	60%	
Survival %	2.32		68%	Milk Time (Secs)	-14.28	83%	
Beef	€5		88%	Temperament	-0.02	41%	

Norwegian Red



Daughter of Krovoll (NR4941)

Reitan 2 X EIK

Dam: 611 NOR - 305 Day Milk Records

Lact	Milk Kg	Fat Kg	Prot. Kg	Solids Kg	Fat %	Protein %
Avg. of 2	9186	401	334	735	4.38	3.64

Irish Daughter 305 Day Milk Records

Parity	Dtrs	Herds	Milk Kg	Fat Kg	Prot Kg	Solids Kg	Fat %	Prot %
1	74	22	4689	200	170	370	4.27	3.63
2	47	18	5472	237	200	437	4.33	3.65



Total Merit Index: 7		Norway Dec. 2023	
Milk Kg	97		
Fat	112kg	120%	
Protein	112kg	128%	
Milk, Fat & Protein Index	116		
Temperament	105	Milking Speed	101
Disease Res.	108	Fertility (dau.)	100
Mastitis Res.	108	Calving Ease	99
SCC	100	Udder Health	102
Type Traits			
Stature	117	Feet & Legs	69
Chest Width	115	Udder	102
Beef (Male)	104	Body Depth	113

- Proven Components & Moderate Milk KG
- No.1 Proven Protein % Bull in Norway (128)
- Hard Working Cows

Norwegian Red

NR8826



GENOMIC

NR NERBY-P

NR: 100%

International ID
RDCNORM000000012255 aAa: 432



NORWEGIAN RED



GGDam of NR Nerby -P (NR8826)

Lysevoll X Nedrebo

Dam: 597 NOR - 305 Day Milk Records

Lact	Milk Kg	Fat Kg	Prot. Kg	Solids Kg	Fat %	Protein %
Avg. of 2	7566	399	302	701	5.28	3.99

EBI Nov 23 Source ICBF			Rel.	EBI Nov 23 Source ICBF			Rel.
EBI	€242		41%	Calving	€43		35%
Prod. SI	€63		59%	Calv. Diff. Cow	2.61%		52%
Milk Kg	42		59%	Calv. Diff. Hfr	6.44%		33%
Fat	11kg	+0.17%	59%	Gest. Len (Days)	-3.49		32%
Protein	7kg	+0.10%	59%	Health	€20		45%
Fert. SI	€84		22%	Maint. SI	€26		32%
Calv. Int	-4.72		24%	Mgmt. SI	€2		40%
Survival %	1.99		17%	Milk Time (Secs)	-18.92		55%
Beef	-€9		35%	Temperament	-0.11		28%



Total Merit Index: 41		Norway Dec. 2023	
Milk Kg	77		
Fat	106kg	148%	
Protein	87kg	129%	
Milk, Fat & Protein Index	111		
Temperament	111	Milking Speed	92
Disease Res.	99	Fertility (dau.)	116
Mastitis Res.	131	Calving Ease	98
SCC	142	Udder Health	143
Type Traits			
Stature	105	Feet & Legs	93
Chest Width	80	Udder	118
Beef (Male)	99	Body Depth	69

- No. 1 Protein % Norwegian Index Bull (129)
- No. 1 Fat % Norwegian Red Index Bull (148)
- No.1 Udder Health Index Bull (143)
- Dam is 5% Fat & 4% Protein

Norwegian Red

Norwegian Red

NR8829



DAUGHTER PROVEN

SAUSVATN-PP

NR: 100%

International ID
RDCNORM000000012116 aAa: N/A

PED

 **NORWEGIAN RED**



Sausvatn-PP (NR8829)

Ofstad X Olterud

Dam: Bendikte - 305 Day Milk Records

Lact	Milk Kg	Fat Kg	Prot. Kg	Solids Kg	Fat %	Protein %
Avg. of 5	8198	437	301	738	5.35	3.67

EBI Nov 23 <small>Source ICBF</small>			Rel.	EBI Nov 23 <small>Source ICBF</small>			Rel.
EBI	€240		46%	Calving	€44	43%	
Prod. SI	€48		66%	Calv. Diff. Cow	2.18%	81%	
Milk Kg	-28		66%	Calv. Diff. Hfr	5.66%	34%	
Fat	8kg	+0.15%	66%	Gest. Len (Days)	-3.48	32%	
Protein	5kg	+0.11%	66%	Health	€25	47%	
Fert. SI	€88		29%	Maint. SI	€25	32%	
Calv. Int	-4.09		31%	Mgmt. SI	-€3	41%	
Survival %	2.92		25%	Milk Time (Secs)	-2.12	57%	
Beef	-€1		35%	Temperament	-0.09	29%	



Total Merit Index: 29		Norway Dec. 2023	
Milk Kg	113		
Fat	123kg	118%	
Protein	123kg	121%	
Milk, Fat & Protein Index		131	
Temperament	110	Milking Speed	99
Disease Res.	76	Fertility (dau.)	93
Mastitis Res.	94	Calving Ease	105
SCC	117	Udder Health	113
Type Traits			
Stature	92	Feet & Legs	98
Chest Width	96	Udder	105
Beef (Male)	84	Body Depth	109

- Higher Production Bull (131)
- Very High Percentages
- Homozygous Polled
- Low Stature

Norwegian Red

Norwegian Red

S4184

NR LIE

NR: 100%

International ID
RDCNORM000000012241 aAa: 432



NORWEGIAN RED



Half Sister of NR Lie (S4184)

Storflor X Alm

Dam: 186 NOR - 305 Day Milk Records

Lact	Milk Kg	Fat Kg	Prot. Kg	Solids Kg	Fat %	Protein %
Avg. of 3	7605	361	287	648	4.75	3.77

EBI Nov 23 Source ICBF		Rel.
EBI	€216	46%
Prod. SI	€64	65%
Milk Kg	88	65%
Fat	12kg +0.15%	65%
Protein	8kg +0.09%	65%
Fert. SI	€77	29%
Calv. Int	-3.97	32%
Survival %	2.21	22%
Beef	€11	36%

EBI Nov 23 Source ICBF		Rel.
Calving	€49	44%
Calv. Diff. Cow	2.42%	56%
Calv. Diff. Hfr	6.08%	40%
Gest. Len (Days)	-4.17	43%
Health	€8	47%
Maint. SI	€6	32%
Mgmt. SI	€1	40%
Milk Time (Secs)	-11.99	56%
Temperament	-0.08	28%



Total Merit Index: 48		Norway Dec. 2023	
Milk Kg	114		
Fat	124kg	121%	
Protein	122kg	120%	
Milk, Fat & Protein Index	132		
Temperament	111	Milking Speed	104
Disease Res.	100	Fertility (dau.)	111
Mastitis Res.	113	Calving Ease	94
SCC	116	Udder Health	117
Type Traits			
Stature	117	Feet & Legs	106
Chest Width	99	Udder	126
Beef (Male)	108	Body Depth	103

- Flawless Norwegian Index
- Milk Kg & Components
- Low Stature Balanced Frames & Perfect Udders (126)

Norwegian Red

Norwegian Red

NR8832



GENOMIC

NR SKOIEN

NR: 100%

International ID
RDCNORM000000012222 aAa: 432



NORWEGIAN RED



Half Sister of NR Skoien (NR8832)

Storflor X Alm

Dam: Anneli - 305 Day Milk Records

Lact	Milk Kg	Fat Kg	Prot. Kg	Solids Kg	Fat %	Protein %
Avg. of 3	9880	442	353	895	4.48	3.58

EBI Nov 23 Source ICBF			Rel.	EBI Nov 23 Source ICBF			Rel.
EBI	€245		48%	Calving	€56	53%	
Prod. SI	€54		65%	Calv. Diff. Cow	2.27%	84%	
Milk Kg	54		65%	Calv. Diff. Hfr	6.33%	41%	
Fat	11kg	+0.16%	65%	Gest. Len (Days)	-5.21	43%	
Protein	6kg	+0.07%	65%	Health	€16	49%	
Fert. SI	€87		30%	Maint. SI	€16	33%	
Calv. Int	-4.34		33%	Mgmt. SI	€7	43%	
Survival %	2.60		23%	Milk Time (Secs)	-33.07	59%	
Beef	€2		36%	Temperament	-0.09	30%	



Total Merit Index: 55		Norway Dec. 2023	
Milk Kg	124		
Fat	136kg	117%	
Protein	135kg	116%	
Milk, Fat & Protein Index	140		
Temperament	112	Milking Speed	104
Disease Res.	105	Fertility (dau.)	110
Mastitis Res.	119	Calving Ease	103
SCC	122	Udder Health	123
Type Traits			
Stature	132	Feet & Legs	118
Chest Width	100	Udder	130
Beef (Male)	109	Body Depth	104

- No.1 Sire on Norwegian Index (TMI 55)
- Well Balanced Bull with Great Fertility
- No.1 Norwegian Red for Direct Gestation Length
- Impressive Heifers Inspected

Norwegian Red

Norwegian Red

NR6766



DAUGHTER PROVEN

MAURSTAD-PP

NR: 100%

International ID
RDCNORM000000012009 aAa: 423

PED

 **NORWEGIAN RED**



Half Sister of Maurstad-PP (NR6766)

Sitje X Nymoer-P

Dam: Bente - 305 Day Milk Records

Lact	Milk Kg	Fat Kg	Prot. Kg	Solids Kg	Fat %	Protein %
Avg. of 3	7135	308	260	568	4.31	3.64

EBI Nov 23 <small>Source ICBF</small>			Rel.	EBI Nov 23 <small>Source ICBF</small>			Rel.
EBI	€268		66%	Calving	€63	88%	
Prod. SI	€65		79%	Calv. Diff. Cow	2.02%	91%	
Milk Kg	76		79%	Calv. Diff. Hfr	5.82%	71%	
Fat	14kg	+0.19%	79%	Gest. Len (Days)	-5.87	95%	
Protein	7kg	+0.08%	79%	Health	€7	54%	
Fert. SI	€94		59%	Maint. SI	€21	43%	
Calv. Int	-6.30		61%	Mgmt. SI	€1	46%	
Survival %	1.19		53%	Milk Time (Secs)	-11.34	64%	
Beef	€7		51%	Temperament	-0.07	32%	



Total Merit Index: 21		Norway Dec. 2023	
Milk Kg	97		
Fat	109kg	120%	
Protein	105kg	118%	
Milk, Fat & Protein Index	113		
Temperament	116	Milking Speed	107
Disease Res.	111	Fertility (dau.)	102
Mastitis Res.	102	Calving Ease	115
SCC	90	Udder Health	91
Type Traits			
Stature	107	Feet & Legs	118
Chest Width	111	Udder	108
Beef (Male)	99	Body Depth	91

- Very Well Proven
- Balanced Index
- Homozygous Polled

Norwegian Red

Norwegian Red

NR4944

DAUGHTER PROVEN

NR: 100%

HUSTAD

International ID
RDCNORM000000011817 aAa: 435



Crossbred Hustad Daughter in New Zealand

PED

Easy Calving

Fertility Improver

Robot Milking

Reitan 2 X Velsvik

Irish Daughter 305 Day Milk Records

Parity	Dtrs	Herds	Milk Kg	Fat Kg	Prot Kg	Solids Kg	Fat %	Prot %
1	10	4	4706	218	171	389	4.63	3.63
2	5	3	6121	275	218	493	4.49	3.56

EBI Nov 23	Source ICBF	Rel.	EBI Nov 23	Source ICBF	Rel.
EBI	€247	71%	Calving	€54	81%
Prod. SI	€52	86%	Calv. Diff. Cow	2.54%	89%
Milk Kg	28	86%	Calv. Diff. Hfr	5.47%	62%
Fat	10kg +0.16%	86%	Gest. Len (Days)	-4.57	89%
Protein	6kg +0.08%	86%	Health	€9	61%
Fert. SI	€102	61%	Maint. SI	€12	51%
Calv. Int	-5.00	64%	Mgmt. SI	€4	55%
Survival %	3.11	52%	Milk Time (Secs)	-24.15	73%
Beef	€4	63%	Temperament	-0.1	41%

- Proven Percentages in Irish Systems
- Easy Calving - Suitable for Heifers

NR8097

DAUGHTER PROVEN

NR: 100%

BOLLINGMO

International ID
RDCNORM000000011441 aAa: N/A



Half Sister to Bollingmo (NR8097)

PED

Health Improver

Fertility Improver

Reduced Cow Size

Tranmæl X Hauske

Dam: Fredlin - 305 Day Milk Records

Lact	Milk Kg	Fat Kg	Prot. Kg	Solids Kg	Fat %	Protein %
Avg. of 4	8903	399	304	703	4.48	3.42

EBI Nov 23	Source ICBF	Rel.	EBI Nov 23	Source ICBF	Rel.
EBI	€299	61%	Calving	€26	70%
Prod. SI	€65	80%	Calv. Diff. Cow	3.27%	81%
Milk Kg	79	80%	Calv. Diff. Hfr	9.07%	48%
Fat	11kg +0.13%	80%	Gest. Len (Days)	-3.48	76%
Protein	8kg +0.10%	80%	Health	€16	44%
Fert. SI	€148	57%	Maint. SI	€32	32%
Calv. Int	-7.57	59%	Mgmt. SI	-€5	39%
Survival %	4.22	52%	Milk Time (Secs)	1.87	54%
Beef	-€5	35%	Temperament	-0.11	28%

- 19 Kg of Solids
- Maintenance €32

Norwegian Red

Norwegian Red

SI7911



DAUGHTER PROVEN

HOKUSPOKUS

SI: 100%

International ID
SIMDEUM000951718913 aAa: 531

PED



GGI-SPERMEX
Genetics made in Germany



Talla, Daughter of HokusPokus (SI7911)

Hurly X Narr *TA

Daughter 305 Day Milk Records

Parity	Dtrs	Milk Kg	Fat Kg	Prot Kg	Solids Kg	Fat %	Prot %
1	819	7663	333	276	608	4.34	3.60
2	545	8444	367	315	682	4.35	3.73
3	162	8573	367	307	674	4.28	3.58

EBI Nov 23 Source ICBF			Rel.	EBI Nov 23 Source ICBF			Rel.
EBI	€148		50%	Calving	-€25		88%
Prod. SI	€73		75%	Calv. Diff. Cow	5.05%		90%
Milk Kg	76		75%	Calv. Diff. Hfr	12.58%		60%
Fat	12kg	+0.15%	75%	Gest. Len (Days)	-0.17		96%
Protein	9kg	+0.12%	75%	Health	€14		44%
Fert. SI	€41		15%	Maint. SI	€0		33%
Calv. Int	-2.19		17%	Mgmt. SI	-€3		38%
Survival %	1.11		9%	Milk Time (Secs)	-35.73		56%
Beef	€66		39%	Temperament	-0.38		24%



Total Merit Index: 133 Germany Dec. 2023

Milk	MI 119 (Rel. 99%)			
Milk Kg	+360			
Fat	+28kg	+0.15%		
Protein	+27kg	+0.17%		
Beef	Beef Index 109 (Rel. 99%)			
Daily Net Gain	109	Carcass %	110	EUROP 101
Fitness	Fitness Index 115 (Rel. 97%)			
Persistency	99	Milking Speed	99	
Vitality	107	Fertility (mat.)	114	
Longevity	104	Calving Ease	107	
SCC	114	Udder Health	115	
Type Traits				
Frame	110	Feet & Legs	113	
Muscling	100	Udder	124	

- Hottest Bull in the Breed TMI (133)
- Daughters Average 8444 Kg, 4.35% Fat & 3.73% Protein
- Perfect Udders & Teat Placement for Robotic mMilking
- Easy Calving & Great Fertility

Fleckvieh

Fleckvieh

SI9061



DAUGHTER PROVEN

VLATURO

SI: 100%

International ID
SIMDEUM000816476213 aAa: 564



GGI-SPERMEX
Genetics made in Germany



Daughter of Vlaturo (SI9061)

Vlaro X Hutera

Daughter 305 Day Milk Records

Parity	Dtrs	Milk Kg	Fat Kg	Prot Kg	Solids Kg	Fat %	Prot %
1	610	7036	314	247	561	4.46	3.51
2	442	7916	365	289	654	4.61	3.65
3	185	8489	386	314	700	4.55	3.70

EBI Nov 23 Source ICBF			Rel.	EBI Nov 23 Source ICBF			Rel.
EBI	€182		48%	Calving	-€1		36%
Prod. SI	€72		76%	Calv. Diff. Cow	3.61%		41%
Milk Kg	77		76%	Calv. Diff. Hfr	9.45%		35%
Fat	17kg	+0.23%	76%	Gest. Len (Days)	0.53		37%
Protein	8kg	+0.09%	76%	Health	€26		48%
Fert. SI	€71		22%	Maint. SI	-€19		35%
Calv. Int	-3.88		23%	Mgmt. SI	-€14		39%
Survival %	1.79		19%	Milk Time (Secs)	-20.3		60%
Beef	€70		38%	Temperament	-0.56		23%



Total Merit Index: 128				Germany Dec. 2023			
Milk		MI 120 (Rel. 99%)		Milk Kg		+65	
Fat		+49kg		Protein		+0.57%	
Beef		+14kg		Beef		+0.14%	
Daily Net Gain		100		Beef Index 103 (Rel. 98%)			
Carcass %		105		EUROP		101	
Fitness		Fitness Index 110 (Rel. 96%)		Persistence		105	
Vitality		99		Milking Speed		106	
Longevity		101		Fertility (mat.)		112	
SCC		108		Calving Ease		109	
				Udder Health		109	
Type Traits							
Frame		112		Feet & Legs		112	
Muscling		104		Udder		112	

- Incredible Solids at +0.57% Fat & Protein +0.14%
- Daughters Average 7916Kg 4.61% Fat & 3.65% Protein
- Gdam Produced 4.85% Fat & 3.82% Protein

Fleckvieh

Fleckvieh

SI9825

SUNSHINE

SI: 100%

International ID
SIMDEUM000955642886 aAa: 543

PED



Sunshine

Sisyphus X Waban

Dam: Livia - 305 Day Milk Records

Lact	Milk Kg	Fat Kg	Prot. Kg	Solids Kg	Fat %	Protein %
Avg. of 4	8505	420	313	733	4.94	3.68

NEW

Milk Solids Improver

A2/A2

Sexed Semen Available

Total Merit Index: 138		Germany Dec. 2023	
Milk	MI 125	(Rel. 87%)	
Milk Kg	+377		
Fat	+49kg	+0.39%	
Protein	+24kg	+0.13%	
Beef	Beef Index 109 (Rel. 80%)		
Daily Net Gain	102	Carcass %	108
		EUROP	109
Fitness		Fitness Index 119 (Rel. 86%)	
Persistency	109	Milking Speed	120
Vitality	112	Fertility (mat.)	113
Longevity	115	Calving Ease	109
SCC	112	Udder Health	109
Type Traits			
Frame	96	Feet & Legs	101
Muscling	106	Udder	106

- Smaller Frame, One of the Most Used Genomic Sires in Germany
- Strength & Muscularity, Fit Calves
- Great Components +0.39% & +0.13%

Fleckvieh

Fleckvieh

SI6580



DAUGHTER PROVEN

IRREGUT PS

SI: 100%

International ID
SIMDEUM000950075810 aAa: 435

PED



Daughter of Irregut PS (SI6580)

Irokese PS X Mungo PP

Daughter 305 Day Milk Records

Parity	Dtrs	Milk Kg	Fat Kg	Prot Kg	Solids Kg	Fat %	Prot %
1	1289	7527	342	272	614	4.54	3.62
2	539	8543	384	315	700	4.5	3.69
3	220	8608	392	316	708	4.55	3.67

EBI Nov 23 Source ICBF			Rel.	EBI Nov 23 Source ICBF			Rel.
EBI	€166		55%	Calving	-€24		93%
Prod. SI	€111		78%	Calv. Diff. Cow	4.47%		97%
Milk Kg	236		78%	Calv. Diff. Hfr	10.41%		57%
Fat	24kg	+0.25%	78%	Gest. Len (Days)	1.83		99%
Protein	14kg	+0.10%	78%	Health	€22		46%
Fert. SI	€43		17%	Maint. SI	-€10		37%
Calv. Int	-2.48		19%	Mgmt. SI	-€11		38%
Survival %	0.97		12%	Milk Time (Secs)	-21.44		55%
Beef	€64		61%	Temperament	-0.49		24%



Total Merit Index: 123				Germany Dec. 2023			
Milk		MI 131 (Rel. 99%)					
Milk Kg		+631					
Fat		+58kg	+0.36%				
Protein		+37kg	+0.17%				
Beef		Beef Index 110 (Rel. 99%)					
Daily Net Gain	120	Carcass %	105	EUROP	104		
Fitness		Fitness Index 85 (Rel. 97%)					
Persistency	93	Milking Speed	101				
Vitality	98	Fertility (mat.)	81				
Longevity	87	Calving Ease	101				
SCC	100	Udder Health	101				
Type Traits							
Frame	111	Feet & Legs	95				
Muscling	110	Udder	96				

- Highest Protein Sire +0.17%
- Daughters Average 8543 Kg, 4.50% Fat & 3.69% Protein
- Adds Capacity & Strength
- High EBI (€166)

Fleckvieh

Fleckvieh

SI5791

SISYPHUS

International ID
SIMDEUM000666439378 aAa: 435

SI: 100%



Daughter of Sisyphus (SI5791)

Symposium X Wille

Daughter 305 Day Milk Records

Parity	Dtrs	Milk Kg	Fat Kg	Prot Kg	Solids Kg	Fat %	Prot %
1	4670	7366	320	259	579	4.34	3.52
2	1941	8031	353	288	642	4.4	3.59
3	1288	8693	378	307	685	4.35	3.53



DAUGHTER PROVEN

EBI Nov 23 Source ICBF			Rel.	EBI Nov 23 Source ICBF			Rel.
EBI	€151		76%	Calving	€4		97%
Prod. SI	€69		84%	Calv. Diff. Cow	3.72%		98%
Milk Kg	173		84%	Calv. Diff. Hfr	8.96%		91%
Fat	12kg	+0.09%	84%	Gest. Len (Days)	0.20		99%
Protein	10kg	+0.07%	84%	Health	€23		62%
Fert. SI	€30		60%	Maint. SI	-€8		60%
Calv. Int	-0.90		57%	Mgmt. SI	-€10		54%
Survival %	1.47		69%	Milk Time (Secs)	-25.65		81%
Beef	€70		94%	Temperament	-0.50		32%



Total Merit Index: 124				Germany Dec. 2023			
Milk		MI 110		(Rel. 99%)			
Milk Kg				+95			
Fat		+25kg		+0.26%			
Protein		+7kg		+0.05%			
Beef				Beef Index 114		(Rel. 99%)	
Daily Net Gain	109	Carcass %	108	EUROP	115		
Fitness				Fitness Index 111		(Rel. 99%)	
Persistence	101	Milking Speed	121				
Vitality	105	Fertility (mat.)	112				
Longevity	102	Calving Ease	112				
SCC	113	Udder Health	108				
Type Traits							
Frame	89	Feet & Legs	100				
Muscling	113	Udder	120				

- Small Frame with Plenty Of Milk
- Long Lasting Cows with Great Fertility (112)
- Easy Calving- Suitable for Heifers
- Grazing Bull

Fleckvieh

Fleckvieh

SI7893

DAUGHTER PROVEN

SI: 100%

VOLLGENIAL

International ID
SIMDEUM000951128330 aAa: N/A

PED



Daughter of Vollgenial (SI7893)

Voltaire X Wonderfull

Daughter 305 Day Milk Records

Parity	Dtrs	Milk Kg	Fat Kg	Prot Kg	Solids Kg	Fat %	Prot %
1	292	7171	328	254	582	4.58	3.54
2	220	7711	352	280	632	4.56	3.63
3	141	8401	388	302	691	4.62	3.60

EBI Nov 23	Source ICBF	Rel.	EBI Nov 23	Source ICBF	Rel.
EBI	€158	51%	Calving	-€7	70%
Prod. SI	€65	78%	Calv. Diff. Cow	3.67%	65%
Milk Kg	66	78%	Calv. Diff. Hfr	8.96%	40%
Fat	12kg +0.16%	78%	Gest. Len (Days)	1.52	82%
Protein	8kg +0.10%	78%	Health	€16	46%
Fert. SI	€40	18%	Maint. SI	€4	34%
Calv. Int	-1.91	20%	Mgmt. SI	-€4	38%
Survival %	1.27	12%	Milk Time (Secs)	-54.54	56%
Beef	€58	41%	Temperament	-0.58	23%

- + 0.46 % Fat & +0.17 % Protein
- Daughters Average 7711 Kg, 4.56 % Fat & 3.63 % Protein

SI6577

DAUGHTER PROVEN

SI: 100%

WOMBA

International ID
SIMDEUM000948763199 aAa: 435

PED



Daughter of Womba (SI6577)

GS Wohltat X Samba

Daughter 305 Day Milk Records

Parity	Dtrs	Milk Kg	Fat Kg	Prot Kg	Solids Kg	Fat %	Prot %
1	505	6756	288	243	531	4.26	3.59
2	398	7632	327	282	609	4.29	3.69
3	324	7985	341	289	630	4.27	3.62

EBI Nov 23	Source ICBF	Rel.	EBI Nov 23	Source ICBF	Rel.
EBI	€187	53%	Calving	€6	78%
Prod. SI	€76	78%	Calv. Diff. Cow	3.70%	70%
Milk Kg	100	78%	Calv. Diff. Hfr	8.74%	63%
Fat	11kg +0.12%	78%	Gest. Len (Days)	0.04	90%
Protein	11kg +0.12%	78%	Health	€18	46%
Fert. SI	€55	19%	Maint. SI	-€7	36%
Calv. Int	-3.42	21%	Mgmt. SI	-€2	37%
Survival %	0.99	14%	Milk Time (Secs)	-46.51	56%
Beef	€57	47%	Temperament	-0.46	22%

- Exceptional Longevity (113)
- Daughters Average 7632 Kg, 4.29 % Fat & 3.69 % Protein

Fleckvieh

Fleckvieh

SI7707

VALENTINO

SI: 100%

International ID
SIMDEUM000948023764 aAa: 453

PED



Daughter of Valentino (SI7707)

Vanadin X Rau

Daughter 305 Day Milk Records

Parity	Dtrs	Milk Kg	Fat Kg	Prot Kg	Solids Kg	Fat %	Prot %
1	1025	6698	285	234	519	4.25	3.50
2	696	7772	334	276	610	4.30	3.55
3	456	8296	357	291	648	4.30	3.51

EBI Nov 23 Source ICBF			Rel.	EBI Nov 23 Source ICBF			Rel.
EBI	€185		50%	Calving	-€12		58%
Prod. SI	€67		76%	Calv. Diff. Cow	3.57%		55%
Milk Kg	209		76%	Calv. Diff. Hfr	8.31%		35%
Fat	10kg	+0.02%	76%	Gest. Len (Days)	2.48		67%
Protein	11kg	+0.07%	76%	Health	€18		45%
Fert. SI	€71		20%	Maint. SI	€2		38%
Calv. Int	-4.07		21%	Mgmt. SI	-€11		37%
Survival %	1.57		16%	Milk Time (Secs)	-14.96		55%
Beef	€67		41%	Temperament	-0.44		22%



Total Merit Index: 108 Germany Dec. 2023

Milk	MI 107 (Rel. 99%)	
Milk Kg	+104	
Fat	+13kg	+0.11%
Protein	+9kg	+0.06%
Beef	Beef Index 119 (Rel. 99%)	
Daily Net Gain	124	Carcass %
	111	EUROP
	113	
Fitness	Fitness Index 91 (Rel. 98%)	
Persistency	90	Milking Speed
		105
Vitality	88	Fertility (mat.)
		89
Longevity	92	Calving Ease
		86
SCC	108	Udder Health
		107
Type Traits		
Frame	94	Feet & Legs
		95
Muscling	116	Udder
		110

- Moderate Milk & Nice Components
- Daughters Average 7772 kg Milk, 4.3 % Fat & 3.55% Protein
- Improves Beef Characteristics
- Sexed Semen Only

MO9858

SUPREME JB

MO : 100%

International ID
MONFRAM004416580707 aAa: 423

PED



Dam of Supreme JB

Ocelot X Mauleon JB

Dam: 305 Day Milk Records

Lact	Milk Kg	Fat Kg	Prot. Kg	Solids Kg	Fat %	Protein %
2nd Lact	9176	375	376	752	4.09	4.10

NEW

Milk Solids Improver

Easy Calving

Sexed Semen Available

ISU: 163		(Rel: 75%)	France Dec. 2023
Daughters		0	
INEL		66	
Milk		529	
Fat		45kg	0.40%
Protein		51kg	0.52%
Udder Health	-0.4	Reproduction	2
SCC	-0.5	Fertility (Cows)	1.6
Mastitis	0	Fertility (Heifers)	1.6
Longevity	1.2	Calving Ease	95
Temperament	97	Milking Speed	118
Type		123	
Format	100	Feet & Legs	121
Muscling	94	Udder	128
Teats	104	Beef	94

- The No.1 Protein % Sire in the Breed
- +0.52% Protein & +0.4% Fat
- 4% Protein Dam
- Great Udders

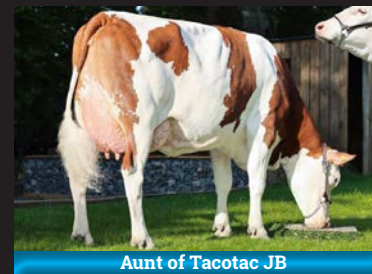
MO9828

TACOTAC JB

MO : 100%

International ID
MONFRAM004416580763 aAa: 561

PED



Aunt of Tacotac JB



Dam of Tacotac JB

Perdu JB X Milton

Dam: 305 Day Milk Records

Lact	Milk Kg	Fat Kg	Prot. Kg	Solids Kg	Fat %	Protein %
1st lact.	7683	331	272	603	4.31	3.54

ISU: 178		(Rel: 71%) France Dec. 2023	
Daughters		0	
INEL		46	
Milk		652	
Fat	41kg	0.23%	
Protein	35kg	0.21%	
Udder Health	2.5	Reproduction	0.9
SCC	2.6	Fertility (Cows)	1.1
Mastitis	2.1	Fertility (Heifers)	0.6
Longevity	2.6	Calving Ease	95
Temperament	107	Milking Speed	107
Type		121	
Format	101	Feet & Legs	115
Muscling	105	Udder	125
Teats	113	Beef	105

- High Component, High ISU Sire
- Longevity Improver (2.6)
- Adds Chest & Rump Width

Montbéliarde

Montbéliarde

MO9855

DoveaGENETICS

DAUGHTER PROVEN

NITCHI JB

MO : 100%

International ID
MONFRAM002252043965 aAa: 561

PED



Daughter of Nitchi JB

Hitchi X Triomphe

Dam: 305 Day Milk Records

Lact	Milk Kg	Fat Kg	Prot. Kg	Solids Kg	Fat %	Protein %
4th lact.	8483	320	305	625	3.77	3.60



Nitchi JB



ISU: 142	(Rel: 95%)	France Dec. 2023	
Daughters		392	
INEL		40	
Milk		539	
Fat	29kg	0.09%	
Protein	33kg	0.2%	
Udder Health	0.2	Reproduction	0.5
SCC	0.1	Fertility (Cows)	0.8
Mastitis	0.3	Fertility (Heifers)	1.0
Longevity	0.3	Calving Ease	95
Temperament	115	Milking Speed	110
Type		120	
Format	99	Feet & Legs	120
Muscling	96	Udder	123
Teats	102	Beef	96

- Daughter Proven Production Sire
- Frames Perfectly Balanced
- Excellent Feet & Legs

Montbeliarde

Montbeliarde

MO5638

DoveaGENETICS

DAUGHTER PROVEN

NEUTRINO

MO : 100%

International ID
MONFRAM003803364134 aAa: 513

PED



Idee, Dam of Neutrino (MO5638)



Daughter of Neutrino (MO5638)



Strength



Robot
Milking



Sexed
Semen
Available

Jilbeer X Fadil

Daughter 305 Day Milk Records

Parity	Dtrs	Milk Kg	Fat Kg	Prot Kg	Solids Kg	Fat %	Prot %
1	1368	8781	396	334	730	4.51	3.80

ISU: 158	(Rel: 95%)	France Dec. 2023	
Daughters		1368	
INEL		81	
Milk		861	
Fat	70kg	0.47%	
Protein	62kg	0.45%	
Udder Health	-0.3	Reproduction	-0.2
SCC	-0.3	Fertility (Cows)	-0.2
Mastitis	-0.2	Fertility (Heifers)	-0.6
Longevity	-0.3	Calving Ease	95
Temperament	103	Milking Speed	103
Type		111	
Format	103	Feet & Legs	113
Muscling	108	Udder	105
Teats	94	Beef	108

- Daughter Proven Component Specialist
- +0.45% Protein & +0.47% Fat
- Daughters (1368) Average 8781 Kg Milk, 4.51% Fat & 3.80% Protein
- Low Stature & Strength

Montbeliarde

Montbeliarde

MO8844

PAVEL

MO : 100%

International ID
MONFRAM007402852739 aAa: 243

PED



Narcisse, Dam of Pavel (MO8844)



Narcisse, Dam of Pavel (MO8844)

Neutrino X Ingenio

Dam: 305 Day Milk Records

Lact	Milk Kg	Fat Kg	Prot. Kg	Solids Kg	Fat %	Protein %
3rd lact	12124	506	446	952	4.17	3.68



Robot Milking



Health Improver



Easy Calving

ISU: 171		(Rel: 77%) France Dec. 2023	
Daughters		0	
INEL		73	
Milk		1013	
Fat	66kg	0.37%	
Protein	56kg	0.32%	
Udder Health	1.0	Reproduction	0.0
SCC	+1.1	Fertility (Cows)	+0.4
Mastitis	+0.6	Fertility (Heifers)	-0.1
Longevity	0.6	Calving Ease	95
Temperament	108	Milking Speed	101
Type		119	
Format	102	Feet & Legs	112
Muscling	107	Udder	122
Teats	110	Beef	107

- Neutrino Son with 1013kg Milk
- Udder Improver 122
- +122 Kg of Solids

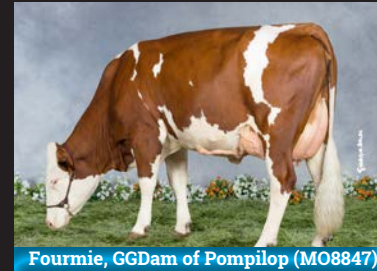
MO8847

POMPILOP

MO : 100%

International ID
MONFRAM002539746173 aAa: 246

PED



Fourmie, GGdam of Pompilop (MO8847)



Orange, Dam of Pompilop (MO8847)

Naruto X Lonestar

Dam: 305 Day Milk Records

Lact	Milk Kg	Fat Kg	Prot. Kg	Solids Kg	Fat %	Protein %
2nd lact	8975	431	357	788	4.80	3.98



ISU: 154	(Rel: 76%)	France Dec. 2023	
Daughters		0	
INEL		53	
Milk		794	
Fat	42kg	0.19%	
Protein	42kg	0.26%	
Udder Health	0.8	Reproduction	-0.2
SCC	+0.8	Fertility (Cows)	+0.9
Mastitis	+0.7	Fertility (Heifers)	+0.4
Longevity	1.2	Calving Ease	95
Temperament	106	Milking Speed	107
Type		121	
Format	99	Feet & Legs	118
Muscling	96	Udder	126
Teats	98	Beef	96

- Dam Producing 4% Protein & 4.8% Fat
- High Components
- Udder Specialist 126

MO7788

PUNTO

MO : 100%

International ID
MONFRAM003564460732 aAa: 651

PED



Papouille, Half Sister of Punto (MO7788)



Nivea, Dam of Punto (MO7788)

Milton X Jasmino

Dam: 305 Day Milk Records

Lact	Milk Kg	Fat Kg	Prot. Kg	Solids Kg	Fat %	Protein %
4th lact	9425	385	333	718	4.09	3.53



Robot Milking



Easy Calving



Sexed Semen Available

ISU: 172		(Rel: 77%)	France Dec. 2023
Daughters		0	
INEL		50	
Milk		643	
Fat		56kg	0.45%
Protein		35kg	0.22%
Udder Health	1.6	Reproduction	1.3
SCC	+1.7	Fertility (Cows)	+1.7
Mastitis	+1.1	Fertility (Heifers)	+1.5
Longevity	1.9	Calving Ease	95
Temperament	110	Milking Speed	100
Type		117	
Format	89	Feet & Legs	121
Muscling	87	Udder	128
Teats	107	Beef	87

- Volume with Percentages
- Excellent Udder and Feet & Legs
- High Component Dam

MO9163

DAUGHTER PROVEN

MO: 100%

MONDUCIEL

International ID
MONFRAM002545109367 aAa: 546



Daughter of Monduciel (MO9163)

PED



Itachi JB X Uclair

Daughter 305 Day Milk Records

Parity	Dtrs	Milk Kg	Fat Kg	Prot Kg	Solids Kg	Fat %	Prot %
1	480	8438	376	316	692	4.46	3.74

ISU: 140 (Rel: 95%) France Dec. 2023

Daughters 480

INEL 46

Milk 178

Fat 39kg 0.45%

Protein 33kg 0.40%

Udder Health 0.4 Reproduction -0.4

SCC +0.3 Fertility (Cows) -1.0

Mastitis +0.5 Fertility (Heifers) +0.4

Longevity 0.3 Calving Ease 95

Temperament 120 Milking Speed 104

Type		109	
Format	96	F & L	109
Muscling	101	Udder	113
Teats	105	Beef	101

- Great New Proven Bull with Top Solids
- Daughters (480) Avg. 8348 Kg, 4.46% Fat & 3.74% Protein

MO6505

DAUGHTER PROVEN

MO: 100%

OTOLIB

International ID
MONFRAM006868690819 aAa: 615



Dam of Otolib (MO6505)

PED



Manitoba X Harper

Dam: 305 Day Milk Records

Lact	Milk Kg	Fat Kg	Prot. Kg	Solids Kg	Fat %	Protein %
3rd lact	12795	576	502	1078	4.50	3.92

ISU: 159 (Rel: 76%) France Dec. 2023

Daughters 3

INEL 32

Milk 116

Fat 57kg 0.78%

Protein 15kg 0.19%

Udder Health 1.1 Reproduction 1.5

SCC +1.1 Fertility (Cows) +1.2

Mastitis +1.1 Fertility (Heifers) +0.9

Longevity 0.9 Calving Ease 95

Temperament 109 Milking Speed 111

Type		120	
Format	98	F & L	117
Muscling	104	Udder	124
Teats	108	Beef	104

- Low Stature Grazing Cows
- Extreme Fat % +0.78

Montbeliarde

Montbeliarde

AY7053

DAUGHTER PROVEN

AY: 100%

VISSERDALE SURANO-ET

International ID
RDCCANM000012211591 aAa: 465

GENEX



Visserdale Selena EX90, Dam of Surano

PEM



Valpas X Rockstar

Dam 305 Day Milk Records

Lact	Milk Kg	Fat Kg	Prot. Kg	Solids Kg	Fat %	Protein %
Avg. of 3	9540	433	334	767	4.54	3.50

NMS: 679 USA Dec. 2023

Milk	TPI: 546	
Milk lb	+1310	
Fat lb	+72kg	+0.09%
Protein lb	+59kg	+0.08%
Daughters	6	

Health

Productive Life	+2.9	Daughter Preg Rate	-0.8
Livability	+0.5	Cow Conception	+0.0
SCC	+3.02	Heifer Conception	+1.9

Type Traits

Stature	-0.4	F & L	0.1
PTA Type	-0.2	Udder	-0.37

- Superb Milk & Components
- Low Stature

MSX116

DAUGHTER PROVEN

RD: 34.38%
SH: 65.63%

KUNDES GOLDEN BADG FANTASY

International ID
MSHUSAM000068314754 aAa: 243

GENEX



Pine-Valley Badger Zelda 2E-EX92, Paternal Sister

PEM

Badger X Frost Kourt

NMS: -179 USA Dec. 2023

Milk	TPI: -46	
Milk lb	-712	
Fat lb	-11kg	+0.09%
Protein lb	-12kg	+0.06%
Daughters	7	

Health

Productive Life	-1.4	Daughter Preg Rate	+0.4
Livability	-2.3	Cow Conception	+0.3
SCC	+3.08	Heifer Conception	+1.2

Type Traits

Stature	1.10	F & L	0.0
PTA Type	0.20	Udder	0.31

- Nice Udders
- High Components

Dairy Shorthorn

Ayrshire

MSX221

MS (50%)
HO (25%)
SH (19%)

 Dovea GENETICS

GENOMIC

BALLYTRAIN BRAVEHEART (RO)

International ID
MSHIRLM216090492041 aAa: 243

PEM

 Dovea GENETICS



Dam: Ballytrain Bloom 30 EX95

Jellybean X Golden Sand

Dam: Ballytrain Bloom 30 EX95 - 305 Day Milk Records

Lact	Milk Kg	Fat Kg	Prot. Kg	Solids Kg	Fat %	Protein %
Avg. of 6	9131	347	329	676	3.80	3.60

EBI Nov 23 Source ICBF			Rel.	EBI Nov 23 Source ICBF			Rel.
EBI	€44		52%	Calving	€1	43%	
Prod. SI	-€3		76%	Calv. Diff. Cow	3.53%	59%	
Milk Kg	-5		76%	Calv. Diff. Hfr	8.22%	49%	
Fat	4kg	+0.07%	76%	Gest. Len (Days)	-0.45	38%	
Protein	-2kg	-0.03%	76%	Health	€0	53%	
Fert. SI	€41		29%	Maint. SI	€26	39%	
Calv. Int	-2.18		30%	Mgmt. SI	€1	42%	
Survival %	1.08		28%	Milk Time (Secs)	-6.85	61%	
Beef	-€39		45%	Temperament	-0.04	27%	



Paternal Dam: Marleycote Princess Jill 31 EX95

- Dairy Shorthorn Grazing Sire
- Wide, Low Stature Dam - EX95 Udder
- Maternal Brother Proven with +366kg Milk, +0.12% Fat & +0.03% Protein

Dairy Shorthorn

Dairy Shorthorn

BS7563

DAUGHTER PROVEN

BS: 100%

SUPERBROWN SHELDON

International ID
BSWITAM022990224026 aAa: N/A



PED

AZ/A2

Superbrown Sheldon Daughter

Solaris X Juhus

ITE: 748 Rank: 95 Italy Dec. 2023

Milk	
Milk kg	+686
Fat kg	36kg 0.22%
Protein kg	30kg 0.17%
Daughters	116

Fitness

BCS	100	Milking Speed	88
Longevity	109	Calving Ease	126
SCC	118		

Type Traits: 109

Stature	109	F & L	117
Strength	123	Udder	107

- Delivers High Component Milk
- Good Udders & Health

BS7569

DAUGHTER PROVEN

BS: 100%

SUPERBROWN HARVEST

International ID
BSWITAM022990190036 aAa: 465



PED

Robot Milking

Superbrown Harvest Daughter

Huray X Poster

ITE: 814 Rank: 97 Italy Dec. 2023

Milk	
Milk kg	+483
Fat kg	23kg 0.16%
Protein kg	34kg 0.29%
Daughters	172

Fitness

BCS	86	Milking Speed	106
Longevity	107	Calving Ease	124
SCC	89		

Type Traits: 106

Stature	105	F & L	124
Strength	89	Udder	108

- Protein % Improver
- Improves Feet & Legs

Brown Swiss

Brown Swiss

GENOMIC

MY: 100%

DE VINKENHOF RELANO

International ID
MRYNLDM000613309774 aAa: 531



Dam: De Vinkenhof Daniëlle 189 VG 89

PED



NEW

Rudo X Mustang

Dam: De Vinkenhof Daniëlle 189 VG 89 - Milk Records

Lact	Milk Kg	Fat Kg	Prot. Kg	Solids Kg	Fat %	Protein %
Avg. of 2	8371	395	326	721	4.72	3.90

EBI Nov 23 Source ICBF			Rel.	EBI Nov 23 Source ICBF			Rel.
EBI	€131	22%	Calving	€29	20%		
Prod. SI	€11	29%	Calv. Diff. Cow	3.25%	29%		
Milk Kg	-91	29%	Calv. Diff. Hfr	8.91%	14%		
Fat	-2kg	+0.04%	Gest. Len (Days)	-3.72	18%		
Protein	1kg	+0.09%	Health	€9	19%		
Fert. SI	€52	20%	Maint. SI	€10	13%		
Calv. Int	-3.58	23%	Mgmt. SI	-€11	15%		
Survival %	0.54	12%	Milk Time (Secs)	0.55	21%		
Beef	€21	14%	Temperament	-0.29	11%		

- High Protein 'Daniëlle' MRI Maternal Line
- GDam Produced 79,000Kg at 5.23% Fat & 4.04% Protein

MY7527

DAUGHTER PROVEN

MY: 100%

BERIO DN

International ID
MRYDEUM000121676456 aAa: N/A



Berio DN Daughter

PED



Berus X Dorus

Dam: Jerita VG 88 - 305 Day Milk Records

Lact	Milk Kg	Fat Kg	Prot. Kg	Solids Kg	Fat %	Protein %
Avg. of 9	9009	427	366	793	4.74	4.06

RZG: 113 (Rel: 74%)		Germany Dec. 2023	
Milk			
Milk kg		-259	
Fat kg		+23kg	+0.49%
Protein kg		+8kg	+0.25%
Daughters		35	
Type Traits			
D Type	83	Feet & Legs	109
Body	82	Udder	104
		Muscling	83

- Daughter Proven Components
- VG89 Dam Averaged 9,009 Kg & 4.06% Protein

MRI / Rotbunt

MRI / Rotbunt

MY7524

DAUGHTER PROVEN

MY: 100%

REGUS DN

International ID
MRYDEUM000121285572 aAa: N/A



Regus DN Daughter



Remco X Swingfox

Dam: Lachmoewe VG 85 - 305 Day Milk Records

Lact	Milk Kg	Fat Kg	Prot. Kg	Solids Kg	Fat %	Protein %
Lact Avg.	11270	456	403	859	4.05	3.58

RZG: 110 (Rel: 73%) Germany Dec. 2023

Milk			
Milk kg	+145		
Fat kg	+19kg	+0.17%	
Protein kg	+14kg	+0.12%	
Daughters	21		

Type Traits

D Type	98	Feet & Legs	96		
Body	100	Udder	102	Muscling	96

- Dual Purpose with Milk (+145kg)
- Great Production on Dam

MY7552

DAUGHTER PROVEN

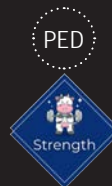
MY: 100%

OLPE DN

International ID
MRYDEUM000120819984 aAa: N/A



Olpe DN Daughter



Oskur X Matthijs

Dam: Karlsberg VG 85 - 305 Day Milk Records

Lact	Milk Kg	Fat Kg	Prot. Kg	Solids Kg	Fat %	Protein %
Avg. of 5	7712	332	307	639	4.30	3.98

RZG: 107 (Rel: 87%) Germany Dec. 2023

Milk			
Milk kg	-305		
Fat kg	+4kg	+0.25%	
Protein kg	-4kg	+0.11%	
Daughters	168		

Type Traits

D Type	101	Feet & Legs	102		
Body	101	Udder	100	Muscling	99

- Dual Purpose & Moderate Milk
- 3.98% Protein Dam
- Nice Udders & Longer Teats

HO 46.88%
 JE 34.5%
 FR 18.75%



GENOMIC

CASTLEROCK SAINT JOHN SRM

International ID
 HOLIRLM213237412174 aAa: 156

SRM



C. Hayden-Millerick, Fethard, Co. Tipperary

Dam of Castlerock Saint John

FR7749 X PKA X SPD

Dam 305 Day Milk Records

Lact	Milk Kg	Fat Kg	Prot. Kg	Solids Kg	Fat %	Protein %
Avg. of 5	4636	292	207	499	6.23	4.48



EBI Nov 23	Source	ICBF	Rel.	0	Percentile	50	100
EBI	€323		54%	[Bar chart]			
Production	€113		74%	[Bar chart]			
Fertility	€123		31%	[Bar chart]			
Carbon	€20		53%	[Bar chart]			
Calving	€52		58%	[Bar chart]			
Beef	-€28		44%	[Bar chart]			
Maintenance	€24		44%	[Bar chart]			
Management	€2		50%	[Bar chart]			
Health	€17		62%	[Bar chart]			

Production					
Milk Kg	Fat Kg	Protein Kg	Solids Kg	Fat %	Protein %
-189	20	9	29	0.50	0.28

Calving					
Gestation		Dairy Cow		Dairy Heifer	
-4.54	(61% Rel.)	1.97	(64% Rel.)	4.67	(59% Rel.)

Fertility	
Calving Interval	Survival
-6.75	3.08%

- **+0.50% Fat & +0.28% Protein**
- **Dam Averages 500kg Milk Solids on Once a Day Milking**
- **6.23% Fat & 4.48% Protein**
- **Dam's SCC 53,000 over 6 Lactations**
- **Sexed Semen Available April '24**

Cross Bred

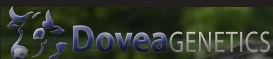
Cross Bred

FRX131

GENOMIC

RENNY OAKWOOD

International ID
HOLIRLM212584357174 aAa: 234



K & M Twomey, Ballyhooly, Co. Cork

Dam of Renny Oakwood

HO (68.75%)
FR (18.75%)
JE (12.5%)

XS*



JE4764

DAUGHTER PROVEN

NEXTGEN HITMAN

International ID
JERIRLM2226044611566 aAa: 156



Teagasc, Moorepark, Co. Cork

Dam, Nextgen Hillstar Penny

PED



FR4582 X FR4154 X ZCD

Dam 305 Day Milk Records

Lact	Milk Kg	Fat Kg	Prot. Kg	Solids Kg	Fat %	Protein %
1 lact.	4727	175	197	372	3.71	4.17

EBI Nov 23 Source ICBF			Rel.	EBI Nov 23 Source ICBF			Rel.
EBI		€290	64%	Calving		€56	89%
Prod. SI		€106	79%	Calv. Diff. Cow		2.15%	90%
Milk Kg		22	79%	Calv. Diff. Hfr		5.73%	75%
Fat	21kg	+0.34%	79%	Gest. Len (Days)		-4.74	96%
Protein	11kg	+0.18%	79%	Health		€3	67%
Fert. SI		€123	40%	Maint. SI		€4	49%
Calv. Int		-6.73	41%	Mgmt. SI		€8	55%
Survival %		3.11	36%	Milk Time (Secs)		-17.86	81%
Beef		-€10	64%	Temperament		0.06	35%

- XBred with Positive Milk Kg
- +32 Kg of Milk Solids

ZCD X HJT X HIJ

Daughter 305 Day Milk Records

Parity	Dtrs	Milk Kg	Fat Kg	Prot Kg	Solids Kg	Fat %	Prot %
1	127	4654	229	181	410	4.92	3.89
2	52	5561	268	217	485	4.82	3.9

EBI Nov 23 Source ICBF			Rel.	EBI Nov 23 Source ICBF			Rel.
EBI		€217	83%	Calving		€53	92%
Prod. SI		€110	96%	Calv. Diff. Cow		1.48%	92%
Milk Kg		-208	96%	Calv. Diff. Hfr		2.70%	86%
Fat	15kg	+0.43%	96%	Gest. Len (Days)		-4.02	98%
Protein	10kg	+0.31%	96%	Health		€5	79%
Fert. SI		€44	66%	Maint. SI		€50	72%
Calv. Int		-1.60	67%	Mgmt. SI		€5	73%
Survival %		1.89	65%	Milk Time (Secs)		0.29	91%
Beef		-€77	82%	Temperament		0.15	58%

- Proven Jersey Sire
- 2nd Lac. Daughters Avg. 5561Kg at 4.82% Fat & 3.9% Prot.

NEXTGEN BANNIFF

International ID
 JERIRLM226044633242 aAa: 516

PED



Teagasc, Moorepark, Co. Cork

Dam of Nextgen Banniff

JE8085 X F377

Dam 305 Day Milk Records

Lact	Milk Kg	Fat Kg	Prot. Kg	Solids Kg	Fat %	Protein %
Avg. of 1	4425	235	191	426	5.30	4.31

GDam 305 Day Milk Records

Lact	Milk Kg	Fat Kg	Prot. Kg	Solids Kg	Fat %	Protein %
4th Lact.	7864	465	325	790	5.91	4.13
Avg. of 4	5543	324	254	578	5.91	4.37



EBI Nov 23	Source ICBF	Rel.	0	Percentile 50	100
EBI	€260	57%	[Bar chart showing percentile distribution]		
Production	€110	76%	[Bar chart showing percentile distribution]		
Fertility	€68	37%	[Bar chart showing percentile distribution]		
Carbon	€26	56%	[Bar chart showing percentile distribution]		
Calving	€49	56%	[Bar chart showing percentile distribution]		
Beef	-€65	43%	[Bar chart showing percentile distribution]		
Maintenance	€39	45%	[Bar chart showing percentile distribution]		
Management	€13	61%	[Bar chart showing percentile distribution]		
Health	€21	66%	[Bar chart showing percentile distribution]		

Production					
Milk Kg	Fat Kg	Protein Kg	Solids Kg	Fat %	Protein %
-389	19	6	25	0.64	0.36
Calving					
Gestation		Dairy Cow		Dairy Heifer	
-4.03	(60% Rel.)	1.99	(59% Rel.)	4.16	(58% Rel.)
Fertility					
Calving Interval			Survival		
-3.30			2.12%		

- Lifts Daughter Components by 1% (+0.64% Fat +0.36% Prot.)
- 2 X Generations 10% Solids
- Higher Milk for Pure Jersey -389Kg Milk
- New Zealand Pedigree



DoveaGENETICS

Thurles, Co. Tipperary, Ireland, E41FH28

www.doveagenetics.ie



+353 (0) 504 21755



info@doveagenetics.ie