



Dovea GENETICS

DAIRY *BEEF*

DIRECTORY
2025



CONTENTS

Bull Code	Bull Name	Page Number
Belgian Blue		
BB4438	An De Beuffaux ♂	1
BB5325	Haubert Du Fond De Bois	2
BB8226	Rathlyon Olaf ET	3
BB9786	Wonderful Du Bois Remont	4
BB4607	Alinea De Fooz	4
BB8019	Negrta Du Lac	5
BB9795	Fuchsia Des Peupliers	6
BB9789	Hausse De Jauvelan	6
BB4611	Sommeil Des 3 Frontieres	7

Angus		
AA9775	Fellfort V Rodger 1584 ♂	8
AA5217	Kilmacanann Philip	8
AA4743	Kealkil Prime Lad ♂	9
AA9625	Rathfort U0129	10
AA7188	Kealkil Stockman ♂	10
AA1506	<small>NEW</small> Carrowboy Vegas 2	11
AA1964	<small>NEW</small> Fellfort W Rex 1684	12
AA1943	<small>NEW</small> Fellfort W Robo 1637	13
AA8938	Liss Bruno Y120	14
AA8172	Drumcrow Tribesman ♂	14
AA9843	<small>NEW</small> Ryans Victorious	15
AA9619	Kingsbury Red Victor	16
AA9628	Hawkley Red Zamari Y132	16

Hereford		
HE8935	Ringfort 1 Carlos	17
HE7545	Skehanore Fruitful	18
HE1503	<small>NEW</small> Crownstown Hanley ♂	19
HE8547	Chestnutpoll 1 Star 45	20
HE7548	Corlismore Cormac 076	21

Charolais		
CH4160	Pottlereagh Mark	22
CH6292	Knockmahon Opel	22
CH8541	Cattanview Supreme	23

Bull Code	Bull Name	Page Number
Limousin		
LM9577	Drumline S 1185	24
LM8929	Sliabh Felim Sterling	25
LM5443	Brooklands Marco	26
LM1946	<small>NEW</small> Gaggin Timely	26
LM7716	Brooklands Rowan	27
LM9948	<small>NEW</small> Caveldands Timbo	27

Aubrac		
AU8953	Deerpark Rowe ♂	28
AU6286	Johnstown Nelson 1039	28

Speckle Park		
SP1299	<small>NEW</small> Rockview Klassy	29
SP7347	Kilbarry Harper	29

Dovea Genetics Triple Range Technology		30
Spermvital Range		31
Sexed Male Beef Semen Range		32

Symbols Legend



Easy Calving
Identifies Easy Calving Sires



Beef Value
High Carcass Genetic Potential



PP Polled
100% of Progeny will be Polled



Pp Polled
50% of Progeny will be Polled



Proven
High Reliability Sire



Short Gestation
Shorter than Average Gestation



**Sexed Male
Semen Available**



BREED HIGH CBV, QUALITY CALVES WITH IRELAND'S NUMBER 1 BEEF SIRES



At Dovea Genetics we place quality to the fore when selecting our Beef Sires which is why Dovea progeny are unrivalled in sales rings & factory killout reports

Angus Leaders

Code	Name	DBI	Beef SI	Dairy Cow C.D.
AA1506	Carrowboy Vegas 2	€159	€123	2.6%
AA1964	Fellfort W Rex	€181	€118	2.5%
AA1943	Fellfort W Robo	€194	€118	1.8%
AA8938	Liss Bruno Y120	€150	€112	2.5%
AA9843	Ryans Victorious	€121	€110	3.5%

Hereford Leaders

Code	Name	DBI	Beef SI	Dairy Cow C.D.
HE8547	Chestnutpoll 1 Star	€110	€116	4.1%
HE1503	Crownstown Hanley	€108	€104	3.9%
HE8935	Ringfort 1 Carlos	€120	€99	3.9%
HE7374	Timolinpoll 1 Hercules	€35	€88	5.8%
HE7545	Skehanore Fruitful	€112	€78	3.3%

Limousin Leaders

Code	Name	DBI	Beef SI	Dairy Cow C.D.
LM9577	Drumline S 1185	€184	€209	4.8%
LM1946	Gaggin Timely	€173	€193	4.2%
LM5443	Brooklands Marco	€160	€186	5.0%
LM9948	Cavelands Timbo	€163	€185	3.8%
LM8929	Sliabh Felim Sterling	€170	€177	3.9%

Blue Leaders

Code	Name	DBI	Beef SI	Dairy Cow C.D.
BB9786	Wonderful D.B.Remont	€112	€199	8.0%
BB9795	Fuchsia Des Peupliers	€54	€186	9.1%
BB8226	Rathlyon Olaf ET	€127	€179	6.4%
BB9789	Hausse De Jauvelan	€73	€179	8.9%
BB4607	Alinea De Fooz	€41	€173	9.4%

Charolais Leaders

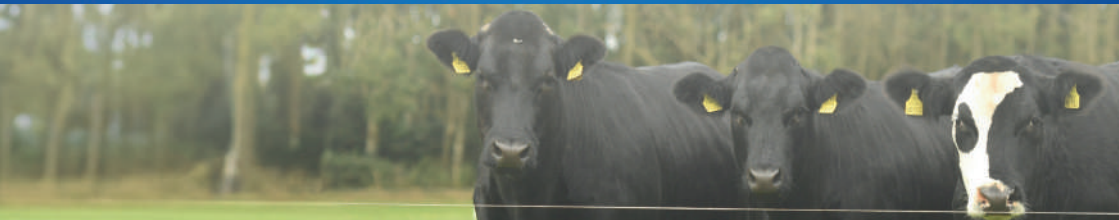
Code	Name	DBI	Beef SI	Dairy Cow C.D.
CH8541	Cattanview Supreme	€97	€210	7.0%
CH4160	Pottlereagh Mark	€89	€171	6.3%
CH6292	Knockmahon Opel	€132	€159	5.4%

Aubrac Leaders

Code	Name	DBI	Beef SI	Dairy Cow C.D.
AU8953	Deerpark Rowe	€187	€158	2.9%
AU6286	Johnstown Nelson	€110	€146	5.2%

Dovea Genetics is Home to Ireland's Number 1 Dairy Beef Sires!

- Number 1 Dairy Beef Index Sire in Ireland - Fellfort W Robo 1637 (AA1943)
- Number 1 Dairy Beef Index Limousin Sire on the Active Bull List - Drumline S 1185 (LM9577)
- Number 1 Dairy Beef Index Proven Limousin Sire on the Active Bull List - Sliabh Felim Sterling (LM8929)
- Number 1 Dairy Beef Index Angus Sire in Ireland - Fellfort W Robo 1637 (AA1943)
- Number 1 Easiest Calving Angus Sire in Ireland - Fellfort V Rodger 1584 (AA9775)
- Number 1 Easiest Calving Proven Angus Sire on the Active Bull List - Kealkil Stockman (AA5217)
- Number 1 Beef Sub Index Proven Hereford Sire on the Active Bull List - Chestnutpoll 1 Star 45 (HE8547)
- Number 1 Dairy Beef Index Proven Aubrac Sire on the Active Bull List - Deerpark Rowe (AU8953)
- Number 1 Most Proven Belgian Blue Sire on the Active Bull List - An De Beauffaux (BB4438)
- Number 1 Beef Sub Index Proven Charolais Sire on the Active Bull List - Cattanview Supreme (CH8541)
- Number 1 Calving Sub Index Proven Charolais Sire on the Active Bull List - Knockmahon Opel (CH6292)



AN DE BEAUFAUX

BB4438

BBLBELM000556713602

31-DEC-2015

Available in
spermital

SEMEN WITH
DOUBLE LIFESPAN



**Sexed Male
Semen**



- **Elite Proven Belgian Blue Sire**
- **Calves are Easily Born with Size, Length and Muscle**
- **Red Gene Carrier**
- **Sexed Male Semen Available**

Dairy Beef Index			ICBF Nov 24	
Within Breed	Trait	Value	Rel.	Across Breed
★ ★	Dairy Beef Index	€46	92%	★
★	Beef Sub-Index	€169	89%	★ ★ ★ ★ ★
★ ★ ★	Calving Sub-Index	-€112	96%	★
	Dairy Cow Calv. Diff.	8.7%	99%	
	Dairy Hfr Calv. Diff.	18.9%	75%	
★ ★ ★ ★	Gestation Length (Days)	0.59	99%	★ ★ ★ ★ ★
★	Carcass Weight (Kg)	29.70	99%	★ ★ ★ ★ ★
★ ★	Carcass Conformation	2.67	99%	★ ★ ★ ★ ★
★	Age at Finish (Days)	10.32	99%	★



DAIRY PROGENY SLAUGHTER RECORDS

No. of Progeny in Proof	Average Days to Slaughter	Carcass Weight	Conformation
3116	749	352kg	R
	Herd mates: 742	344kg	R-

Belgian Blue

Belgian Blue



- **Extremely Short Gestation Sire at 281 Days**
- **Massive Beef Sub Index €191**
- **Average Calving Difficulty**
- **Exceptional Calf Quality from Holstein Dams**



Dairy Beef Index		ICBF Nov 24		
Within Breed	Trait	Value	Rel.	Across Breed
★ ★ ★	Dairy Beef Index	€68	74%	★ ★
★ ★	Beef Sub-Index	€191	74%	★ ★ ★ ★ ★
★ ★ ★	Calving Sub-Index	-€115	72%	★
	Dairy Cow Calv. Diff.	9.0%	73%	
	Dairy Hfr Calv. Diff.	19.5%	39%	
★ ★ ★ ★ ★	Gestation Length (Days)	-0.02	83%	★ ★ ★ ★ ★
★ ★	Carcass Weight (Kg)	32.00	87%	★ ★ ★ ★ ★
★ ★ ★	Carcass Conformation	2.82	84%	★ ★ ★ ★ ★
★ ★ ★ ★	Age at Finish (Days)	2.11	77%	★



DAIRY PROGENY SLAUGHTER RECORDS

No. of Progeny in Proof	Average Days to Slaughter	Carcass Weight	Conformation
52	789	338kg	R-
	Herd mates: 763	344kg	R-

RATHLYON OLAF ET

BB8226

BBLIRLM214808470387

15-SEP-2020

Available in
spermvital

SEMEN WITH
DOUBLE LIFESPAN



- **Proven Easy Calving Specialist**
- **6.4% C.D. on Dairy Cows**
- **Short Gestation 282 Days**
- **Super Blue & White Calves That Develop Well**



Dairy Beef Index		ICBF Nov 24		
Within Breed	Trait	Value	Rel.	Across Breed
★★★★★	Dairy Beef Index	€127	57%	★★★★★
★	Beef Sub-Index	€179	52%	★★★★★
★★★★★	Calving Sub-Index	-€41	65%	★★
	Dairy Cow Calv. Diff.	6.4%	70%	
	Dairy Hfr Calv. Diff.	13.9%	38%	
★★★★★	Gestation Length (Days)	0.14	69%	★★★★★
★★	Carcass Weight (Kg)	31.10	57%	★★★★★
★	Carcass Conformation	2.57	47%	★★★★★
★	Age at Finish (Days)	9.09	64%	★



Belgian Blue

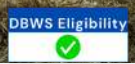
Belgian Blue

Test Site

BB9786

WONDERFUL DU BOIS REMONT

BBLBELM000367060324



- Wonderful Is a New Recruit to Dovea's Ever Growing Dairy Beef Stud
- Heavily Muscled White Bull with an Easy Calving Pedigree
- First Calves Due Spring '25

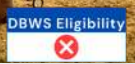
Dairy Beef Index		ICBF Nov 24		
Within Breed	Trait	Value	Rel.	Across Breed
★★★	Dairy Beef Index	€112	36%	★★★
★★★	Beef Sub-Index	€199	35%	★★★
★★★	Calving Sub-Index	-€80	37%	★
★★★	Dairy Cow Calv. Diff.	8.0%	41%	
★★★	Dairy Hfr Calv. Diff.	17.6%	35%	
★★★	Gestation Length (Days)	-0.55	33%	★★★
★★★	Carcass Weight (Kg)	35.90	33%	★★★
★★★	Carcass Conformation	2.66	33%	★★★
★★★	Age at Finish (Days)	1.93	55%	★

Belgian Blue

BB4607

ALINEA DE FOOZ

BBLBELM000152636531



- Extremely Easy Calving Proven Belgian Blue Sire
- Excellent Calves with Super Muscle and Style
- Alinea is the Ideal Choice for Smaller Type Dairy Cows to Produce High CBV Calves

Dairy Beef Index		ICBF Nov 24		
Within Breed	Trait	Value	Rel.	Across Breed
★★	Dairy Beef Index	€41	86%	★
★	Beef Sub-Index	€173	84%	★★★
★★	Calving Sub-Index	-€126	89%	★
	Dairy Cow Calv. Diff.	9.4%	95%	
	Dairy Hfr Calv. Diff.	20.5%	42%	
★★★	Gestation Length (Days)	-0.75	98%	★★★
★★	Carcass Weight (Kg)	27.50	98%	★★★
★	Carcass Conformation	2.59	98%	★★★
★★	Age at Finish (Days)	4.96	94%	★

Belgian Blue

NEGRITA DU LAC

BB8019

BBLBELM000861597840

22-JUN-2020

Available in
spermital
SEMEN WITH
DOUBLE LIFESPAN



- **Easy Calving Red & White Belgian Blue Sire Suitable for Dairy Cows**
- **8.0% C.D on Dairy Cows**
- **Exceptional Calf Quality**
- **Ideal Choice for Dairy Cows Carrying the Red Gene to Produce High Value Calves**

DBWS Eligibility



Negrita sired heifer calves out of Montbeliarde dams sold to highs of €850 in Carrigallen mart

Dairy Beef Index		ICBF Nov 24		
Within Breed	Trait	Value	Rel.	Across Breed
★★★	Dairy Beef Index	€65	77%	★
★	Beef Sub-Index	€167	71%	★★★★★
★★★★	Calving Sub-Index	-€92	86%	★
	Dairy Cow Calv. Diff.	8.0%	89%	
	Dairy Hfr Calv. Diff.	16.2%	38%	
★	Gestation Length (Days)	1.90	98%	★★★★★
★	Carcass Weight (Kg)	25.60	82%	★★★★★
★★	Carcass Conformation	2.63	76%	★★★★★
★★	Age at Finish (Days)	5.59	75%	★

DAIRY PROGENY SLAUGHTER RECORDS

No. of Progeny in Proof	Average Days to Slaughter	Carcass Weight	Conformation
27	488	396kg	U
	Herd mates: 506	402kg	U-



Belgian Blue

Belgian Blue

BB9795**FUCHSIA DES PEUPLIERS****BBLBELM000564918362**

- **New Massive Beef Sub Index White Belgian Blue Sire**
- **Long, Modern Type Bull with Easy Calving Pedigree**
- **Fuchsia Is the Perfect Choice to Produce High CBV Calves**

Belgian Blue

Dairy Beef Index		ICBF Nov 24		
Within Breed	Trait	Value	Rel.	Across Breed
★★	Dairy Beef Index	€54	40%	★
★★	Beef Sub-Index	€186	38%	★★★★ ★★
★★★	Calving Sub-Index	-€123	44%	★
	Dairy Cow Calv. Diff.	9.1%	48%	
	Dairy Hfr Calv. Diff.	19.9%	36%	
★★★ ★	Gestation Length (Days)	0.19	42%	★★★★ ★★
★★	Carcass Weight (Kg)	32.90	38%	★★★★ ★★
★★	Carcass Conformation	2.71	37%	★★★★ ★★
★★★	Age at Finish (Days)	3.93	55%	★

BB9789**HAUSSE DE JAUVELAN****BBLBELM000462574057**

- **White Belgian Blue Sire Purchased for our Dairy Beef Programme**
- **Hausse Combines Three Generations of Easy Calving Pedigree**
- **Massive Beef Sub Index of €179**
- **Use to Produce High CBV Calves**

Belgian Blue

Dairy Beef Index		ICBF Nov 24		
Within Breed	Trait	Value	Rel.	Across Breed
★★★	Dairy Beef Index	€73	35%	★★
★	Beef Sub-Index	€179	33%	★★★★ ★★
★★★ ★	Calving Sub-Index	-€99	37%	★
	Dairy Cow Calv. Diff.	8.9%	43%	
	Dairy Hfr Calv. Diff.	17.4%	36%	
★★★ ★	Gestation Length (Days)	-0.20	31%	★★★★ ★★
★★	Carcass Weight (Kg)	31.40	31%	★★★★ ★★
★	Carcass Conformation	2.54	31%	★★★★ ★★
★★★	Age at Finish (Days)	4.21	54%	★

SOMMEIL DES 3 FRONTIERES

BB4611

BBLBELM000157934828

20-NOV-2014



- Well Proven, Easy Calving, Short Gestation Belgian Blue Sire
- 282 Day Gestation Length
- Excellent Quality Calves Without Compromising on Calving Difficulty



Dairy Beef Index			ICBF Nov 24	
Within Breed	Trait	Value	Rel.	Across Breed
★	Dairy Beef Index	€4	88%	★
★	Beef Sub-Index	€154	85%	★★★★★
★★	Calving Sub-Index	-€147	91%	★
	Dairy Cow Calv. Diff.	10.1%	98%	
	Dairy Hfr Calv. Diff.	22.8%	46%	
★★★★★	Gestation Length (Days)	-2.06	99%	★★★★★
★	Carcass Weight (Kg)	20.90	99%	★★★★★
★	Carcass Conformation	2.55	99%	★★★★★
★	Age at Finish (Days)	6.43	97%	★



DAIRY PROGENY SLAUGHTER RECORDS

No. of Progeny in Proof	Average Days to Slaughter	Carcass Weight	Conformation
1270	799	345kg	R
	Herd mates: 780	339kg	R-

Belgian Blue

Belgian Blue

AA9775

FELLFORT V RODGER 1584

AA NIRLM215379481584

NEW

#1 Easiest Calving Angus



Sexed Male Semen

DBWS Eligibility

Available in spermvital



- Sky High DBI Angus Bull That Ticks all The Boxes
- Easy Calving Son of the Famous Prime Lad (AA4743)
- Trait Leader on Calving Traits, Gestation & Days to Slaughter
- Purchased in Association with The Irish Angus Producer Group

Dairy Beef Index		ICBF Nov 24		
Within Breed	Trait	Value	Rel.	Across Breed
★★★★ ★★	Dairy Beef Index	€175	54%	★★★★ ★★
★★★★	Beef Sub-Index	€107	50%	★★
★★★★ ★★	Calving Sub-Index	€59	61%	★★★★ ★★
	Dairy Cow Calv. Diff.	1.8%	61%	
	Dairy Hfr Calv. Diff.	4.9%	61%	
★★★★ ★★	Gestation Length (Days)	-2.45	61%	★★★★ ★★
★★★★	Carcass Weight (Kg)	7.70	53%	★
★★★★ ★★	Carcass Conformation	0.85	46%	★
★★★★ ★★	Age at Finish (Days)	-18.18	68%	★★★★ ★★

Angus

AA5217

KILMACANANN PHILIP

AA NIRLM217921710294



Available in spermvital

DBWS Eligibility



- Proven Easy Calving Angus Sire
- 2.6% C.D On Dairy Cows
- 280 Day Gestation Length (Top 1% of All Breeds)
- Trait Leader on Days to Slaughter and Carbon Index
- Excellent Quality Early Maturing Calves

Dairy Beef Index		ICBF Nov 24		
Within Breed	Trait	Value	Rel.	Across Breed
★★★★ ★	Dairy Beef Index	€131	88%	★★★★ ★★
★	Beef Sub-Index	€77	83%	★
★★★★ ★★	Calving Sub-Index	€45	96%	★★★★ ★★
	Dairy Cow Calv. Diff.	2.6%	96%	
	Dairy Hfr Calv. Diff.	7.7%	86%	
★★★★ ★★	Gestation Length (Days)	-2.02	99%	★★★★ ★★
★	Carcass Weight (Kg)	1.40	95%	★
★★★★	Carcass Conformation	0.71	94%	★
★★★★ ★★	Age at Finish (Days)	-17.05	87%	★★★★ ★★

Angus

KEALKIL PRIME LAD

AA4743

AANIRLM141089640493

07-SEP-2017

Available in
spermvital
SEMEN WITH
DOUBLE LIFESPAN



**Sexed Male
Semen**



- Ireland's No.1 Proven Dairy Beef Sire Available
- Phenomenal Calving Ease, Gestation Length and Calf Quality in the One Package
- Almost 4000 Carcass Records Averaging 294 Kgs Dead Weight at an Average Grade of O+ at 30 Days Younger Than Breed Average



Dairy Beef Index		ICBF Nov 24		
Within Breed	Trait	Value	Rel.	Across Breed
★★★★★	Dairy Beef Index	€176	95%	★★★★★
★★★★	Beef Sub-Index	€100	92%	★
★★★★★	Calving Sub-Index	€64	99%	★★★★★
	Dairy Cow Calv. Diff.	2.1%	99%	
	Dairy Hfr Calv. Diff.	5.2%	99%	
★★★★★	Gestation Length (Days)	-3.4	99%	★★★★★
★	Carcass Weight (Kg)	2.10	99%	★
★★★★★	Carcass Conformation	0.94	99%	★
★★★★★	Age at Finish (Days)	-19.96	99%	★★★★★



DAIRY PROGENY SLAUGHTER RECORDS

No. of Progeny in Proof	Average Days to Slaughter	Carcass Weight	Conformation
3776	738	294kg	O+
	Breed Avg: 765	313kg	O+

Angus

Angus

AA9625

RATHFORT U0129

AA NIRLM216306390129



DBWS Eligibility

Available in **spermvital**



- Initial Reports Suggest U0129 To Be Very Easy Calving
- Superb Calf Quality Combined with Short Gestation
- Ideal Choice to Produce Quality Calves Without Impacting on Calving

Dairy Beef Index		ICBF Nov 24		
Within Breed	Trait	Value	Rel.	Across Breed
★★★ ★	Dairy Beef Index	€135	53%	★★★ ★★
★★	Beef Sub-Index	€80	50%	★
★★★ ★★	Calving Sub-Index	€50	57%	★★★ ★★
	Dairy Cow Calv. Diff.	2.2%	65%	
	Dairy Hfr Calv. Diff.	6.8%	64%	
★★★ ★★	Gestation Length (Days)	-1.91	46%	★★★ ★★
★★	Carcass Weight (Kg)	3.50	52%	★
★★★ ★	Carcass Conformation	0.84	46%	★
★★	Age at Finish (Days)	-9.48	68%	★★★ ★★

Angus

AA7188

KEALKIL STOCKMAN

AA NIRLM215107640529



Sexed Male Semen

DBWS Eligibility

Available in **spermvital**



- Easiest Calving Proven Angus Sire in Ireland
- Extreme Calving Ease on Dairy Heifers at 5.1% C.D
- Use Stockman on Smaller Type Heifers for Hassle Free Calving

Dairy Beef Index		ICBF Nov 24		
Within Breed	Trait	Value	Rel.	Across Breed
★★★ ★★	Dairy Beef Index	€141	85%	★★★ ★★
★	Beef Sub-Index	€77	78%	★
★★★ ★★	Calving Sub-Index	€56	97%	★★★ ★★
	Dairy Cow Calv. Diff.	1.9%	97%	
	Dairy Hfr Calv. Diff.	5.1%	91%	
★★★ ★★	Gestation Length (Days)	-2.19	99%	★★★ ★★
★	Carcass Weight (Kg)	0.50	90%	★
★★★	Carcass Conformation	0.75	88%	★
★★★	Age at Finish (Days)	-13.21	85%	★★★ ★★

Angus

CARROWBOY VEGAS 2

Best Sire
NEW

AA1506

AA NIRLM226549940046

06-SEP-2022



- Possibly the Most Impressive Angus Sire Ever Introduced to the Irish Market
- Extremely Square, Powerful, Correct Bull with Length, Bone, Style & Presence
- Extremely High Beef SI of €123 Combined with a Massive +18.3kg Carc. Weight
- Use Vegas on Dairy Cows to Produce Powerful Calves



Dairy Beef Index		ICBF Nov 24		
Within Breed	Trait	Value	Rel.	Across Breed
★★★★★	Dairy Beef Index	€159	45%	★★★★★
★★★★★	Beef Sub-Index	€123	43%	★★
★★★★	Calving Sub-Index	€34	47%	★★★★★
	Dairy Cow Calv. Diff.	2.6%	54%	
	Dairy Hfr Calv. Diff.	6.9%	53%	
★★★	Gestation Length (Days)	-0.56	37%	★★★★★
★★★★★	Carcass Weight (Kg)	18.30	46%	★★★
★★★★★	Carcass Conformation	0.82	37%	★
★★★	Age at Finish (Days)	-14.45	60%	★★★★★



Angus

Angus

FELLFORT W REX 1643

Test Sire
NEW

AA1964

AA NIRLM215379491643

03-AUG-2023



- Rex is Our New Superstar Angus Sire
- Son of The Famous Prime Lad (AA4743) With +13.5 Kgs Carcass Weight
- Sky High DBI of €181
- Trait Leader on Calving Index, Carcass Traits and Days to Slaughter
- Test Sire

DBWS Eligibility



Dairy Beef Index		ICBF Nov 24		
Within Breed	Trait	Value	Rel.	Across Breed
★★★★★	Dairy Beef Index	€181	52%	★★★★★
★★★★★	Beef Sub-Index	€118	47%	★★
★★★★★	Calving Sub-Index	€56	60%	★★★★★
	Dairy Cow Calv. Diff.	2.5%	61%	
	Dairy Hfr Calv. Diff.	6.7%	60%	
★★★★★	Gestation Length (Days)	-3.10	60%	★★★★★
★★★★★	Carcass Weight (Kg)	13.50	47%	★★
★★★★★	Carcass Conformation	0.88	46%	★
★★★★★	Age at Finish (Days)	-18.82	68%	★★★★★



Angus

Angus

Test Sire
NEW

AA1943

FELLFORT W ROBO 1637

AA NIRLM215379421637

30-JUL-2023



- Robo is The No.1 Angus Sire Available in Ireland on DBI with a Massive Index of €194
- Exceptionally Well-Balanced Index - Trait Leader on All Calving Indices
- Gestation Length, Carcass Conformation & Age Of Slaughter
- Son of The No.1 Proven Dairy Beef Sire Kealkil Prime Lad (AA4743)
- Test Sire



Dairy Beef Index			ICBF Nov 24		
Within Breed	Trait	Value	Rel.	Across Breed	
★★★★★	Dairy Beef Index	€194	52%	★★★★★	
★★★★★	Beef Sub-Index	€118	47%	★★	
★★★★★	Calving Sub-Index	€66	60%	★★★★★	
	Dairy Cow Calv. Diff.	1.8%	61%		
	Dairy Hfr Calv. Diff.	3.9%	60%		
★★★★★	Gestation Length (Days)	-3.22	60%	★★★★★	
★★★★★	Carcass Weight (Kg)	11.50	47%	★★	
★★★★★	Carcass Conformation	0.98	46%	★★	
★★★★★	Age at Finish (Days)	-20.73	67%	★★★★★	



Angus

Angus

AA8938

LISS BRUNO Y120

AA NIRLM222377192120



- Superstar Angus Bull with High DBI Sire €150
- Carcass Weight of +10.7Kgs Combined with A Beef Sub Index of €112 (Top 10% of the Angus Breed)
- Carcass, Performance & Low Birthweight in The One Package

Dairy Beef Index		ICBF Nov 24		
Within Breed	Trait	Value	Rel.	Across Breed
★ ★ ★	Dairy Beef Index	€150	47%	★ ★ ★
★ ★				★ ★
★ ★ ★	Beef Sub-Index	€112	45%	★ ★
★ ★ ★				★ ★
★ ★ ★	Calving Sub-Index	€32	50%	★ ★ ★
★				★ ★
	Dairy Cow Calv. Diff.	2.5%	52%	
	Dairy Hfr Calv. Diff.	8.2%	52%	
★ ★ ★	Gestation Length (Days)	-0.79	47%	★ ★ ★
★				★ ★
★ ★ ★	Carcass Weight (Kg)	10.70	48%	★ ★
★				★
★ ★ ★	Carcass Conformation	0.85	42%	★
★ ★				
★ ★ ★	Age at Finish (Days)	-18.63	60%	★ ★ ★
★ ★				★ ★

Angus

AA8172

DRUMCROW TRIBESMAN

AA NIRLM216633150834



- One of Dovea's Leading Angus Sires for Dairy Cows for 2024
- Progeny Are Very Powerful with Length
- Ideal Choice for Dairy Cows to Produce Profitable Angus Progeny
- Purchased in Association with The Irish Angus Producer Group for their Breed Improvement Programme

Dairy Beef Index		ICBF Nov 24		
Within Breed	Trait	Value	Rel.	Across Breed
★	Dairy Beef Index	€95	75%	★ ★ ★
★ ★	Beef Sub-Index	€84	65%	★
★	Calving Sub-Index	€8	93%	★ ★ ★
				★ ★
	Dairy Cow Calv. Diff.	4.0%	93%	
	Dairy Hfr Calv. Diff.	10.6%	77%	
★ ★	Gestation Length (Days)	-0.09	99%	★ ★ ★
				★ ★
★ ★ ★	Carcass Weight (Kg)	6.70	73%	★
★	Carcass Conformation	0.60	63%	★
★ ★	Age at Finish (Days)	-12.64	66%	★ ★ ★
				★ ★

Angus

NEW

AA9843

RYANS VICTORIOUS

AANIRLM217306310302

13-NOV-2022

Available in **spermvital**
SEMEN WITH
DOUBLE LIFESPAN



Alfie Shaw

- Superb Son of Our Top Dairy Beef Bull Keirsbeath Karma
- Big Long Powerful Bull with Exceptional Performance
- +13.1 Kgs Carcass Weight
- €110 Beef Sub Index
- Victorious Is the Perfect Replacement for his Sire Karma

DBWS Eligibility

Dairy Beef Index		ICBF Nov 24		
Within Breed	Trait	Value	Rel.	Across Breed
★ ★ ★	Dairy Beef Index	€121	51%	★ ★ ★ ★ ★
★ ★ ★ ★ ★	Beef Sub-Index	€110	49%	★ ★
★	Calving Sub-Index	€9	55%	★ ★ ★ ★ ★
	Dairy Cow Calv. Diff.	3.5%	62%	
	Dairy Hfr Calv. Diff.	10.3%	61%	
★	Gestation Length (Days)	0.6	46%	★ ★ ★ ★ ★
★ ★ ★ ★ ★	Carcass Weight (Kg)	13.10	52%	★ ★
★ ★ ★ ★ ★	Carcass Conformation	0.89	47%	★
★ ★ ★ ★ ★	Age at Finish (Days)	-16.28	68%	★ ★ ★ ★ ★

Angus

Angus

AA9619

KINGSBURY RED VICTOR

AANIRLM223045240261

Available in
spermvitalDBWS Eligibility
✔High Carcass
TraitsShort
GestationEasy
Calving

- Superior Carcass Red Angus Sire
- Great Balance Between Carc Weight, Calving Ease and Days to Slaughter
- The Perfect Choice for Dairy Cows for 2025 to Produce Excellent Calves

Dairy Beef Index ICBF Nov 24

Within Breed	Trait	Value	Rel.	Across Breed
★★★ ★★	Dairy Beef Index	€142	44%	★★★ ★★
★★★ ★	Beef Sub-Index	€101	38%	★
★★★ ★	Calving Sub-Index	€35	53%	★★★ ★★
	Dairy Cow Calv. Diff.	3.0%	48%	
	Dairy Hfr Calv. Diff.	8.8%	46%	
★★★ ★★	Gestation Length (Days)	-1.55	60%	★★★ ★★
★★★ ★	Carcass Weight (Kg)	10.70	37%	★★
★★★ ★	Carcass Conformation	0.81	35%	★
★★★ ★	Age at Finish (Days)	-16.91	58%	★★★ ★★

AA9628

HAWKLEY RED ZAMARI Y132

AANGBRM282331601132

DBWS Eligibility
✘Easy
CalvingShort
Gestation

- Similar Breeding to the Old Reliable Hawkley Red Zeppelin (ZEP)
- Low Birthweight, Short Gestation Pedigree with Lovely Natural Fleshing Abilities

Dairy Beef Index ICBF Nov 24

Within Breed	Trait	Value	Rel.	Across Breed
★★	Dairy Beef Index	€113	40%	★★★ ★★
★	Beef Sub-Index	€64	36%	★
★★★ ★★	Calving Sub-Index	€41	46%	★★★ ★★
	Dairy Cow Calv. Diff.	2.8%	45%	
	Dairy Hfr Calv. Diff.	7.7%	43%	
★★★ ★★	Gestation Length (Days)	-1.80	47%	★★★ ★★
★	Carcass Weight (Kg)	-4.70	36%	★
★★	Carcass Conformation	0.63	32%	★
★★★ ★★	Age at Finish (Days)	-13.13	55%	★★★ ★★

Angus

Angus

RINGFORT 1 CARLOS

HE8935

HERIRLM217220542302

12-AUG-2021

Available in
spermvital
SEMEN WITH
DOUBLE LIFESPAN



- An Exceptional Homozygous Polled High DBI Hereford Sire
- Extremely Short Gestation Hereford Sire at 282 Days Gestation
- Carlos Displays Exceptional Width & Shape with Impressive Fleshing Abilities
- Purchased in Association with Irish Hereford Prime for their Beef Sustainability Programme



Dairy Beef Index			ICBF Nov 24	
Within Breed	Trait	Value	Rel.	Across Breed
★★★★★	Dairy Beef Index	€120	65%	★★★★★
★★★★★	Beef Sub-Index	€99	51%	★
★★★★★	Calving Sub-Index	€15	90%	★★★★★
	Dairy Cow Calv. Diff.	3.9%	92%	
	Dairy Hfr Calv. Diff.	11.3%	61%	
★★★★★	Gestation Length (Days)	-1.15	98%	★★★★★
★★★	Carcass Weight (Kg)	4.70	53%	★
★★★★★	Carcass Conformation	0.69	50%	★
★★★	Age at Finish (Days)	-15.91	67%	★★★★★



Hereford

Hereford

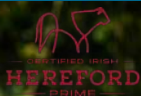
SKEHANORE FRUITFUL

HE7545

HERIRLM219970511001

04-NOV-2019

Available in
spermvital
SEMEN WITH
DOUBLE LIFESPAN



- Fruitful is the Hereford Sire That Ticks All the Boxes
- Exceptional Calf Quality
- Proven Easy Calver 3.3% C.D On Dairy Cows
- Proven Short Gestation 282 Days
- Purchased in Association with Irish Hereford Prime for their Beef Sustainability Programme



Dairy Beef Index		ICBF Nov 24		
Within Breed	Trait	Value	Rel.	Across Breed
★★★★★	Dairy Beef Index	€112	80%	★★★★★
★★	Beef Sub-Index	€78	72%	★
★★★★★	Calving Sub-Index	€27	95%	★★★★★
	Dairy Cow Calv. Diff.	3.3%	98%	
	Dairy Hfr Calv. Diff.	9.0%	70%	
★★★★★	Gestation Length (Days)	-0.87	99%	★★★★★
★★	Carcass Weight (Kg)	3.10	81%	★
★★	Carcass Conformation	0.48	76%	★
★★★★	Age at Finish (Days)	-16.83	76%	★★★★★



DAIRY PROGENY SLAUGHTER RECORDS

No. of Progeny in Proof	Average Days to Slaughter	Carcass Weight	Conformation
22	524	254kg	O
	Herd mates: 705	297kg	O+

Hereford

Hereford

CROWENSTOWN HANLEY

Best Sire
NEW
HE1503

HERIRLM223810290032

17-MAR-2023

Available in
spermvital
SEMEN WITH
DOUBLE LIFESPAN



Sexed Male Semen

- **Exceptional New Hereford Sire for Irish AI**
- **Sired by the Proven Superstar Connemlin Ollie (HE4105)**
- **Very Long, Well-Balanced Bull with Superb Balanced Indices**
- **Purchased in Association with Irish Hereford Prime for their Beef Sustainability Programme**



Dairy Beef Index		ICBF Nov 24		
Within Breed	Trait	Value	Rel.	Across Breed
★★★★★	Dairy Beef Index	€108	52%	★★★★★
★★★★★	Beef Sub-Index	€104	46%	★★
★★★	Calving Sub-Index	€0	61%	★★★★★
	Dairy Cow Calv. Diff.	3.9%	62%	
	Dairy Hfr Calv. Diff.	9.1%	60%	
★	Gestation Length (Days)	1.73	61%	★★★★★
★★★★★	Carcass Weight (Kg)	7.80	47%	★
★★★★★	Carcass Conformation	0.84	46%	★
★★★★★	Age at Finish (Days)	-20.87	68%	★★★★★



Hereford

Hereford

CHESTNUTPOLL 1 STAR 45

HE8547

HERIRLM215179040045

09-SEP-2020



- Star is the No.1 Proven Hereford Sire Available on Beef Sub Index
- Massive Carcass Weight of +13.80 Kgs Combined with 4.1% Calving Difficulty on Dairy Cows
- Use Star to Produce High CBV Calves
- Purchased in Association with Irish Hereford Prime for their Beef Sustainability Programme



Dairy Beef Index		ICBF Nov 24		
Within Breed	Trait	Value	Rel.	Across Breed
★★★★★	Dairy Beef Index	€110	65%	★★★★★
★★★★★	Beef Sub-Index	€116	51%	★★
★★★	Calving Sub-Index	-€7	90%	★★★★★
	Dairy Cow Calv. Diff.	4.1%	92%	
	Dairy Hfr Calv. Diff.	11.9%	59%	
★★	Gestation Length (Days)	1.20	98%	★★★★★★
★★★★★	Carcass Weight (Kg)	13.80	53%	★★
★★★★★	Carcass Conformation	0.76	51%	★
★★★	Age at Finish (Days)	-14.65	68%	★★★★★★



Hereford

Hereford



- Cormac Progeny from Dairy Cows are Truly Exceptional
- Calves Are Thick, Well-Made Calves with Length
- Purchased in Association with Irish Hereford Prime for their Beef Sustainability Programme



Dairy Beef Index			ICBF Nov 24	
Within Breed	Trait	Value	Rel.	Across Breed
★★★★	Dairy Beef Index	€91	76%	★★★
★★★	Beef Sub-Index	€83	67%	★
★★★★	Calving Sub-Index	€2	94%	★★★★★
	Dairy Cow Calv. Diff.	4.1%	97%	
	Dairy Hfr Calv. Diff.	10.6%	70%	
★★★★	Gestation Length (Days)	0.49	99%	★★★★★
★	Carcass Weight (Kg)	1.50	77%	★
★★★★★	Carcass Conformation	0.73	70%	★
★★★★	Age at Finish (Days)	-19.85	71%	★★★★★



DAIRY PROGENY SLAUGHTER RECORDS

No. of Progeny in Proof	Average Days to Slaughter	Carcass Weight	Conformation
14	520	225kg	O
	Herd mates: 730	289kg	O+

Hereford

Hereford

CH4160

POTTLEREAGH MARK

CHAIRLM121187090303



Available in **spermvital**

DBWS Eligibility



- Proven Charolais Sire Suitable for Mature Cows
- Mark Is an Ideal Choice to Improve Calf Sale Revenue

CH6292

KNOCKMAHON OPEL

CHAIRLM213018992296

#1 Proven Calv. SI Charolais



Available in **spermvital**

DBWS Eligibility



- Easy Calving, Short Gestation, Proven Sire
- 5.4% Calving Difficulty
- 284 Days Gestation Length
- Excellent Calf Quality

Hereford

Dairy Beef Index		ICBF Nov 24		
Within Breed	Trait	Value	Rel.	Across Breed
★★★	Dairy Beef Index	€89	89%	★★★
★★★	Beef Sub-Index	€171	88%	★★★
★★★	Calving Sub-Index	-€70	90%	★
	Dairy Cow Calv. Diff.	6.3%	93%	
	Dairy Hfr Calv. Diff.	15.0%	54%	
★	Gestation Length (Days)	3.83	99%	★
★★★	Carcass Weight (Kg)	34.50	99%	★★★
★★★	Carcass Conformation	2.00	99%	★★★
★★★	Age at Finish (Days)	-1.75	99%	★★★

Dairy Beef Index		ICBF Nov 24		
Within Breed	Trait	Value	Rel.	Across Breed
★★★	Dairy Beef Index	€132	82%	★★★
★★	Beef Sub-Index	€159	77%	★★★
★	Calving Sub-Index	-€20	91%	★★★
★★★	Dairy Cow Calv. Diff.	5.4%	97%	
★★	Dairy Hfr Calv. Diff.	13.1%	49%	
★★★	Gestation Length (Days)	0.06	99%	★★★
★★	Carcass Weight (Kg)	29.80	88%	★★★
★	Carcass Conformation	1.66	85%	★★★
★★★	Age at Finish (Days)	-1.48	83%	★★★

Hereford

CATTANVIEW SUPREME

CH8541

CHAIRLM225644960072

30-APR-2021



Available in **spermvital**

SEMEN WITH DOUBLE LIFESPAN



- Supreme is the No.1 Proven Beef Sub Index Charolais Sire Available
- €210 Beef Sub Index
- +47Kgs Carcass Weight
- 7.0% C.D on Dairy Cows
- Use Supreme on Mature Dairy Cows

Dairy Beef Index		ICBF Nov 24		
Within Breed	Trait	Value	Rel.	Across Breed
★ ★ ★	Dairy Beef Index	€97	63%	★ ★ ★ ★ ★
★ ★ ★ ★ ★	Beef Sub-Index	€210	54%	★ ★ ★ ★ ★
★	Calving Sub-Index	-€98	78%	★
	Dairy Cow Calv. Diff.	7.0%	73%	
	Dairy Hfr Calv. Diff.	17.9%	42%	
★	Gestation Length (Days)	4.03	95%	★
★ ★ ★ ★ ★	Carcass Weight (Kg)	47.0	56%	★ ★ ★ ★ ★
★ ★ ★ ★ ★	Carcass Conformation	2.40	50%	★ ★ ★ ★ ★
★ ★ ★ ★ ★	Age at Finish (Days)	-2.51	68%	★ ★ ★ ★ ★



Charolais

Charolais

DRUMLINE S 1185

LM9577

LIMIRLM213862931185

10-OCT-2021

Available in
spermital
SEMEN WITH
DOUBLE LIFESPAN



- Sky High DBI at €184 Combined with a Beef Sub Index of €209
- Sired by the Proven Easy Calving, Short Gestations Tomschoice Lexicon
- Excellent Quality Medium Sized Bull that Will Produce Beautiful Offspring from Dairy Cows with Massive CBV's



Dairy Beef Index		ICBF Nov 24		
Within Breed	Trait	Value	Rel.	Across Breed
★★★★★	Dairy Beef Index	€184	58%	★★★★★
★★★★★	Beef Sub-Index	€209	52%	★★★★★
★★★★★	Calving Sub-Index	-€15	66%	★★★★
	Dairy Cow Calv. Diff.	4.8%	55%	
	Dairy Hfr Calv. Diff.	11.2%	44%	
★★★★★	Gestation Length (Days)	1.3	86%	★★★★★
★★★★★	Carcass Weight (Kg)	37.50	55%	★★★★★
★★★★★	Carcass Conformation	2.70	48%	★★★★★
★★★	Age at Finish (Days)	0.71	67%	★★



Limousin

Limousin

SLIABH FELIM STERLING

LM8929

LIMIRLM219711160828

03-AUG-2021



Available in **spermvital**
SEMEN WITH
DOUBLE LIFESPAN



- **No.1 Proven Limousin Sire Available on Dairy Beef Index**
- **Newly Proven Easy Calving Limousin Sire for Dairy Cows**
- **3.9% Calving Difficulty**
- **Excellent Calf Quality**
- **Ideal Replacement Limousin for the Famous 'LM2014'**

Dairy Beef Index		ICBF Nov 24		
Within Breed	Trait	Value	Rel.	Across Breed
★★★★★	Dairy Beef Index	€170	62%	★★★★★
★★★★★	Beef Sub-Index	€177	51%	★★★★★
★★★★★	Calving Sub-Index	€1	80%	★★★★★
	Dairy Cow Calv. Diff.	3.9%	77%	
	Dairy Hfr Calv. Diff.	9.2%	45%	
★★★★★	Gestation Length (Days)	1.57	95%	★★★★★
★★★★★	Carcass Weight (Kg)	29.0	53%	★★★★★
★★★★★	Carcass Conformation	2.39	50%	★★★★★
★★★★★	Age at Finish (Days)	-1.38	68%	★★★



Limousin

Limousin

LM5443

BROOKLANDS MARCO

LIMIRLM215581331640



Available in **spermvital**

DBWS Eligibility



- Proven Short Gestation Limousin Sire at 287 Day Gestation
- Average Calving Difficulty on Dairy Cows
- Marco is the Ideal Choice for Taller, Plainer Dairy Cows to Produce Saleable Progeny

Dairy Beef Index		ICBF Nov 24		
Within Breed	Trait	Value	Rel.	Across Breed
★★★★ ★★	Dairy Beef Index	€160	92%	★★★★ ★★
★★★★ ★★	Beef Sub-Index	€186	90%	★★★★ ★★
★★★★ ★★	Calving Sub-Index	-€16	94%	★★★★ ★
	Dairy Cow Calv. Diff.	5.0%	97%	
	Dairy Hfr Calv. Diff.	10.9%	65%	
★★★★ ★★	Gestation Length (Days)	1.51	99%	★★★★ ★
★★★★ ★	Carcass Weight (Kg)	28.10	99%	★★★★ ★★
★★★★ ★	Carcass Conformation	2.28	99%	★★★★ ★★
★	Age at Finish (Days)	3.80	97%	★

Limousin

NEW

LM1946

GAGGIN TIMELY

LIMIRLM214866180216



DBWS Eligibility



- Impressive Tomschoice Lexicon Son with a Massive DBI of €173
- Huge Beef Sub Index of €193
- Use to Breed High CBV Calves
- +30.8 Kgs Carcass Weight

Dairy Beef Index		ICBF Nov 24		
Within Breed	Trait	Value	Rel.	Across Breed
★★★★ ★★	Dairy Beef Index	€173	52%	★★★★ ★★
★★★★ ★★	Beef Sub-Index	€193	50%	★★★★ ★★
★★★★ ★★	Calving Sub-Index	-€11	55%	★★★★ ★
	Dairy Cow Calv. Diff.	4.2%	55%	
	Dairy Hfr Calv. Diff.	10.7%	43%	
★★★★ ★★	Gestation Length (Days)	2.16	60%	★★★★ ★
★★★★ ★★	Carcass Weight (Kg)	30.80	53%	★★★★ ★★
★★★★ ★★	Carcass Conformation	2.46	47%	★★★★ ★★
★★★★ ★★	Age at Finish (Days)	-1.75	66%	★★★★ ★★

Limousin

LM7716

BROOKLANDS ROWAN

LIMIRLM215581351972



- Son of the Legendary EBV
- Short Gestation Sire at 288 Days
- Small Calves at Birth That Develop Rapidly
- Ideal Limousin Sire for Plainer Type Cows

Dairy Beef Index		ICBF Nov 24		
Within Breed	Trait	Value	Rel.	Across Breed
★★★ ★	Dairy Beef Index	€128	68%	★★★ ★★
★★	Beef Sub-Index	€157	62%	★★★ ★★
★★★ ★★	Calving Sub-Index	-€20	78%	★★★ ★
	Dairy Cow Calv. Diff.	4.3%	72%	
	Dairy Hfr Calv. Diff.	10.9%	50%	
★★★ ★★	Gestation Length (Days)	2.96	92%	★★
★★★	Carcass Weight (Kg)	23.70	68%	★★★ ★
★★★ ★★	Carcass Conformation	2.42	59%	★★★ ★★
★★★	Age at Finish (Days)	1.48	70%	★

Limousin

NEW

LM9948

CAVELANDS TIMBO

LIMIRLM215969790491



- Impressive Son of The Dairy Beef Legend LM2014 Ewdenvale Ivor
- Similar Type Bull to Ivor Himself Being Extremely Long with Medium Bone and Plenty Width
- Huge DBI of €163 Combined with an Impressive Beef SI of €185

Dairy Beef Index		ICBF Nov 24		
Within Breed	Trait	Value	Rel.	Across Breed
★★★ ★★	Dairy Beef Index	€163	51%	★★★ ★★
★★★	Beef Sub-Index	€185	50%	★★★ ★★
★★★ ★★	Calving Sub-Index	-€12	53%	★★★ ★
	Dairy Cow Calv. Diff.	3.8%	58%	
	Dairy Hfr Calv. Diff.	9.9%	57%	
★★★ ★	Gestation Length (Days)	3.07	46%	★★
★★★	Carcass Weight (Kg)	30.70	51%	★★★ ★★
★★★ ★★	Carcass Conformation	2.53	48%	★★★ ★★
★★★ ★★	Age at Finish (Days)	-2.63	68%	★★★ ★

Limousin

AU8953

DEERPARK ROWE

AUBIRLM213548891089



Sexed Male Semen

DBWS Eligibility



Easy Calving



Proven



High Carcass Traits

- Ireland's No.1 Proven Aubrac Sire Available on DBI
- €187 DBI
- €158 Beef Sub Index
- Proven Easy Calver on Dairy Cows at 2.9% Calving Difficulty
- Proven Short Gestation Sire at 282 Days

Dairy Beef Index ICBF Nov 24

Within Breed	Trait	Value	Rel.	Across Breed
★★★★ ★★	Dairy Beef Index	€187	61%	★★★★ ★★
★★★★ ★★★★	Beef Sub-Index	€158	46%	★★★★ ★★★★
★★★★ ★★	Calving Sub-Index	€30	88%	★★★★ ★★
	Dairy Cow Calv. Diff.	2.9%	92%	
	Dairy Hfr Calv. Diff.	7.7%	48%	
★★★★ ★★	Gestation Length (Days)	-0.51	97%	★★★★ ★★
★★★★ ★★★★	Carcass Weight (Kg)	21.50	49%	★★★★ ★
★★★★ ★★	Carcass Conformation	2.10	45%	★★★★ ★★
★★★	Age at Finish (Days)	-4.39	60%	★★★★ ★

Aubrac

AU6286

JOHNSTOWN NELSON 1039

AUBIRLM213578621924



DBWS Eligibility



Proven



High Carcass Traits

- The Carcass King of The Aubrac World
- Proven +16.2Kgs Carcass Weight
- Use Nelson on Mature Dairy Cows to Produce Heavy Progeny with Superb Conformation

Dairy Beef Index ICBF Nov 24

Within Breed	Trait	Value	Rel.	Across Breed
★	Dairy Beef Index	€110	90%	★★★★ ★
★★★★ ★	Beef Sub-Index	€146	86%	★★★★ ★
★	Calving Sub-Index	-€33	96%	★★★★
	Dairy Cow Calv. Diff.	5.2%	98%	
	Dairy Hfr Calv. Diff.	13.0%	79%	
★	Gestation Length (Days)	2.27	99%	★★★★
★★★★	Carcass Weight (Kg)	16.20	98%	★★★★
★★★★ ★	Carcass Conformation	1.90	97%	★★★★ ★★
★★★★ ★★	Age at Finish (Days)	-10.60	94%	★★★★ ★★

Aubrac

NEW

SP1299

ROCKVIEW KLASSY

SPZIRLM218054050782



- **Klassy Is an Exceptional New Speckle Park Sire**
- **Super Well Balanced Bull With a Superb Conformation**
- **Test Sire**

SP7347

KILBARRY HARPER

SPZIRLM212169780491



- **Proven Easy Calving Short Gestation Speckle Park Sire**
- **282 Days Gestation Length**
- **3.0% C.D On Dairy Cows**
- **Beautifully Marked, Lively Calves with Excellent Suckling Abilities**

Speckle Park

Dairy Beef Index		ICBF Nov 24		
Within Breed	Trait	Value	Rel.	Across Breed
★★★★	Dairy Beef Index	€100	41%	★★★★
★★★				★
★★★★	Beef Sub-Index	€58	38%	★
★★★				
★★★★	Calving Sub-Index	€37	45%	★★★★
★★★				★★★
	Dairy Cow Calv. Diff.	2.0%	49%	
	Dairy Hfr Calv. Diff.	5.5%	46%	
★★★★	Gestation Length (Days)	0.33	42%	★★★★
★★★				★★★
★★★★	Carcass Weight (Kg)	-5.30	57%	★
★★★★	Carcass Conformation	0.88	36%	★
★★★				
★★★★	Age at Finish (Days)	-11.64	57%	★★★★
				★★★

Speckle Park

Dairy Beef Index		ICBF Nov 24		
Within Breed	Trait	Value	Rel.	Across Breed
★★★★	Dairy Beef Index	€100	73%	★★★★
★★★				★
★★★★	Beef Sub-Index	€71	63%	★
★★★				
★★★★	Calving Sub-Index	€24	93%	★★★★
★★★				★★★
	Dairy Cow Calv. Diff.	3.0%	95%	
	Dairy Hfr Calv. Diff.	8.0%	71%	
★★★★	Gestation Length (Days)	0.11	99%	★★★★
★★★				★★★
★★★★	Carcass Weight (Kg)	-1.80	74%	★
★★★★	Carcass Conformation	0.80	68%	★
★★★				
★★★★	Age at Finish (Days)	-11.83	63%	★★★★
				★★★

TRIPLE RANGE

TECHNOLOGY



AAM113

Dovea Genetics Triple Angus AAM113

AA5217	Kilmacanann Philip
AA4305	Lisduff Leonardo
AA4638	Keirsbeath Karma S539



AAM131

Dovea Genetics Triple Angus AAM131

AA4743	Kealkil Prime Lad
AA5217	Kilmacanann Philip
AA7188	Kealkil Stockman



AAM188

Dovea Genetics Triple Angus AAM188

AA8172	Drumcrow Tribesman
AA1506	Carrowboy Vegas 2
AA9843	Ryans Victorious



LMM119

Dovea Genetics Triple Limousin LMM119

LM7077	Carrowreagh Pablo
LM5443	Brooklands Marco
LM2014	Ewdenvale Ivor



BBM182

Dovea Genetics Triple Blue BBM182

BB4438	An De Beuffaux
BB8226	Rathlyon Olaf
BB9789	Hausse De Jauvelan



XM1001

Dovea Genetics Mixed XM1001

HE8935	Ringfort 1 Carlos
AA7188	Kealkil Stockman



XM1016

Dovea Genetics Mixed XM1016

AA8172	Drumcrow Tribesman
HE7545	Skehanore Fruitful
BB8226	Rathlyon Olaf

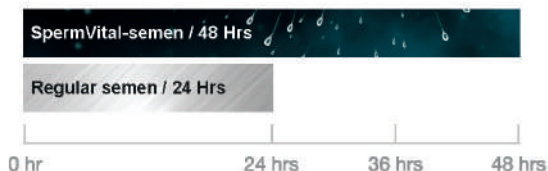


Prolongs the lifespan of semen up to 48 hours

SpermVital recommends using this technology under the following circumstances:

- ▲ Early insemination
- ▲ Weak signs of heat
- ▲ Problem cows
- ▲ Increase flexibility

Semen that lasts twice as long:



Bulls Available with Spermvital Technology

Code	Name	DBI	Beef SI	Carc. Wt.	Cow C.D.	Hfr C.D.
AA4743	Kealkil Prime Lad	€176	€100	2.10kg	2.1%	5.2%
AA9775	Fellfort V Rodger	€175	€107	7.70kg	1.8%	4.9%
AA9619	Kingsbury Red Victor	€142	€101	10.70kg	3.0%	8.8%
AA7188	Kealkil Stockman	€141	€77	0.50kg	1.9%	5.1%
AA9625	Rathfort U0129	€135	€80	3.50kg	2.2%	6.8%
AA5217	Kilmacanann Philip	€131	€77	1.40kg	2.6%	7.7%
AA9843	Ryans Victorious	€121	€110	13.10kg	3.5%	10.3%
AA8172	Drumcrow Tribesman	€95	€84	6.70kg	4.0%	10.6%
HE8935	Ringfort 1 Carlos	€120	€99	4.70kg	3.9%	11.3%
HE7545	Skehanore Fruitful	€112	€78	3.10kg	3.3%	9.0%
HE1503	Crowenstown Hanley	€108	€104	7.80kg	3.9%	9.1%
LM9577	Drumline S 1185	€184	€209	37.50kg	4.8%	11.2%
LM8929	Sliabh Felim Sterling	€170	€177	29.00kg	3.9%	9.2%
LM5443	Brooklands Marco	€160	€186	28.10kg	5.0%	10.9%
LM7713	Birchpark Rufus	€114	€165	22.30kg	5.0%	12.6%
CH6292	Knockmahon Opel	€132	€159	29.80kg	5.4%	13.1%
CH8541	Cattanview Supreme	€97	€210	47.00kg	7.0%	17.9%
CH4160	Pottlereagh Mark	€89	€171	34.50kg	6.3%	15.0%
BB8226	Rathlyon Olaf ET	€127	€179	31.10kg	6.4%	13.9%
BB8019	Negrta Du Lac	€65	€167	25.60kg	8.0%	16.2%
BB4438	An De Beaufaux	€46	€169	29.70kg	8.7%	18.9%

Triple Angus AAM131
 Now Also Available
 in Spermvital



SEXED MALE BEEF SEMEN



SexedULTRA 4M Male Beef Semen, a new advancement in semen sexing technology, has the potential to greatly benefit dairy farmers seeking to optimize their on-farm production. This innovative product offers conception rates comparable to conventional semen, addressing the reduced conception rates often associated with traditional sexed products. With double the number of semen cells per straw, SexedULTRA 4M Beef has the potential to be a game-changer for dairy farmers.

Bulls available as Sexed Male:

- Kealkil Prime Lad (AA4743)
- Kealkil Stockman (AA7188)
- Drumcrow Tribesman (AA8172)
- Fellfort V Rodger 1584 (AA9795)
- Deerpark Rowe (AU8953)
- An De Beuffaux (BB4438)
- Crownstown Hanley (HE1503)



Terms & Conditions

RISKS AND DISCLAIMERS

DOVEA GENETICS LIMITED ("DOVEA") AND SOUTH EASTERN CATTLE BREEDING SOCIETY LIMITED ("SECBS") DRAW YOUR ATTENTION TO THE FOLLOWING:

1 ANY TYPOGRAPHICAL, CLERICAL, OR OTHER ERROR OR OMISSION, MISDESCRIPTION OR MISTAKE IN ANY SALES LITERATURE, QUOTATION, PRICE LIST, ORDER CONFIRMATION, INVOICE OR OTHER DOCUMENT OR INFORMATION ISSUED BY ANY OF DOVEA OR SECBS (INCLUDING WITHOUT LIMITATION THIS DIRECTORY) SHALL BE SUBJECT TO CORRECTION WITHOUT ANY LIABILITY ON THE PART OF ANY OF DOVEA OR SECBS. NO SUCH ERROR, MISDESCRIPTION OR MISTAKE SHALL GIVE RISE TO ANY RIGHT OF ACTION, CLAIM OR ENTITLEMENT TO COMPENSATION OF ANY NATURE WHATSOEVER OR ANY RIGHT OF TERMINATION OR RECISSION.

2 ALL SAMPLES, DRAWINGS, DESCRIPTIVE MATTER, SPECIFICATIONS, ADVERTISING OR ANY OTHER PROMOTIONAL MATERIAL AND ANY DESCRIPTIONS OR ILLUSTRATIONS CONTAINED IN ANY DIRECTORY, CATALOGUES OR BROCHURES (INCLUDING WITHOUT LIMITATION THIS DIRECTORY) ARE ISSUED OR PUBLISHED FOR THE SOLE PURPOSE OF GIVING AN APPROXIMATE IDEA OF THE GOODS AND/OR THE SERVICES DESCRIBED IN THEM AND DO NOT CONSTITUTE ANY MATTERS OF FACT OR REPRESENTATION OR WARRANTY AS TO ITS SUBJECT MATTER OR INDUCING ANY PERSON TO ENTER INTO ANY CONTRACT. THEY SHALL NOT FORM PART OF ANY CONTRACT AND THERE SHALL BE NO SALE BY SAMPLE.

3 SEMEN IS THE PRODUCT OF A NATURAL BIOLOGICAL PROCESS OVER WHICH NEITHER DOVEA NOR SECBS HAS ANY DIRECT CONTROL AND NEITHER DOVEA NOR SECBS WARRANT OR REPRESENT THAT ANY SEMEN THAT ANY OF THEM SUPPLIES:

- (i) WILL RESULT IN A VIABLE PREGNANCY;
- (ii) WILL PRODUCE A CALF THAT EXHIBITS ALL OR ANY OF THE CHARACTERISTICS DESCRIBED IN ANY PROOF;
- (iii) WILL BE FREE FROM DEFECTS, INCLUDING GENETIC DEFECTS; OR
- (iv) WILL YIELD A PARTICULAR NUMBER OF CALVES.

4 IN THE CASE OF SEXED SEMEN, NEITHER DOVEA NOR SECBS WARRANTS OR REPRESENTS THAT THE SORTING LEVELS REFERRED TO IN ITS MARKETING LITERATURE WILL RESULT IN A CORRESPONDING SEX RATIO IN CALVES PRODUCED FROM SEMEN.

ALL ORDERS FOR ANY OF THE GOODS AND/OR SERVICES REFERRED TO IN THIS DIRECTORY SHALL BE SUBJECT TO DOVEA AND SECBS' TERMS AND CONDITIONS FOR THE SUPPLY OF GOODS AND/OR SERVICES AS AMENDED FROM TIME TO TIME. THE CURRENT VERSION OF SUCH TERMS CAN BE READ AT WWW.DOVEAGENETICS.IE. YOUR ATTENTION IS DRAWN TO THE PROVISIONS OF THOSE TERMS HEADED:

- a) APPLICATION OF CONDITIONS AND FORMATION OF CONTRACT
- b) DESCRIPTION OF GOODS OR SERVICES
- c) SEMEN DISTRIBUTION SERVICES
- d) CUSTOMER'S OBLIGATIONS
- e) WARRANTIES
- f) LIMITATION OF LIABILITY





DoveaGENETICS

Thurles, Co. Tipperary, Ireland, E41FH28

www.doveagenetics.ie



+353 (0) 504 21755



info@doveagenetics.ie

