

Dovea GENETICS

BEEF

DIRECTORY
2025



RECORD BREAKER
WINNER OF THE DOVEA GENETICS Sired CALF BONANZA
SOLD FOR €30,000 AT CARRICK WINTER FAIR 2024

Symbols Legend

	Potentially Produce High Priced Weanlings
	Potentially Produce High Carcass Value Cattle
	High Suckler Potential
	Easy Calving- Suitable for Heifers

	Carrier for Red Coat Colour
	Semen Royalty for Pedigree Use
	Homozygous Polled - 100% of Progeny will have No Horns
	Heterozygous Polled - 50% of Progeny will have No Horns



spermvital

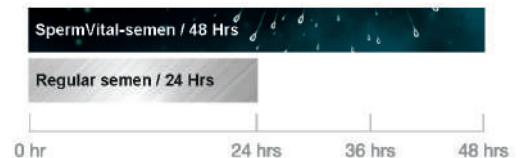
SEMEN WITH
DOUBLE LIFESPAN

Prolongs the lifespan
of semen up to 48 hours

SpermVital recommends using this technology under the following circumstances:

- ▲ Early insemination
- ▲ Weak signs of heat
- ▲ Problem cows
- ▲ Increase flexibility

Semen that lasts twice as long:



Terms & Conditions

RISKS AND DISCLAIMERS

DOVEA GENETICS LIMITED ("DOVEA") AND SOUTH EASTERN CATTLE BREEDING SOCIETY LIMITED ("SECBS") DRAW YOUR ATTENTION TO THE FOLLOWING: 1 ANY TYPOGRAPHICAL, CLERICAL, OR OTHER ERROR OR OMISSION, MISDESCRIPTION OR MISTAKE IN ANY SALES LITERATURE, QUOTATION, PRICE LIST, ORDER CONFIRMATION, INVOICE OR OTHER DOCUMENT OR INFORMATION ISSUED BY ANY OF DOVEA OR SECBS (INCLUDING WITHOUT LIMITATION THIS DIRECTORY) SHALL BE SUBJECT TO CORRECTION WITHOUT ANY LIABILITY ON THE PART OF ANY OF DOVEA OR SECBS. NO SUCH ERROR, MISDESCRIPTION OR MISTAKE SHALL GIVE RISE TO ANY RIGHT OF ACTION, CLAIM OR ENTITLEMENT TO COMPENSATION OF ANY NATURE WHATSOEVER OR ANY RIGHT OF TERMINATION OR RECISSION.

2 ALL SAMPLES, DRAWINGS, DESCRIPTIVE MATTER, SPECIFICATIONS, ADVERTISING OR ANY OTHER PROMOTIONAL MATERIAL AND ANY DESCRIPTIONS OR ILLUSTRATIONS CONTAINED IN ANY DIRECTORY, CATALOGUES OR BROCHURES (INCLUDING WITHOUT LIMITATION THIS DIRECTORY) ARE ISSUED OR PUBLISHED FOR THE SOLE PURPOSE OF GIVING AN APPROXIMATE IDEA OF THE GOODS AND/OR THE SERVICES DESCRIBED IN THEM AND DO NOT CONSTITUTE ANY MATTERS OF FACT OR REPRESENTATION OR WARRANTY AS TO ITS SUBJECT MATTER OR INDUCING ANY PERSON TO ENTER INTO ANY CONTRACT. THEY SHALL NOT FORM PART OF ANY CONTRACT AND THERE SHALL BE NO SALE BY SAMPLE.

3 SEMEN IS THE PRODUCT OF A NATURAL BIOLOGICAL PROCESS OVER WHICH NEITHER DOVEA NOR SECBS HAS ANY DIRECT CONTROL AND NEITHER DOVEA NOR SECBS WARRANT OR REPRESENT THAT ANY SEMEN THAT ANY OF THEM SUPPLIES:

- (i) WILL RESULT IN A VIABLE PREGNANCY;
- (ii) WILL PRODUCE A CALF THAT EXHIBITS ALL OR ANY OF THE CHARACTERISTICS DESCRIBED IN ANY PROOF;
- (iii) WILL BE FREE FROM DEFECTS, INCLUDING GENETIC DEFECTS; OR
- (iv) WILL YIELD A PARTICULAR NUMBER OF CALVES.

4 IN THE CASE OF SEXED SEMEN, NEITHER DOVEA NOR SECBS WARRANTS OR REPRESENTS THAT THE SORTING LEVELS REFERRED TO IN ITS MARKETING LITERATURE WILL RESULT IN A CORRESPONDING SEX RATIO IN CALVES PRODUCED FROM SEMEN.

ALL ORDERS FOR ANY OF THE GOODS AND/OR SERVICES REFERRED TO IN THIS DIRECTORY SHALL BE SUBJECT TO DOVEA AND SECBS' TERMS AND CONDITIONS FOR THE SUPPLY OF GOODS AND/OR SERVICES AS AMENDED FROM TIME TO TIME. THE CURRENT VERSION OF SUCH TERMS CAN BE READ AT WWW.DOVEAGENETICS.IE. YOUR ATTENTION IS DRAWN TO THE PROVISIONS OF THOSE TERMS HEADED:

- a) APPLICATION OF CONDITIONS AND FORMATION OF CONTRACT
- b) DESCRIPTION OF GOODS OR SERVICES
- c) SEMEN DISTRIBUTION SERVICES
- d) CUSTOMER'S OBLIGATIONS
- e) WARRANTIES
- f) LIMITATION OF LIABILITY

CONTENTS

Bull Code	Bull Name	Page Number	Bull Code	Bull Name	Page Number
Belgian Blue			Charolais Continued		
BB9840	Fier De La Hasse	1	CH2304	Clenagh Jasper 2	28
BB9780	Guerrier De Thiboumont	1	CH8535	Tullyvillage Shane	28
BB8337	Boherard Overdose ET	2	CH9862	Fury Total	29
BB9786	Wonderful Du Bois Remont	3	CH8971	Cloonglasna11 Socks ET	29
BB9792	Special Du Grand Doyer	3	CH5932	Bud Orpheus	30
BB4438	An De Beaufaux ♂♀	4	CH5872	Lebonvo	31
BB8019	Negrita Du Lac ♀	5	CH7830	Magique	31
Belgian Blue Special			CH4202	Tombapik	32
BB9722	Ronaldo VD Stokerij	6	S2163	Harestone Hercules	32
BB9745	Notaire Du Tordoir	6	SI381	Inverlochy Ferdie	32
BB8736	Red Lions De La Rouge Cense	7	Hereford		
BB6700	Moderato De L'Empereur	7	HE1503 <small>NEW</small>	Crownstown Hanley ♂	33
BB1096	Tanker De Martinpre	8	HE7545	Skehanore Fruitful	33
BB5355	Engin D'Hontoir	8	HE8547	Chestnutpoll 1 Star 45	34
BB1106	Vlinder VH Sijlsloberg	9	HE8935	Ringfort 1 Carlos	34
BB1524 <small>NEW</small>	Apple De Mahonay	9	Simmental		
<small>NEW</small>	Helium De Fooz	10	SI7353	Clonagh Longshot Fab P ET	35
BB2549 <small>NEW</small>	Safari VD Strokij	10	SI4147	Curaheen Gunshot P ♀	35
BB2552 <small>NEW</small>	Apollon De Dessous La Ville	11	Parthenaise		
BB2546 <small>NEW</small>	Stigma Van Terbeck	11	PT8923	Hongrois	36
BB7842	Maradona Du Champ Du Moulin	12	PT8481	Obama	36
BB8544	Geronimo Van Perenhof	12	Aubrac		
BB1100	Jupiter De Martinpre	13	AU6286	Johnstown Nelson 1039	37
BB7659	Charleston Des Peupliers	13	AU8953	Deerpark Rowe ♂	37
Limousin			Saler		
LM9577	Drumline S 1185 ♀	14	SA6253	Montesqieu	38
LM5443	Brooklands Marco ♀	15	Blonde d'Aquitaine		
LM7716	Brooklands Rowan	15	BA4661	Glacon	38
LM8929	Sliabh Felim Sterling ♀	16	BA4131	Baltra Iceman	39
LM9948 <small>NEW</small>	Cavelands Timbo	17	BA6709	Happy	39
LM1946 <small>NEW</small>	Gaggin Timely	17	Shorthorn		
LM9655	Brontemoor Salering ♀	18	SH2555 <small>NEW</small>	Driney Nice Guy (RO) (P)	40
LM7713	Birchpark Rufus ♀	19	SH4609	Clonina Explorer 300 (RO) (P)	41
EBY	Elderberry Galahad	19	SH6424	Castlefin Hotshot (P) (ET)	41
LM6529	Claddagh McCabe (ET) ♀	20	Angus		
LM9622	Glenford Sam	21	AA1506 <small>NEW</small>	Carrowboy Vegas 2	42
LM4745	Ernevalley Madison ET	21	AA1964 <small>NEW</small>	Fellfort W Rex 1643	43
LM2188	Wilodge Joskins	22	AA1943 <small>NEW</small>	Fellfort W Robo 1637	43
LM5887	Ivantonov	22	AA9619	Kingsbury Red Victor	44
Charolais			AA4373	Kealkil Prime Lad ♂♀	44
CH1287 <small>NEW</small>	Kilvilcorris Tim	23	AA8172	Drumcrow Tribesman ♂♀	45
CH2554 <small>NEW</small>	Goodmoove Usher ET	24	AA9843 <small>NEW</small>	Ryans Victorious	45
CH4160	Pottlereagh Mark	25	AA8938	Liss Bruno Y120	46
CH6292	Knockmahon Opel	25	AA5373	Stouphill Bomber T182	46
CH8968	Clenagh Superior ET	26			
CH8541	Cattanview Supreme	27			
CH5827	Ocelot	27			



**BB9840**

FIER DE LA HASSE

BBLBELM000464969577 24-JUN-2022

Myostatin: 2 X NT821



Snapshots



Sire: Baigneur de la Hasse



- Exceptional Black & White Belgian Blue Sire
- Sired by the Impressive 'Baigneur' and his Granddam is a Full Sister to Rocco De La Hasse
- Pedigree, Style and Muscle in the One Package

Eurostar Index		ICBF Nov. 24		
Within Breed	Trait	Value	Rel.	Across Breed
★★★★★	Replacement Index	€64	35%	★★
★★★	Terminal Index	€122	36%	★★★★★
★★★★	Dairy Beef Index	€96	34%	★★★

Calving Difficulty			
Beef Cow Calving Difficulty	7.9%	54%	Breed avg: 9.82%
Beef Hfr Calving Difficulty	14.2%	42%	Breed avg: 17.78%

Expected Progeny Performance				
★★★	Docility	0.17	31%	★★★★★
★★★	Carcass Weight (kg)	34.6	31%	★★★★★
★	Carcass Conformation	2.39	31%	★★★★★

Expected Daughter Performance				
	Daughter Calving Diff.	7.44	51%	
★★★★★	Daughter Milk (kg)	6.10	31%	★★★★★
★★★★★	Daughter Calv. Interval	2.96	31%	★

Belgian Blue

**BB9780**

GUERRIER DE THIBOUMONT

BBLBELM000266153953 11-SEP-2022

Myostatin: 2 X NT821



Snapshots



Sire: Brilliant de Roupage



- Extreme Muscle Choice
- Sire 'Brilliant' is Breeding Excellent Muscular Progeny in Belgium
- Frome the Same Herd as 'Affute BB4597'

Eurostar Index		ICBF Nov. 24		
Within Breed	Trait	Value	Rel.	Across Breed
★★	Replacement Index	€4	35%	★
★★	Terminal Index	€111	37%	★★★★★
★★★	Dairy Beef Index	€75	36%	★★

Calving Difficulty			
Beef Cow Calving Difficulty	11.3%	56%	Breed avg: 9.82%
Beef Hfr Calving Difficulty	18.3%	44%	Breed avg: 17.78%

Expected Progeny Performance				
★★★★★	Docility	0.26	32%	★★★★★
★★★	Carcass Weight (kg)	36.1	32%	★★★★★
★★★★★	Carcass Conformation	3.04	32%	★★★★★

Expected Daughter Performance				
	Daughter Calving Diff.	10.67	52%	
★★★★★	Daughter Milk (kg)	6.40	31%	★★★★★
★	Daughter Calv. Interval	7.56	31%	★

Belgian Blue

BOHERARD OVERDOSE ET

BB8337

BBLIRLM226537850044

16-SEP-2020

Myostatin: 2 X NT821



Progeny



Interbreed Champion at Agri Expo 2024

€17,200 at Carrick Winter Fair 2024

All-Ireland Champion Belgian Blue 2024

€15,000 at Carrick Winter Fair 2024

Blue Champion - Royal Welsh Show 2024

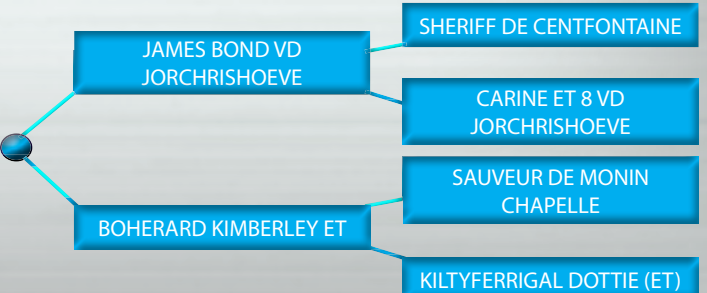
Eurostar Index		ICBF Nov. 24		
Within Breed	Trait	Value	Rel.	Across Breed
★	Replacement Index	-€33	49%	★
★	Terminal Index	€101	57%	★★★
★★★	Dairy Beef Index	€79	54%	★★

Calving Difficulty			
Beef Cow Calving Difficulty	14.0%	88%	Breed avg: 9.82%
Beef Hfr Calving Difficulty	20.4%	52%	Breed avg: 17.78%

Expected Progeny Performance				
★★★★★	Docility	0.22	64%	★★★★★
★★★★★	Carcass Weight (kg)	38.9	55%	★★★★★
★★★★★	Carcass Conformation	2.95	49%	★★★★★

Expected Daughter Performance				
	Daughter Calving Diff.	10.14	80%	
★★	Daughter Milk (kg)	3.10	38%	★★★
★★★	Daughter Calv. Interval	5.18	37%	★

- The King of the Irish Commercial and Pedigree Show Ring in 2024
- Exceptional, Correct, Stylish Cattle with Bone, Power and Extreme Width
- Overdose Progeny Sold to Highs of €17,200 and €15,000 at Winter Fair Carrick on Shannon
- Use Overdose to Produce Show Stoppers



Belgian Blue

Belgian Blue

**BB9786****WONDERFUL DU BOIS REMONT**

BBLBELM000367060324 21-MAR-2022

Myostatin: 2 X NT821



- Wonderful is a Really Powerful, Extreme White Bull
- Progeny will Exhibit Extraordinary Shape & Length with Exceptional Weight for Age
- First Calves Due Spring 25

Eurostar Index		ICBF Nov. 24		
Within Breed	Trait	Value	Rel.	Across Breed
★★★★★	Replacement Index	€78	35%	★★
★★★★	Terminal Index	€141	37%	★★★★★
★★★★★	Dairy Beef Index	€112	36%	★★★★★

Calving Difficulty				
Beef Cow Calving Difficulty	9.8%	55%	Breed avg: 9.82%	
Beef Hfr Calving Difficulty	16.9%	42%	Breed avg: 17.78%	

Expected Progeny Performance				
★★★★★	Docility	0.22	32%	★★★★★
★★★	Carcass Weight (kg)	35.9	33%	★★★★★
★★	Carcass Conformation	2.66	33%	★★★★★

Expected Daughter Performance				
	Daughter Calving Diff.	10.63	52%	
★★★★★	Daughter Milk (kg)	7.70	32%	★★★★★
★★★	Daughter Calv. Interval	3.66	31%	★

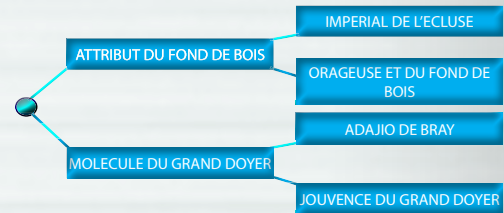
**BB9792****SPECIAL DU GRAND DOYER**

BBLBELM000866173406 01-MAY-2022

Myostatin: 2 X NT821



Sire: Attribut Du Fond De Bois



- Special is a Beautiful Fancy, Stylish White Bull with an Excellent Pedigree
- Super Head to this Bull with Muscle & Length to Match
- First Calves Due Spring 25

Eurostar Index		ICBF Nov. 24		
Within Breed	Trait	Value	Rel.	Across Breed
★★	Replacement Index	€10	46%	★
★★★★	Terminal Index	€137	48%	★★★★★
★★	Dairy Beef Index	€41	47%	★

Calving Difficulty				
Beef Cow Calving Difficulty	9.6%	67%	Breed avg: 9.82%	
Beef Hfr Calving Difficulty	19.4%	55%	Breed avg: 17.78%	

Expected Progeny Performance				
★★★★★	Docility	0.23	45%	★★★★★
★★★★	Carcass Weight (kg)	37.0	45%	★★★★★
★★★★★	Carcass Conformation	3.20	45%	★★★★★

Expected Daughter Performance				
	Daughter Calving Diff.	11.92	63%	
★★★★	Daughter Milk (kg)	5.30	43%	★★★★
★★	Daughter Calv. Interval	6.50	39%	★

Belgian Blue

Belgian Blue

AN DE BEAUFFAUX

BB4438

BBLBELM000556713602

31-DEC-2015

Myostatin: 2 X NT821

ICBF
Suitable for
SCEP
Scheme



Sexed Female
Semen



Sexed Male
Semen



Available in
spermvital
SEMEN WITH
DOUBLE LIFESPAN

Progeny



Prizewinner at Carrick Winter Fair 2024 €6,500 & Champion at Markethill 2024 Overall Blue x Champion Carrick 2023 €10,300 at Tateetra Sale 2023 1st Prize Winner at Oldcastle Show 2024

Eurostar Index ICBF Nov. 24

Within Breed	Trait	Value	Rel.	Across Breed
★★★★★	Replacement Index	€71	85%	★★
★	Terminal Index	€91	92%	★★★
★★	Dairy Beef Index	€46	92%	★

Calving Difficulty

Beef Cow Calving Difficulty	9.1%	99%	Breed avg: 9.82%
Beef Hfr Calving Difficulty	16.0%	91%	Breed avg: 17.78%

Expected Progeny Performance

★★★★★	Docility	0.18	99%	★★★★★
★	Carcass Weight (kg)	29.7	99%	★★★★★
★★	Carcass Conformation	2.67	99%	★★★★★

Expected Daughter Performance

	Daughter Calving Diff.	7.17	98%	
★★	Daughter Milk (kg)	3.50	84%	★★★
★★	Daughter Calv. Interval	5.53	52%	★



- Ireland's Most Popular Belgian Blue Sire
- Breeding Serious, Powerful Progeny with Length, Extreme Muscle and They Ooze Style
- Sired Many High-Priced Progeny Throughout '24
- Average Calving Difficulty – Ideal for Second Calving Cows Onwards
- Red Gene Carrier
- **Sexed Female & Male Semen Available**



Belgian Blue

Belgian Blue

NEGRITA DU LAC

BB8019

BBLBELM000861597840

22-JUN-2020

Myostatin: 2 X NT821

ICBF
Suitable for
SCEP
Scheme

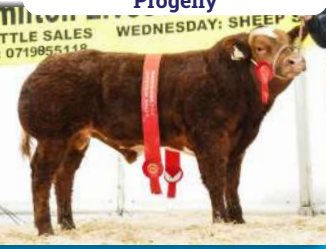


Sexed Female
Semen



Available in
spermvital
SEMEN WITH
DOUBLE LIFESPAN

Progeny



1st Prize Blue Calf - Manorhamilton Fatstock



All-Ireland Roan Calf Champion 2024



€9,700 & Blue Champion at Stranorlar 2024



Erris Calf Champion 2023



€3,700 at Carrick Winter Fair 2024

Eurostar Index		ICBF Nov. 24		
Within Breed	Trait	Value	Rel.	Across Breed
★★★★	Replacement Index	€43	60%	★
★	Terminal Index	€72	77%	★★
★★★	Dairy Beef Index	€65	77%	★

Calving Difficulty				
Beef Cow Calving Difficulty	11.0%	98%	Breed avg: 9.82%	
Beef Hfr Calving Difficulty	18.1%	55%	Breed avg: 17.78%	

Expected Progeny Performance				
★★★	Docility	0.15	96%	★★★★★
★	Carcass Weight (kg)	25.6	82%	★★★★★
★★	Carcass Conformation	2.63	76%	★★★★★

Expected Daughter Performance				
	Daughter Calving Diff.	6.72	90%	
★★★	Daughter Milk (kg)	4.30	34%	★★★★★
★★★★★	Daughter Calv. Interval	2.77	41%	★

- The Ultimate Red & White Belgian Blue Sire
- Negrita is Transmitting Excellent Muscling with Power and Style
- Progeny Continue to Command Top Prices in 2024 Selling to Highs of €9700 at the Elite Commercial Haltered Sale Stranorlar
- **Sexed Female Semen Available**



Belgian Blue

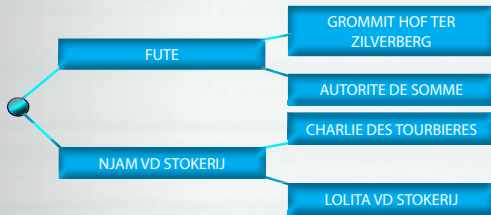
Belgian Blue

**BB9722**

RONALDO VD STOKERIJ

BBLBELM000329242112 21-FEB-2021

Myostatin: 2 X NT821

**Progeny**

- Extreme Muscle with Beautiful Heads
- Sired by the Renowned Muscle Bull 'Fute'
- Highest Conformation Progeny Records of All Blue Sires
- Use Ronaldo on Plainer Cows to Breed Fatstock Champions

Eurostar Index		ICBF Nov. 24		
Within Breed	Trait	Value	Rel.	Across Breed
★★★★★	Replacement Index	€75	35%	★★
★★	Terminal Index	€112	37%	★★★★★
★★	Dairy Beef Index	€58	36%	★

Calving Difficulty			
Beef Cow Calving Difficulty	8.4%	60%	Breed avg: 9.82%
Beef Hfr Calving Difficulty	16.2%	43%	Breed avg: 17.78%

Expected Progeny Performance				
★★★★	Docility	0.19	32%	★★★★★
★	Carcass Weight (kg)	29.0	31%	★★★★★
★★	Carcass Conformation	2.63	31%	★★★★★

Expected Daughter Performance				
	Daughter Calving Diff.	8.80	56%	
★★★★★	Daughter Milk (kg)	6.70	31%	★★★★★
★★★★	Daughter Calv. Interval	3.59	31%	★

Belgian Blue**BB9745**

NOTAIRE DU TORDOIR

BBLBELM000961559726 10-AUG-2019

Myostatin: 2 X NT821

**Progeny**

- Notaire is a Powerhouse of a Belgian Blue Bull
- Serious Extreme Hard Muscle
- Sired by 'Fute'
- Breeding Heavily Muscled Weanlings Commanding Top Prices for Export Market

Eurostar Index		ICBF Nov. 24		
Within Breed	Trait	Value	Rel.	Across Breed
★★★★★	Replacement Index	€86	35%	★★
★★★	Terminal Index	€125	37%	★★★★★
★★★	Dairy Beef Index	€74	36%	★★

Calving Difficulty			
Beef Cow Calving Difficulty	6.7%	57%	Breed avg: 9.82%
Beef Hfr Calving Difficulty	14.0%	42%	Breed avg: 17.78%

Expected Progeny Performance				
★★★★★	Docility	0.21	32%	★★★★★
★	Carcass Weight (kg)	29.2	32%	★★★★★
★	Carcass Conformation	2.41	31%	★★★★★

Expected Daughter Performance				
	Daughter Calving Diff.	8.05	53%	
★★★★★	Daughter Milk (kg)	6.40	31%	★★★★★
★★★★	Daughter Calv. Interval	3.51	31%	★

Belgian Blue



BB8736

RED LIONS DE LA ROUGE CENSE

BBLBELM000764211342 28-AUG-2020

Myostatin: 2 X NT821



Progeny



€4,600 at Carrick 2024

Champion Heifer Donegal Mart Show & Sale 2024

Red Lions x Shorthorn Dam

€19,000-Elite Sale Stranorlar 2024



- Red Lions Progeny Have Excelled in 2024
- Sire of the Highest Priced Pedigree Red & White Belgian Blue Heifer Sold at €19000 at The Elite Commercial Haltered Sale Stranorlar
- Breeding Serious Power, Width & Colour in His Progeny

Eurostar Index			ICBF Nov. 24	
Within Breed	Trait	Value	Rel.	Across Breed
★★★★	Replacement Index	€50	44%	★
★	Terminal Index	€91	49%	★★★★
★★	Dairy Beef Index	€50	49%	★

Calving Difficulty				
Beef Cow Calving Difficulty	8.6%	90%	Breed avg: 9.82%	
Beef Hfr Calving Difficulty	16.4%	47%	Breed avg: 17.78%	

Expected Progeny Performance				
★★★★★	Docility	0.31	70%	★★★★★
★	Carcass Weight (kg)	25.8	41%	★★★★★
★	Carcass Conformation	2.58	35%	★★★★★

Expected Daughter Performance				
	Daughter Calving Diff.	9.16	82%	
★★★★	Daughter Milk (kg)	5.10	32%	★★★★
★★★★	Daughter Calv. Interval	4.15	34%	★

Belgian Blue



BB6700

MODERATO DE L EMPEREUR

BBLBELM000463658328 12-SEP-2018

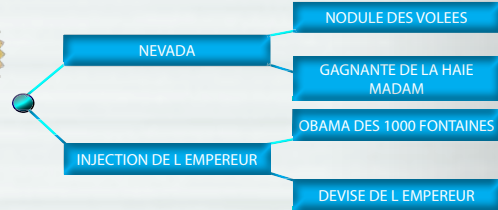
Myostatin: 2 X NT821



Progeny



1st Prize at Bonniconlon Show 2024



- Huge Farmer Satisfaction with Moderato Progeny
- Well Balanced Progeny with Beautiful Breed Character, Correctness, Plates and Muscling
- Use Moderato on Well-Made Limousin Cows to Produce Show Calves

Eurostar Index			ICBF Nov. 24	
Within Breed	Trait	Value	Rel.	Across Breed
★★★	Replacement Index	€25	51%	★
★★	Terminal Index	€117	64%	★★★★
★★	Dairy Beef Index	€39	62%	★

Calving Difficulty				
Beef Cow Calving Difficulty	14.1%	93%	Breed avg: 9.82%	
Beef Hfr Calving Difficulty	22.3%	50%	Breed avg: 17.78%	

Expected Progeny Performance				
★★★★	Docility	0.19	77%	★★★★★
★★★★★	Carcass Weight (kg)	42.8	66%	★★★★★
★★★★★	Carcass Conformation	3.08	59%	★★★★★

Expected Daughter Performance				
	Daughter Calving Diff.	7.26	82%	
★★★★★	Daughter Milk (kg)	6.00	33%	★★★★
★★	Daughter Calv. Interval	6.02	37%	★

Belgian Blue



BB1096

TANKER DE MARTINPRE

BBLBELM000162635403 28-JAN-2021

Myostatin: 2 X NT821



Progeny



- Superb Bull to Add Colour, Length and Style
- Progeny Inspected in Belgium are Very Attractive with Beautiful Heads and Quality
- Tanker Works Best on Medium-Sized Cows to Breed Colour & Style

Eurostar Index		ICBF Nov. 24		
Within Breed	Trait	Value	Rel.	Across Breed
★★★★	Replacement Index	€61	35%	★
★★	Terminal Index	€108	37%	★★★★
★★★★	Dairy Beef Index	€104	35%	★★★★

Calving Difficulty			
Beef Cow Calving Difficulty	6.2%	55%	Breed avg: 9.82%
Beef Hfr Calving Difficulty	12.6%	41%	Breed avg: 17.78%

Expected Progeny Performance				
★★★	Docility	0.16	31%	★★★★★
★	Carcass Weight (kg)	28.6	32%	★★★★★
★	Carcass Conformation	2.31	31%	★★★★★

Expected Daughter Performance				
	Daughter Calving Diff.	9.54	51%	
★★★★	Daughter Milk (kg)	5.10	31%	★★★★
★★★★★	Daughter Calv. Interval	2.38	31%	★

Belgian Blue



BB5355

ENGIN D HONTOIR

BBLBELM000858699848 23-NOV-2016

Myostatin: 2 X NT821



Progeny



Overall Champion - Highland Show '23

€5,200 at Manorhamilton Show & Sale 2024



- Engin has Sired Numerous Pedigree Champions Throughout the UK Pedigree Show Circuit
- Transmits Extreme Length, Plenty of Muscle & Exceptional Colours
- Use Engin to Breed Something Extra Special for the Show Ring

Eurostar Index		ICBF Nov. 24		
Within Breed	Trait	Value	Rel.	Across Breed
★★★	Replacement Index	€37	48%	★
★	Terminal Index	€101	55%	★★★
★★★	Dairy Beef Index	€67	52%	★

Calving Difficulty			
Beef Cow Calving Difficulty	12.6%	79%	Breed avg: 9.82%
Beef Hfr Calving Difficulty	20.1%	46%	Breed avg: 17.78%

Expected Progeny Performance				
★★★★★	Docility	0.31	50%	★★★★★
★★★★	Carcass Weight (kg)	39.1	57%	★★★★★
★★	Carcass Conformation	2.64	49%	★★★★★

Expected Daughter Performance				
	Daughter Calving Diff.	8.73	73%	
★	Daughter Milk (kg)	2.50	39%	★★★
★★★★★	Daughter Calv. Interval	3.28	37%	★

Belgian Blue



BB1106

VLINDER VD SIJSLOBERG

BBLBELM000914882091

21-NOV-2020

Myostatin: 2 X NT821



- Vlinder is a Maternal Brother to the Popular Dovea Sire 'Tattoo (BB6703)'
- Bone, Power, Muscle and Correctness All in the One Package
- Huge Farmer Satisfaction with Initial Progeny in Ireland

Eurostar Index		ICBF Nov. 24		
Within Breed	Trait	Value	Rel.	Across Breed
★★★★★	Replacement Index	€67	37%	★★
★★★★	Terminal Index	€141	40%	★★★★★
★★★★	Dairy Beef Index	€93	39%	★★★

Calving Difficulty				
Beef Cow Calving Difficulty	8.5%	60%	Breed avg: 9.82%	
Beef Hfr Calving Difficulty	16.3%	46%	Breed avg: 17.78%	

Expected Progeny Performance				
★★★★★	Docility	0.22	36%	★★★★★
★★★	Carcass Weight (kg)	34.7	36%	★★★★★
★★★★	Carcass Conformation	3.00	35%	★★★★★

Expected Daughter Performance				
	Daughter Calving Diff.	8.67	56%	
★★★★	Daughter Milk (kg)	4.80	33%	★★★★
★	Daughter Calv. Interval	6.70	32%	★

Belgian Blue



BB1524

APPLE DE MAHONAY

BBLBELM000120790255

23-JUL-2022

Myostatin: 2 X NT821



- Apple is a Powerhouse of a Bull with All the Muscle & Length You Could Wish For
- From the Same Herd that Brought you Avicii
- Use Apple to Breed Extreme, Correct, Show Quality Commercial Calves

Eurostar Index		ICBF Nov. 24		
Within Breed	Trait	Value	Rel.	Across Breed
★★★	Replacement Index	€25	35%	★
★★	Terminal Index	€104	37%	★★★★
★	Dairy Beef Index	-€41	35%	★

Calving Difficulty				
Beef Cow Calving Difficulty	13.8%	55%	Breed avg: 9.82%	
Beef Hfr Calving Difficulty	24.1%	42%	Breed avg: 17.78%	

Expected Progeny Performance				
★★★★★	Docility	0.24	32%	★★★★★
★★★★	Carcass Weight (kg)	38.2	32%	★★★★★
★★★	Carcass Conformation	2.83	32%	★★★★★

Expected Daughter Performance				
	Daughter Calving Diff.	9.25	52%	
★★★★	Daughter Milk (kg)	5.30	31%	★★★★
★★★★	Daughter Calv. Interval	3.57	31%	★

Belgian Blue

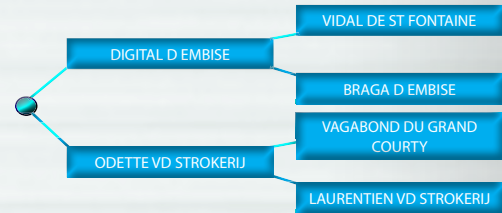
**BB2549**

HELIUM DE FOOZ

SAFARI VD STROKIJ

BBLBELM000067039564 22-MAY-2022 Myostatin: 2 X NT821

BBLBELM000920612242 18-AUG-2022 Myostatin: 2 X NT821

HELIUM DE FOOZ (AMARETTO X HAZARD)
MUSCLES: 1005 KG - 138 CM (est.)

- Selected in Belgium to Breed Top Quality Weanlings for High Value Markets
- Extreme Muscling, Medium Sized with a Beautiful Head in the one Package
- Serious Pedigree Including the Noted 'Fute' X 'Hazard'

- New Bull Selected to Breed High-Priced, Colourful Female Progeny
- Safari is Extremely Long & Muscular with Superb Colouring
- Very Fit, Mobile Bull with Super Legs & Feet and a Beautiful Head

Eurostar Index		ICBF Nov. 24		
Within Breed	Trait	Value	Rel.	Across Breed
	Replacement Index	€	%	
	Terminal Index	€	%	
	Dairy Beef Index	€	%	

Eurostar Index		ICBF Nov. 24		
Within Breed	Trait	Value	Rel.	Across Breed
★★★★★	Replacement Index	€139	33%	★★★★★
★★★★	Terminal Index	€135	34%	★★★★★
★★★★	Dairy Beef Index	€107	33%	★★★★★

Calving Difficulty			
Beef Cow Calving Difficulty	%	%	Breed avg: 9.82%
Beef Hfr Calving Difficulty	%	%	Breed avg: 17.78%

Calving Difficulty			
Beef Cow Calving Difficulty	6.0%	42%	Breed avg: 9.82%
Beef Hfr Calving Difficulty	12.9%	56%	Breed avg: 17.78%

Expected Progeny Performance				
★★★	Docility	0.15	7%	★★★★★
★	Carcass Weight (kg)	21.84	7%	★★★★★
★	Carcass Conformation	1.97	7%	★★★★★

Expected Progeny Performance				
★★★★	Docility	0.20	31%	★★★★★
★★	Carcass Weight (kg)	31.0	31%	★★★★★
★★★	Carcass Conformation	2.90	31%	★★★★★

Expected Daughter Performance				
	Daughter Calving Diff.		%	
★★★★★	Daughter Milk (kg)	5.75	5%	★★★★★
★★★★	Daughter Calv. Interval	4.23	4%	★

Expected Daughter Performance				
	Daughter Calving Diff.	6.98	50%	
★★★★★	Daughter Milk (kg)	6.90	31%	★★★★★
★★★★	Daughter Calv. Interval	4.30	30%	★

Belgian Blue

Belgian Blue



BB2552

APOLLON DE DESSOUS LA VILLE

BBLBELM000564760685 21-DEC-2021 Myostatin: 2 X NT821



- Apollon Possesses one of the Nicest Heads We've Seen on a Belgian Blue Bull Seen for Many Years
- Extremely Long Black & White Bull with a Super Topline & Very Correct
- Use Apollon on Muscular Cows to Breed Show Calves

Eurostar Index		ICBF Nov. 24		
Within Breed	Trait	Value	Rel.	Across Breed
★ ★ ★	Replacement Index	€23	37%	★
★ ★ ★	Terminal Index	€124	39%	★ ★ ★ ★
★	Dairy Beef Index	€12	38%	★

Calving Difficulty			
Beef Cow Calving Difficulty	10.0%	61%	Breed avg: 9.82%
Beef Hfr Calving Difficulty	20.1%	45%	Breed avg: 17.78%

Expected Progeny Performance				
★ ★ ★ ★ ★	Docility	0.24	38%	★ ★ ★ ★ ★
★ ★ ★ ★	Carcass Weight (kg)	37.0	39%	★ ★ ★ ★ ★
★ ★ ★ ★	Carcass Conformation	2.95	38%	★ ★ ★ ★ ★

Expected Daughter Performance				
	Daughter Calving Diff.	9.0	52%	
★ ★ ★ ★	Daughter Milk (kg)	5.30	34%	★ ★ ★ ★
★	Daughter Calv. Interval	7.38	33%	★



BB2546

STIGMA VAN TERBECK

BBLBELM000918160937 25-JUN-2022 Myostatin: 2 X NT821



- Stigma is an Exceptional Black & White, Extreme Muscle Type
- Serious Depth of Pedigree including Sheriff, Benhur and Hazard
- Use Stigma to Produce Top End, Stylish Weanlings for High Value Export Markets

Eurostar Index		ICBF Nov. 24		
Within Breed	Trait	Value	Rel.	Across Breed
★ ★ ★ ★ ★	Replacement Index	€84	34%	★ ★
★ ★ ★ ★ ★	Terminal Index	€151	35%	★ ★ ★ ★ ★
★ ★ ★ ★	Dairy Beef Index	€89	35%	★ ★ ★

Calving Difficulty			
Beef Cow Calving Difficulty	8.3%	57%	Breed avg: 9.82%
Beef Hfr Calving Difficulty	16.0%	44%	Breed avg: 17.78%

Expected Progeny Performance				
★ ★ ★ ★ ★	Docility	0.25	33%	★ ★ ★ ★ ★
★ ★ ★ ★	Carcass Weight (kg)	39.0	33%	★ ★ ★ ★ ★
★ ★ ★ ★ ★	Carcass Conformation	3.05	33%	★ ★ ★ ★ ★

Expected Daughter Performance				
	Daughter Calving Diff.	7.27	51%	
★ ★ ★ ★ ★	Daughter Milk (kg)	6.40	32%	★ ★ ★ ★ ★
★ ★	Daughter Calv. Interval	5.81	31%	★

Belgian Blue

Belgian Blue



BB7842



BB8544

MARADONA DU CHAMP DU MOULIN

GERONIMO VAN PERENHOF

BBLBELM000163678879 14-DEC-2018

Myostatin: 2 X NT821

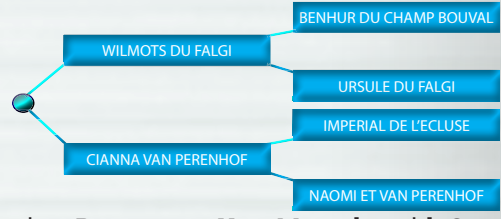
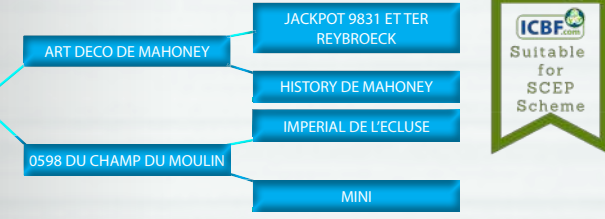
BBLBELM000413120666 25-DEC-2017

Myostatin: 2 X NT821



Progeny

Progeny



- Maradona is a Proven Easy Calver - Calves are Born Small and Develop Muscle Rapidly
- Transmits Serious Width, Power & Muscle to Progeny
- Ideal Choice to Produce Top Quality Export/Show-Type Weanlings Without Compromising on Calving Ease

- Geronimo Progeny are Very Muscular with Growth and Excellent Weight for Age
- Savage Muscle Pedigree Including Benhur X Imperial X Osbourne
- Use on Mature Suckler Cows

Eurostar Index		ICBF Nov. 24		
Within Breed	Trait	Value	Rel.	Across Breed
★★	Replacement Index	-€15	51%	★
★★★★★	Terminal Index	€155	61%	★★★★★
★★	Dairy Beef Index	€43	57%	★

Eurostar Index		ICBF Nov. 24		
Within Breed	Trait	Value	Rel.	Across Breed
★★	Replacement Index	€0	38%	★
★★★★★	Terminal Index	€134	40%	★★★★★
★★★	Dairy Beef Index	€68	38%	★★

Calving Difficulty			
Beef Cow Calving Difficulty	12.8%	93%	Breed avg: 9.82%
Beef Hfr Calving Difficulty	22.9%	52%	Breed avg: 17.78%

Calving Difficulty			
Beef Cow Calving Difficulty	9.8%	69%	Breed avg: 9.82%
Beef Hfr Calving Difficulty	18.2%	46%	Breed avg: 17.78%

Expected Progeny Performance				
★★★★★	Docility	0.22	76%	★★★★★
★★★★★	Carcass Weight (kg)	50.8	60%	★★★★★
★★★★★	Carcass Conformation	3.41	49%	★★★★★

Expected Progeny Performance				
★★★★★	Docility	0.21	46%	★★★★★
★★★★	Carcass Weight (kg)	37.5	34%	★★★★★
★★★★	Carcass Conformation	2.96	34%	★★★★★

Expected Daughter Performance				
	Daughter Calving Diff.	10.48	84%	
★★★★	Daughter Milk (kg)	5.30	36%	★★★★
★	Daughter Calv. Interval	8.15	38%	★

Expected Daughter Performance				
	Daughter Calving Diff.	9.10	63%	
★★★★	Daughter Milk (kg)	5.30	33%	★★★★
★	Daughter Calv. Interval	8.64	33%	★

Belgian Blue

Belgian Blue



BB1100

JUPITER DE MARTINPRE

BBLBELM000764606041 23-JUL-2021 Myostatin: 2 X NT821



Progeny



- Outcross Pedigree Sire for Ireland
- First Calves in Belgium Are Very Powerful with Terrific Growth Rates and Muscling
- Big, Long, Powerful Bull with Super Mobility, Length and Vigour

Eurostar Index		ICBF Nov. 24		
Within Breed	Trait	Value	Rel.	Across Breed
★★★★★	Replacement Index	€98	34%	★★★★
★★	Terminal Index	€108	36%	★★★★
★★★★	Dairy Beef Index	€100	34%	★★★★

Calving Difficulty			
Beef Cow Calving Difficulty	5.8%	54%	Breed avg: 9.82%
Beef Hfr Calving Difficulty	11.5%	40%	Breed avg: 17.78%

Expected Progeny Performance				
★★★★★	Docility	0.21	31%	★★★★★
★	Carcass Weight (kg)	24.9	31%	★★★★
★	Carcass Conformation	2.17	31%	★★★★★

Expected Daughter Performance				
	Daughter Calving Diff.	9.12	50%	
★★★★★	Daughter Milk (kg)	6.80	30%	★★★★★
★★★★★	Daughter Calv. Interval	1.81	30%	★



BB7659

CHARLESTON DES PEUPLIERS

BBLBELM000464390752 04-FEB-2019 Myostatin: 2 X NT821



Progeny



- Moderate Calving Difficulty White Belgian Blue Sire
- Producing Muscular, Stylish Progeny with Length and Super Colours
- Charleston will Produce Top Notch Weanlings with Fancy Colours Suitable for High Value Export Markets

Eurostar Index		ICBF Nov. 24		
Within Breed	Trait	Value	Rel.	Across Breed
★★★	Replacement Index	€26	44%	★
★	Terminal Index	€79	53%	★★★
★★★	Dairy Beef Index	€85	50%	★★★

Calving Difficulty			
Beef Cow Calving Difficulty	14.2%	78%	Breed avg: 9.82%
Beef Hfr Calving Difficulty	19.9%	42%	Breed avg: 17.78%

Expected Progeny Performance				
★★★★★	Docility	0.24	59%	★★★★★
★	Carcass Weight (kg)	28.6	54%	★★★★★
★	Carcass Conformation	2.43	45%	★★★★★

Expected Daughter Performance				
	Daughter Calving Diff.	10.19	71%	
★★★★★	Daughter Milk (kg)	6.20	32%	★★★★★
★★★★	Daughter Calv. Interval	3.70	33%	★

Belgian Blue

Belgian Blue

DRUMLINE S 1185

LM9577

LIMIRLM213862931185

10-OCT-2021

Myostatin: 2 X F94L

ICBF
Suitable
for
SCEP
Scheme



Sexed Female
Semen



- Weanling Producer
- Beef Finisher
- Easy Calving
- Maternal

Available in
spermvital
SEMEN WITH
DOUBLE LIFESPAN



Progeny



Eurostar Index		ICBF Nov. 24		
Within Breed	Trait	Value	Rel.	Across Breed
★★★★★	Replacement Index	€168	54%	★★★★★
★★★★★	Terminal Index	€184	58%	★★★★★
★★★★★	Dairy Beef Index	€184	58%	★★★★★
Calving Difficulty				
Beef Cow Calving Difficulty		3.5%	87%	Breed avg: 3.65%
Beef Hfr Calving Difficulty		7.2%	65%	Breed avg: 7.92%
Expected Progeny Performance				
★★★★★	Docility	0.14	49%	★★★★★
★★★★★	Carcass Weight (kg)	37.5	55%	★★★★★
★★★★★	Carcass Conformation	2.70	48%	★★★★★
Expected Daughter Performance				
	Daughter Calving Diff.	4.32	82%	
★★★★★	Daughter Milk (kg)	4.40	46%	★★★★★
★★	Daughter Calv. Interval	1.76	41%	★

#1 Terminal Limousin Standing in Irish AI

#1 Docility Limousin

#1 DBI Limousin Standing in Irish AI

- Drumline's First Calves are Easily Born
- Progeny are Tremendous, Displaying Real Style and Shape with Beautiful Heads
- No.1 Limousin Sire Standing in Irish A.I. on Terminal Index
- Terminal Index of €184
- Replacement Index of €168
- Daughter Milk +4.4Kgs
- Great All-Round Bull with Superb Indices
- **Sexed Female Semen Available**



Limousin

Limousin



LM5443

BROOKLANDS MARCO

LIMIRLM215581331640 13-APR-2017 Myostatin: 2 X F94L

♀ Sexed Female Semen



Available in **spermvital** SEMEN WITH DOUBLE LIFESPAN

Progeny



- Excellent Quality, Docile Calves with Shape & Weight for Age
- Replacement Index €159
- Terminal Index €163
- Marco is the Perfect Choice for Plainer Type Cows to Breed Quality Weanlings
- Sexed Female Semen Available

Eurostar Index			ICBF Nov. 24	
Within Breed	Trait	Value	Rel.	Across Breed
★★★★★	Replacement Index	€159	86%	★★★★★
★★★★★	Terminal Index	€163	93%	★★★★★
★★★★★	Dairy Beef Index	€160	92%	★★★★★

Calving Difficulty			
Beef Cow Calving Difficulty	3.9%	99%	Breed avg: 3.65%
Beef Hfr Calving Difficulty	7.5%	98%	Breed avg: 7.92%

Expected Progeny Performance				
★★★★★	Docility	0.00	99%	★★★
★★★★★	Carcass Weight (kg)	28.1	99%	★★★★★
★★★★★	Carcass Conformation	2.28	99%	★★★★★

Expected Daughter Performance				
	Daughter Calving Diff.	6.41	98%	
★★★	Daughter Milk (kg)	0.70	85%	★★
★★	Daughter Calv. Interval	2.21	60%	★

Limousin



LM7716

BROOKLANDS ROWAN

LIMIRLM215581351972 07-NOV-2020 Myostatin: 1 X F94L / 1 X Q204X



Progeny



- Average Calving Difficulty on Suckler Cows
- Use on Plainer Cows to Produce High Value Weanlings
- Progeny Inspected on Irish Suckler Farms are Very Impressive (Muscular with Super Style and Length)

Eurostar Index			ICBF Nov. 24	
Within Breed	Trait	Value	Rel.	Across Breed
★★★	Replacement Index	€106	60%	★★★★★
★★	Terminal Index	€104	69%	★★★★★
★★★★	Dairy Beef Index	€128	68%	★★★★★

Calving Difficulty			
Beef Cow Calving Difficulty	5.2%	93%	Breed avg: 3.65%
Beef Hfr Calving Difficulty	8.8%	82%	Breed avg: 7.92%

Expected Progeny Performance				
★★★★	Docility	-0.03	83%	★★
★★★	Carcass Weight (kg)	23.7	68%	★★★★★
★★★★★	Carcass Conformation	2.42	59%	★★★★★

Expected Daughter Performance				
	Daughter Calving Diff.	4.39	86%	
★★	Daughter Milk (kg)	-0.90	46%	★
★★★★	Daughter Calv. Interval	0.32	49%	★★

Limousin

SLIABH FELIM STERLING

LM8929

LIMIRLM219711160828

03-AUG-2021

Myostatin: 2 X F94L



Sexed Female Semen



Available in **spermvital** SEMEN WITH DOUBLE LIFESPAN

Progeny



- New Proven Easy Calving Superstar
- 5.8% C.D. on Beef Heifers
- 2.8% C.D. on Beef Cows
- Super Balanced Indices Across All Traits
- Replacement Index €149
- Terminal Index €147
- Daughter Milk +6.8 Kgs (Top 1% of The Breed)
- The Ideal Choice for Muscular Heifers
- **Sexed Female Semen Available**

Eurostar Index		ICBF Nov. 24		
Within Breed	Trait	Value	Rel.	Across Breed
★★★★★	Replacement Index	€149	57%	★★★★★
★★★★★	Terminal Index	€147	60%	★★★★★
★★★★★	Dairy Beef Index	€170	62%	★★★★★
Calving Difficulty				
Beef Cow Calving Difficulty		2.8%	93%	Breed avg: 3.65%
Beef Hfr Calving Difficulty		5.8%	76%	Breed avg: 7.92%
Expected Progeny Performance				
★	Docility	-0.12	77%	★
★★★★★	Carcass Weight (kg)	29.0	53%	★★★★★
★★★★★	Carcass Conformation	2.39	50%	★★★★★
Expected Daughter Performance				
	Daughter Calving Diff.	5.07	86%	
★★★★★	Daughter Milk (kg)	6.80	49%	★★★★★
★	Daughter Calv. Interval	2.77	46%	★



Limousin

Limousin



LM9948

CAVELANDS TIMBO

LIMIRLM215969790491 28-SEP-2022 Myostatin: 1 X F94L / 1 X Q204X



- Timbo is a Superb Addition to Dovea's Ever Growing Stud
- Super Pedigree Here - Sired by the Legendary Ewdenvale Ivor (LM2014) X Ampertaine Foreman X On Dit
- Huge Indices Across All Traits
- Replacement Index €181
- Terminal Index €159
- Test Sire

Eurostar Index		ICBF Nov. 24		
Within Breed	Trait	Value	Rel.	Across Breed
★★★★★	Replacement Index	€181	52%	★★★★★
★★★★★	Terminal Index	€159	54%	★★★★★
★★★★★	Dairy Beef Index	€163	51%	★★★★★

Calving Difficulty				
Beef Cow Calving Difficulty	3.2%	74%	Breed avg: 3.65%	
Beef Hfr Calving Difficulty	7.0%	64%	Breed avg: 7.92%	

Expected Progeny Performance				
★★★★★	Docility	0.03	57%	★★★
★★★★★	Carcass Weight (kg)	30.7	51%	★★★★★
★★★★★	Carcass Conformation	2.53	48%	★★★★★

Expected Daughter Performance				
	Daughter Calving Diff.	5.39	70%	
★★★★★	Daughter Milk (kg)	2.70	49%	★★★
★★★★	Daughter Calv. Interval	0.23	46%	★★

Limousin



LM1946

GAGGIN TIMELY

LIMIRLM214866180216 14-SEP-2022 Myostatin: 2 X F94L



- Timely is the No.1 Limousin Replacement Index Limousin Sire Standing in Irish A.I.
- Replacement Index €198
- Daughter Milk +6.9 Kgs (Top 1% of The Breed)
- Medium Sized, Soft Fleshing Bull
- Ideal Choice for Plainer Type Cows

Eurostar Index		ICBF Nov. 24		
Within Breed	Trait	Value	Rel.	Across Breed
★★★★★	Replacement Index	€198	50%	★★★★★
★★★★★	Terminal Index	€175	53%	★★★★★
★★★★★	Dairy Beef Index	€173	52%	★★★★★

Calving Difficulty				
Beef Cow Calving Difficulty	2.6%	68%	Breed avg: 3.65%	
Beef Hfr Calving Difficulty	5.9%	61%	Breed avg: 7.92%	

Expected Progeny Performance				
★★★★★	Docility	0.09	48%	★★★★★
★★★★★	Carcass Weight (kg)	30.8	53%	★★★★★
★★★★★	Carcass Conformation	2.46	47%	★★★★★

Expected Daughter Performance				
	Daughter Calving Diff.	4.42	65%	
★★★★★	Daughter Milk (kg)	6.90	46%	★★★★★
★★	Daughter Calv. Interval	2.34	40%	★

Limousin

BRONTEMOOR SALERING

LM9655

LIMGBRM126538602110

09-JUN-2021

Myostatin: 2 X F94L



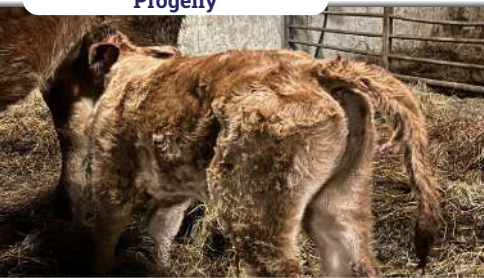
Sexed Female Semen



- Weanling Producer
- Beef Finisher
- Easy Calving
- Maternal

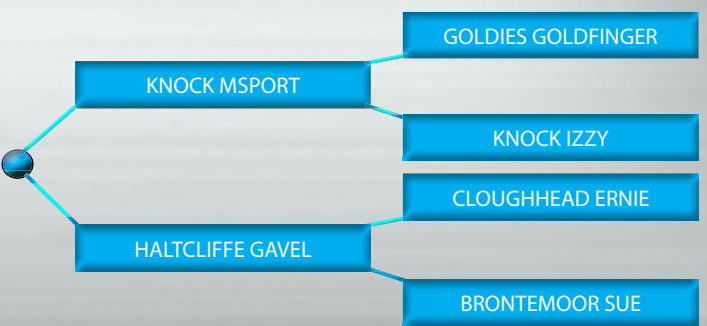


Progeny



Eurostar Index		ICBF Nov. 24		
Within Breed	Trait	Value	Rel.	Across Breed
★★★★★	Replacement Index	€131	39%	★★★★★
★★★★★	Terminal Index	€161	42%	★★★★★
★★★★★	Dairy Beef Index	€143	40%	★★★★★
Calving Difficulty				
Beef Cow Calving Difficulty		2.8%	70%	Breed avg: 3.65%
Beef Hfr Calving Difficulty		6.4%	48%	Breed avg: 7.92%
Expected Progeny Performance				
★★★★★	Docility	0.00	34%	★★★
★★★★★	Carcass Weight (kg)	30.6	34%	★★★★★
★★★★★	Carcass Conformation	2.33	34%	★★★★★
Expected Daughter Performance				
	Daughter Calving Diff.	4.31	65%	
★★★★★	Daughter Milk (kg)	3.30	34%	★★★
★★	Daughter Calv. Interval	2.48	33%	★

- Salering is an Exceptional Outcross Sire for Dovea
- First Calves are Impressive Combining Great Size, Length and Shape
- Pedigree Female Siblings are Performing Well in the Brontemoor Herd with Excellent Calving Ability and Milk
- Use Salering to Breed Functional Females
- **Sexed Female Semen Available**



Limousin

Limousin



LM7713

BIRCHPARK RUFUS

LIMIRLM225564150178 29-JUN-2020

Myostatin: 2 X F94L

♀ Sexed Female Semen



Available in **spermvital** SEMEN WITH DOUBLE LIFESPAN

Progeny



EBY

ELDERBERRY GALAHAD

LIMGBRM000BQH11-020 26-SEP-2011

Myostatin: 2 X F94L



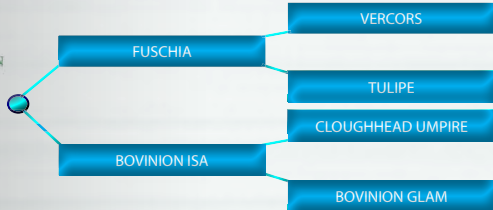
Progeny



Champion at Cootehill Fatstock 2024

Breeding Heifer Champion at Markethill 2024

Junior Champion Milford 2024



- Easy Calving Son of the Renowned 'Fuschia'
- Rufus Calves are Very Long, Fine Boned with Superb Muscling
- Outcross Pedigree to all Kaprico Eravelle and Tomschoice Lexicon Bloodlines
- **Sexed Female Semen Available**

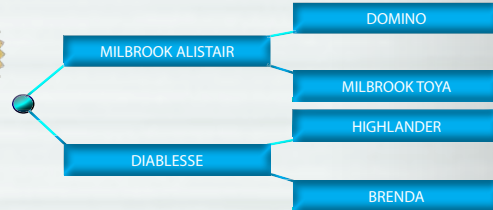
Eurostar Index			ICBF Nov. 24	
Within Breed	Trait	Value	Rel.	Across Breed
★★	Replacement Index	€77	58%	★★
★★★	Terminal Index	€123	67%	★★★★
★★★	Dairy Beef Index	€114	66%	★★★★★

Calving Difficulty				
Beef Cow Calving Difficulty	3.7%	95%	Breed avg: 3.65%	
Beef Hfr Calving Difficulty	8.1%	81%	Breed avg: 7.92%	

Expected Progeny Performance				
★★★	Docility	-0.06	89%	★
★★	Carcass Weight (kg)	22.3	66%	★★★★
★★★★	Carcass Conformation	2.36	56%	★★★★★

Expected Daughter Performance				
	Daughter Calving Diff.	5.20	90%	
★	Daughter Milk (kg)	-2.60	47%	★
★★★	Daughter Calv. Interval	1.36	42%	★

Limousin



- The Most Consistent Limousin Bull Ever in Irish AI
- A True Legend Combining All of the Great Attributes of the Limousin Breed
- Incredible Calving Ease and Quality Combined in the One Package
- Renowned for Use on Muscular Type Heifers

Eurostar Index			ICBF Nov. 24	
Within Breed	Trait	Value	Rel.	Across Breed
★★★★	Replacement Index	€120	98%	★★★★★
★★	Terminal Index	€109	96%	★★★★
★★★★★	Dairy Beef Index	€134	96%	★★★★★

Calving Difficulty				
Beef Cow Calving Difficulty	3.3%	99%	Breed avg: 3.65%	
Beef Hfr Calving Difficulty	7.0%	99%	Breed avg: 7.92%	

Expected Progeny Performance				
★★★	Docility	-0.06	99%	★
★	Carcass Weight (kg)	19.1	99%	★★★
★★	Carcass Conformation	2.13	99%	★★★★★

Expected Daughter Performance				
	Daughter Calving Diff.	5.10	99%	
★★	Daughter Milk (kg)	-0.70	99%	★
★★★★★	Daughter Calv. Interval	-0.97	99%	★★★

Limousin

CLADDAGH MCCABE (ET)

LM6529

LIMIRLM121756750030

12-SEP-2017

Myostatin: 2 X Q204X



Sexed Female Semen



Progeny



Overall Limousin Champion Carrick 2024

NI Record Holder - 25,000gns at Red Ladies '24

£16,500 at RUAS & Overall Calf Champion '24

£12,000 at Stranorlar Elite Sale 2024

£7,700 at Carrick Winter Fair 2024

Eurostar Index		ICBF Nov. 24		
Within Breed	Trait	Value	Rel.	Across Breed
★★★	Replacement Index	€103	72%	★★★
★★★★★	Terminal Index	€138	85%	★★★★★
★	Dairy Beef Index	€47	80%	★



- The Most Impressive Show Calf Producing Bull to Date
- Beautiful, Stylish, Muscular Progeny on the Commercial Show Circuit
- Transmitting Serious Shape, Style and Quality to His Progeny
- Carries Two Copies of the Q204X
- Average Calving Difficulty on Suckler Cows
- **Sexed Female Semen Available**

Calving Difficulty			
Beef Cow Calving Difficulty	8.5%	97%	Breed avg: 9.82%
Beef Hfr Calving Difficulty	16.2%	78%	Breed avg: 17.78%

Expected Progeny Performance				
★★★★★	Docility	0.01	95%	★★★
★★★★★	Carcass Weight (kg)	35.4	93%	★★★★★
★★★★★	Carcass Conformation	3.01	92%	★★★★★

Expected Daughter Performance				
	Daughter Calving Diff.	3.37	93%	
★★★	Daughter Milk (kg)	-0.10	55%	★★
★★	Daughter Calv. Interval	1.95	52%	★



Limousin

Limousin



LM9622

GLENFORD SAM

LIMIRLM226623460261 15-AUG-2021 Myostatin: 2 X F94L



LM4745

ERNEVALLEY MADISON ET

LIMIRLM216940250378 05-JUL-2017 Myostatin: 1 X F94L / 1 X Q204X



Progeny



£6,600 at 410kg - Clogher Mart Oct '24



- Stylish Muscular Limousin Sire with an Exceptional Pedigree
- Mereside Goldolphin X Ampertaine Elgin X Wilodge Vantastic
- Carries Two Copies of the F94L Gene
- Use Sam to Produce Top Quality Muscular Weanlings

- Madison is Consistently Producing Heavily Muscled Weanlings with Excellent Weight for Age
- Trait Leader on Carcass Indices
- Carcass Weight +32.4Kgs
- Carcass Conformation +2.68
- Average Calving Difficulty on Mature Suckler Cows

Eurostar Index		ICBF Nov. 24		
Within Breed	Trait	Value	Rel.	Across Breed
★ ★ ★	Replacement Index	€103	47%	★ ★ ★
★ ★ ★ ★	Terminal Index	€131	49%	★ ★ ★ ★ ★
★ ★ ★ ★	Dairy Beef Index	€124	48%	★ ★ ★ ★ ★

Eurostar Index		ICBF Nov. 24		
Within Breed	Trait	Value	Rel.	Across Breed
★	Replacement Index	€26	82%	★
★ ★	Terminal Index	€112	90%	★ ★ ★ ★
★	Dairy Beef Index	€77	85%	★ ★

Calving Difficulty			
Beef Cow Calving Difficulty	4.0%	70%	Breed avg: 3.65%
Beef Hfr Calving Difficulty	8.2%	66%	Breed avg: 7.92%

Calving Difficulty			
Beef Cow Calving Difficulty	9.2%	99%	Breed avg: 3.65%
Beef Hfr Calving Difficulty	15.9%	90%	Breed avg: 7.92%

Expected Progeny Performance				
★ ★ ★ ★ ★	Docility	0.00	46%	★ ★ ★
★ ★ ★	Carcass Weight (kg)	24.8	45%	★ ★ ★ ★
★ ★ ★ ★ ★	Carcass Conformation	2.44	46%	★ ★ ★ ★ ★

Expected Progeny Performance				
★	Docility	-0.10	98%	★
★ ★ ★ ★ ★	Carcass Weight (kg)	32.4	99%	★ ★ ★ ★ ★
★ ★ ★ ★ ★	Carcass Conformation	2.68	99%	★ ★ ★ ★ ★

Expected Daughter Performance				
	Daughter Calving Diff.	3.55	67%	
★	Daughter Milk (kg)	-2.80	45%	★
★ ★	Daughter Calv. Interval	2.38	39%	★

Expected Daughter Performance				
	Daughter Calving Diff.	5.21	96%	
★	Daughter Milk (kg)	-5.90	77%	★
★ ★ ★ ★	Daughter Calv. Interval	0.38	60%	★ ★

Limousin

Limousin



LM2188

WILODGE JOSKINS

LIMGBRM00WEY14-1306 15-JAN-2014 Myostatin: 1 X F94L / 1 X Q204X



€5,000 at Carrick Winter Fair 2024



- Joskins Continues to Produce Outstanding Show Type Progeny
- Daughters are Breeding Very Well in Irish Suckler Herds
- Carries One Copy of the Q204X Variant

Eurostar Index		ICBF Nov. 24		
Within Breed	Trait	Value	Rel.	Across Breed
★	Replacement Index	€6	94%	★
★	Terminal Index	€99	92%	★★★
★	Dairy Beef Index	-€7	89%	★

Calving Difficulty				
Beef Cow Calving Difficulty	12.8%	99%	Breed avg: 3.65%	
Beef Hfr Calving Difficulty	19.7%	92%	Breed avg: 7.92%	

Expected Progeny Performance				
★★★	Docility	-0.04	99%	★★
★★★★★	Carcass Weight (kg)	32.8	99%	★★★★★
★★★★★	Carcass Conformation	2.72	99%	★★★★★

Expected Daughter Performance				
	Daughter Calving Diff.	2.69	98%	
★	Daughter Milk (kg)	-5.70	97%	★
★★	Daughter Calv. Interval	2.04	88%	★

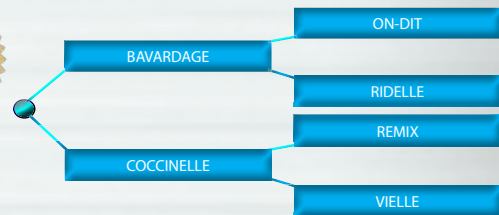
Limousin



LM5887

IVANTONOV

LIMFRAM008749281004 10-NOV-2013 Myostatin: 2 X F94L



- Incredibly Easy Calving Proven Bavardage Son
- 3.5% C.D On Beef Heifers
- Breeding Really Smart, Shapely Calves That Ooze Style
- Ivantonov is the Perfect Choice for Extreme Muscle Heifers

Eurostar Index		ICBF Nov. 24		
Within Breed	Trait	Value	Rel.	Across Breed
★★★★★	Replacement Index	€118	68%	★★★★★
★★★	Terminal Index	€122	79%	★★★★★
★★★★★	Dairy Beef Index	€139	74%	★★★★★

Calving Difficulty				
Beef Cow Calving Difficulty	0.5%	93%	Breed avg: 3.65%	
Beef Hfr Calving Difficulty	3.5%	86%	Breed avg: 7.92%	

Expected Progeny Performance				
★	Docility	-0.10	84%	★
★	Carcass Weight (kg)	19.5	86%	★★★
★★★★★	Carcass Conformation	2.33	83%	★★★★★

Expected Daughter Performance				
	Daughter Calving Diff.	4.40	89%	
★★★★★	Daughter Milk (kg)	2.80	64%	★★★
★	Daughter Calv. Interval	4.89	48%	★

Limousin

KILVILCORRIS TIM

CH1287

CHAIRLM217889871312

19-OCT-2022

Myostatin: 2 X F94L

ICBF
Suitable
for
SCEP
Scheme

NEW



Eurostar Index		ICBF Nov. 24		
Within Breed	Trait	Value	Rel.	Across Breed
★★★★★	Replacement Index	€103	50%	★★★
★★★	Terminal Index	€129	51%	★★★★★
★★	Dairy Beef Index	€77	49%	★★
Calving Difficulty				
Beef Cow Calving Difficulty		4.4%	69%	Breed avg: 5.11%
Beef Hfr Calving Difficulty		9.9%	62%	Breed avg: 10.39%
Expected Progeny Performance				
★★★	Docility	0.04	47%	★★★★★
★★★	Carcass Weight (kg)	34.0	46%	★★★★★
★★★	Carcass Conformation	1.89	46%	★★★★★
Expected Daughter Performance				
	Daughter Calving Diff.	4.63	66%	
★★★★★	Daughter Milk (kg)	-1.50	47%	★
★★★★★	Daughter Calv. Interval	-2.68	46%	★★★★★

- What an Example of the Charolais Breed
- Tim is Extremely Long with a Great Wide Topline, Loads of Muscle and a Beautiful Head
- Sired By Pirate from a Blelack Digger x Doonally New Dam
- Carries Two Copies of the F94L Myostatin Variant



Charolais

Charolais

GOODMOOVE USHER ET

CH2554

CHAIRLM227106910050

07-JUN-2023

Myostatin: 1 X Q204X

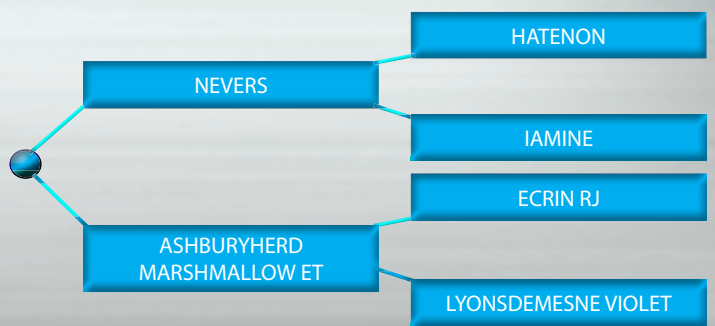


NEW



Eurostar Index		ICBF Nov. 24		
Within Breed	Trait	Value	Rel.	Across Breed
★	Replacement Index	€22	41%	★
★★★★★	Terminal Index	€135	43%	★★★★★
★★★★★	Dairy Beef Index	€127	40%	★★★★★
Calving Difficulty				
Beef Cow Calving Difficulty		5.9%	60%	Breed avg: 5.11%
Beef Hfr Calving Difficulty		10.5%	47%	Breed avg: 10.39%
Expected Progeny Performance				
★★★★★	Docility	0.08	37%	★★★★★
★★★★★	Carcass Weight (kg)	40.8	40%	★★★★★
★★	Carcass Conformation	1.78	39%	★★★★★
Expected Daughter Performance				
	Daughter Calving Diff.	4.90	56%	
★	Daughter Milk (kg)	-8.20	38%	★
★★★	Daughter Calv. Interval	-1.14	34%	★★★

- Exceptional New Outcross Charolais Sire for Dovea's Beef Stud
- Usher Stood Reserve Senior Champion at The Irish Charolais Christmas Cracker & Sold for €14,500
- Exceptional, Stylish Bull with Medium Bone, Superb Muscling and Natural Width
- Sired by the New French 'Nevers' from a Cow with Serious Old Genetics Including Ecrin, Lyonsdemense Tzar and Erudit



Charolais

Charolais



CH4160

POTTLEREAGH MARK

CHAIRLM121187090303 26-JAN-2016 Myostatin: Free



Available in **spermvital**
SEMEN WITH
DOUBLE LIFESPAN



Progeny

#1 Daughter Calving Interval Charolais



ICBF.com
Suitable for SCEP Scheme

- Well Proven, Easy Calving Sire
- 4.5% C.D On Beef Cows
- Progeny are Performing Well - Being Easily Born with Excellent Performance and Weight for Age
- Ideal Choice for Well Grown Pedigree Maiden Heifers or Second Calving Suckler Cows

Eurostar Index		ICBF Nov. 24		
Within Breed	Trait	Value	Rel.	Across Breed
★★★★★	Replacement Index	€133	94%	★★★★★
★★★	Terminal Index	€129	92%	★★★★★
★★★	Dairy Beef Index	€89	89%	★★★

Calving Difficulty			
Beef Cow Calving Difficulty	4.5%	99%	Breed avg: 5.11%
Beef Hfr Calving Difficulty	9.5%	96%	Breed avg: 10.39%

Expected Progeny Performance				
★	Docility	-0.01	99%	★★
★★★	Carcass Weight (kg)	34.5	99%	★★★★★
★★★★	Carcass Conformation	2.00	99%	★★★★★

Expected Daughter Performance				
	Daughter Calving Diff.	3.28	98%	
★★	Daughter Milk (kg)	-4.80	96%	★
★★★★★	Daughter Calv. Interval	-7.68	84%	★★★★★



CH6292

KNOCKMAHON OPEL

CHAIRLM213018992296 11-DEC-2018 Myostatin: Free



Available in **spermvital**
SEMEN WITH
DOUBLE LIFESPAN



Progeny

#1 Proven Gestation Charolais



ICBF.com
Suitable for SCEP Scheme

- Proven Easy Calving, Short Gestations Charolais Sire
- 5.2% C.D on Beef Cows
- 284 Day Gestation Length (Top 1% of The Breed)
- Son of the Famous Easy Calving 'Bivouac' from a Dovea Gin Tonic Dam
- Opel is the Perfect Choice for Smaller Cows

Eurostar Index		ICBF Nov. 24		
Within Breed	Trait	Value	Rel.	Across Breed
★★★★	Replacement Index	€93	68%	★★★
★★	Terminal Index	€118	82%	★★★★
★★★★★	Dairy Beef Index	€132	82%	★★★★★

Calving Difficulty			
Beef Cow Calving Difficulty	5.2%	95%	Breed avg: 5.11%
Beef Hfr Calving Difficulty	8.9%	65%	Breed avg: 10.39%

Expected Progeny Performance				
★★★★★	Docility	0.13	90%	★★★★★
★	Carcass Weight (kg)	29.8	88%	★★★★★
★	Carcass Conformation	1.66	85%	★★★★

Expected Daughter Performance				
	Daughter Calving Diff.	4.55	89%	
★★★	Daughter Milk (kg)	-3.00	49%	★
★★	Daughter Calv. Interval	-0.30	51%	★★★

Charolais

Charolais

CLENAGH SUPERIOR ET

CH8968

CHAIRLM222988920633

21-SEP-2021

Myostatin: 1 X F94L / 1 X Q204X



Progeny



Eurostar Index		ICBF Nov. 24		
Within Breed	Trait	Value	Rel.	Across Breed
★	Replacement Index	-€17	56%	★
★★★★★	Terminal Index	€135	58%	★★★★★
★★★★★	Dairy Beef Index	€122	56%	★★★★★
Calving Difficulty				
Beef Cow Calving Difficulty		10.2%	91%	Breed avg: 5.11%
Beef Hfr Calving Difficulty		15.5%	63%	Breed avg: 10.39%
Expected Progeny Performance				
★	Docility	-0.10	61%	★
★★★★★	Carcass Weight (kg)	46.0	51%	★★★★★
★★★★★	Carcass Conformation	2.59	50%	★★★★★
Expected Daughter Performance				
	Daughter Calving Diff.	3.60	85%	
★	Daughter Milk (kg)	-7.80	50%	★
★★★	Daughter Calv. Interval	-0.84	47%	★★★



- Superior is our New Superstar Weanling Specialist
- Superb Calves with Bone, Muscle and Shape
- Progeny Commanding Top Prices at Weanling Sales Throughout Autumn 24
- Progeny are Easily Born from Mature Suckler Cows
- Use Superior on Plainer Cows to Produce Top Notch Weanlings



Charolais

Charolais



CH8541

CATTANVIEW SUPREME

CHAIRLM225644960072 30-APR-2021 Myostatin: 1 X Q204X



Available in **spermvital** SEMEN WITH DOUBLE LIFESPAN

Progeny



- Supreme is Quickly Proving Himself to be an All-Round Suckler Sire
- Long, Muscular Calves that are Easily Born & Develop Well
- Massive Terminal Index of €162 Combined with a Carcass Weight of +47 Kgs
- Use Supreme on Plainer Type Cows with Confidence

Eurostar Index		ICBF Nov. 24		
Within Breed	Trait	Value	Rel.	Across Breed
★★★★★	Replacement Index	€129	57%	★★★★★
★★★★★	Terminal Index	€162	63%	★★★★★
★★★	Dairy Beef Index	€97	63%	★★★★

Calving Difficulty			
Beef Cow Calving Difficulty	6.7%	96%	Breed avg: 5.11%
Beef Hfr Calving Difficulty	12.1%	68%	Breed avg: 10.39%

Expected Progeny Performance				
★★★★	Docility	0.07	85%	★★★★
★★★★★	Carcass Weight (kg)	47.0	56%	★★★★★
★★★★★	Carcass Conformation	2.40	50%	★★★★★

Expected Daughter Performance				
	Daughter Calving Diff.	4.27	90%	
★★★★	Daughter Milk (kg)	-1.50	46%	★
★★★★★	Daughter Calv. Interval	-2.78	48%	★★★★★

Charolais



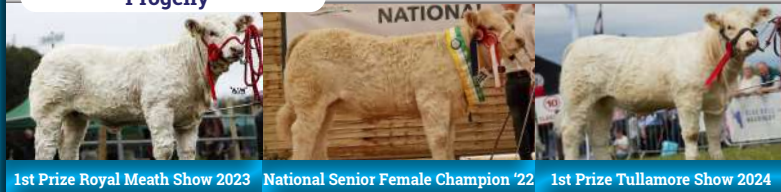
CH5827

OCELOT

CHAFRAM008574756142 04-MAR-2018 Myostatin: 1 X F94L



Progeny



1st Prize Royal Meath Show 2023 National Senior Female Champion '22 1st Prize Tullamore Show 2024



- Ocelot Progeny are Very Impressive
- Progeny Exhibit Bone, Power, Length and Super Breed Character
- Average Calving Difficulty at 6.1% on Beef Cows
- Use on Muscular Cows to Increase Size and Length

Eurostar Index		ICBF Nov. 24		
Within Breed	Trait	Value	Rel.	Across Breed
★★	Replacement Index	€56	60%	★
★★	Terminal Index	€117	79%	★★★★
★★★	Dairy Beef Index	€86	72%	★★★

Calving Difficulty			
Beef Cow Calving Difficulty	6.1%	94%	Breed avg: 5.11%
Beef Hfr Calving Difficulty	11.9%	54%	Breed avg: 10.39%

Expected Progeny Performance				
★★★	Docility	0.03	79%	★★★
★★★	Carcass Weight (kg)	36.5	90%	★★★★★
★★★	Carcass Conformation	1.96	87%	★★★★★

Expected Daughter Performance				
	Daughter Calving Diff.	4.02	85%	
★★	Daughter Milk (kg)	-4.90	41%	★
★★★★★	Daughter Calv. Interval	-3.08	40%	★★★★★

Charolais



CH2304

CLENAGH JASPER 2

CHAIRLM131188160452 05-SEP-2014

Myostatin: Free



Progeny



Reserve Senior Champion at Christmas Cracker '23 at €8,400

Overall Continental Champion at Stars of the Future Show Stirling '24



- Exceptional Weanling Producer
- Progeny Display Width, Muscling and Quality
- Average Calving Difficulty
- Use Jasper to Produce High Value Quality Weanlings

Eurostar Index		ICBF Nov. 24		
Within Breed	Trait	Value	Rel.	Across Breed
★ ★ ★	Replacement Index	€65	93%	★ ★
★	Terminal Index	€99	92%	★ ★ ★
★ ★ ★	Dairy Beef Index	€95	88%	★ ★ ★

Calving Difficulty			
Beef Cow Calving Difficulty	7.0%	99%	Breed avg: 5.11%
Beef Hfr Calving Difficulty	11.8%	89%	Breed avg: 10.39%

Expected Progeny Performance				
★ ★	Docility	0.02	99%	★ ★ ★
★	Carcass Weight (kg)	25.9	99%	★ ★ ★ ★ ★
★ ★ ★ ★	Carcass Conformation	2.08	99%	★ ★ ★ ★ ★

Expected Daughter Performance				
	Daughter Calving Diff.	2.95	97%	
★	Daughter Milk (kg)	-7.40	95%	★
★ ★ ★ ★ ★	Daughter Calv. Interval	-2.99	82%	★ ★ ★ ★ ★

Charolais



CH8535

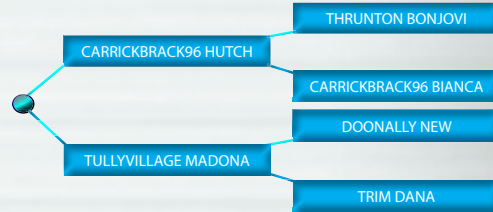
TULLYVILLAGE SHANE

CHAIRLM219297570601 06-APR-2021

Myostatin: 1 X F94L / 1 X Q204X



Progeny



- Shane is one of Dovea's Most Consistent Charolais Sires to Add Muscle
- Average Calving Difficulty of 10.3% on Suckler Cows
- Excels on All Carcass Traits
- Carcass Weight +42.7 Kgs (Top 1% Across All Breeds)
- Carcass Conformation +2.35 (Top 2% Across All Breeds)
- Weanlings Commanded Exceptional Prices Throughout '24

Eurostar Index		ICBF Nov. 24		
Within Breed	Trait	Value	Rel.	Across Breed
★	Replacement Index	-€22	54%	★
★ ★	Terminal Index	€120	57%	★ ★ ★ ★
★	Dairy Beef Index	€57	55%	★

Calving Difficulty			
Beef Cow Calving Difficulty	10.3%	89%	Breed avg: 5.11%
Beef Hfr Calving Difficulty	16.9%	61%	Breed avg: 10.39%

Expected Progeny Performance				
★ ★ ★ ★ ★	Docility	0.15	73%	★ ★ ★ ★ ★
★ ★ ★ ★ ★	Carcass Weight (kg)	42.7	51%	★ ★ ★ ★ ★
★ ★ ★ ★ ★	Carcass Conformation	2.35	49%	★ ★ ★ ★ ★

Expected Daughter Performance				
	Daughter Calving Diff.	3.73	83%	
★	Daughter Milk (kg)	-7.40	49%	★
★	Daughter Calv. Interval	2.14	46%	★

Charolais



CH9862

FURY TOTAL

CHAGBRM958073610713 20-SEP-2022 Myostatin: 1 X Q204X



CH8971

CLOONGLASNA11 SOCKS ET

CHAIRLM218934310332 02-NOV-2021 Myostatin: 2 X F94L



Progeny



- Long, Powerful Bull with a Super Topline & Natural Muscling
- Super Pedigree Here
- CF52 X Fury Action X Gower Bling Bling
- First Calves Due Spring '25

Eurostar Index		ICBF Nov. 24		
Within Breed	Trait	Value	Rel.	Across Breed
★	Replacement Index	-€1	49%	★
★	Terminal Index	€107	50%	★★★★★
★★★★	Dairy Beef Index	€107	48%	★★★★★

Calving Difficulty			
Beef Cow Calving Difficulty	6.9%	69%	Breed avg: 5.11%
Beef Hfr Calving Difficulty	11.4%	61%	Breed avg: 10.39%

Expected Progeny Performance				
★★★★	Docility	0.06	45%	★★★★★
★	Carcass Weight (kg)	28.2	46%	★★★★★
★★	Carcass Conformation	1.82	45%	★★★★★

Expected Daughter Performance				
	Daughter Calving Diff.	3.82	66%	
★	Daughter Milk (kg)	-6.20	46%	★
★	Daughter Calv. Interval	2.77	45%	★



- Socks is Proving Himself as an Easy Calving Choice
- Only 6.1% Calving Difficulty at 92% Reliability
- Progeny are Very Growthy With Excellent Weight Gain and Performance
- Use Socks on Thicker, More Muscular Cows

Eurostar Index		ICBF Nov. 24		
Within Breed	Trait	Value	Rel.	Across Breed
★★★	Replacement Index	€68	53%	★★
★★	Terminal Index	€111	56%	★★★★★
★	Dairy Beef Index	€44	53%	★

Calving Difficulty			
Beef Cow Calving Difficulty	6.1%	92%	Breed avg: 5.11%
Beef Hfr Calving Difficulty	11.8%	59%	Breed avg: 10.39%

Expected Progeny Performance				
★	Docility	-0.03	64%	★★
★★★	Carcass Weight (kg)	34.5	49%	★★★★★
★★★	Carcass Conformation	1.93	49%	★★★★★

Expected Daughter Performance				
	Daughter Calving Diff.	3.0	85%	
★★★	Daughter Milk (kg)	-3.00	45%	★
★★	Daughter Calv. Interval	-0.55	43%	★★★

BUD ORPHEUS

CH5932

CHAIRLM226363070020

23-SEP-2018

Myostatin: 1 X F94L / 1 X Q204X



Progeny



Champion at Clifden Weanling Show & Sale 2023

Eurostar Index		ICBF Nov. 24		
Within Breed	Trait	Value	Rel.	Across Breed
★	Replacement Index	€26	78%	★
★★★★★	Terminal Index	€134	92%	★★★★★
★★★★★	Dairy Beef Index	€107	86%	★★★★★
Calving Difficulty				
Beef Cow Calving Difficulty		11.1%	98%	Breed avg: 5.11%
Beef Hfr Calving Difficulty		16.2%	74%	Breed avg: 10.39%
Expected Progeny Performance				
★★★★★	Docility	0.11	98%	★★★★★
★★★★★	Carcass Weight (kg)	46.3	99%	★★★★★
★★★★★	Carcass Conformation	2.10	99%	★★★★★
Expected Daughter Performance				
	Daughter Calving Diff.	3.86	94%	
★	Daughter Milk (kg)	-9.10	63%	★
★	Daughter Calv. Interval	1.44	56%	★

- Orpheus Progeny are Extremely Muscular with Exceptional Power and Weight for Age
- Weanlings are Commanding Exceptional Prices Throughout 2024
- Use on Mature Suckler Cows to Maximise Weanling Revenue



Charolais

Charolais



CH5872

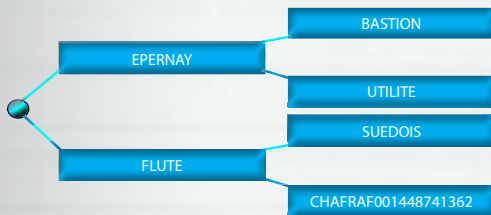
LEBONVO

CHAFRAM001423175165 09-NOV-2015

Myostatin: Free



Progeny



- Proven High Index French Sire
- €155 Terminal Index
- 5.6% C.D on Beef Cows
- +42.3 Kgs Carcass Weight
- +2.70Kgs Daughter Milk
- Outcross Pedigree

Eurostar Index		ICBF Nov. 24		
Within Breed	Trait	Value	Rel.	Across Breed
★★★★★	Replacement Index	€115	58%	★★★★★
★★★★★	Terminal Index	€155	69%	★★★★★
★★★★	Dairy Beef Index	€93	66%	★★★★

Calving Difficulty			
Beef Cow Calving Difficulty	5.6%	93%	Breed avg: 5.11%
Beef Hfr Calving Difficulty	11.5%	45%	Breed avg: 10.39%

Expected Progeny Performance				
★★	Docility	0.02	64%	★★★
★★★★★	Carcass Weight (kg)	42.3	76%	★★★★★
★	Carcass Conformation	1.66	73%	★★★★

Expected Daughter Performance				
	Daughter Calving Diff.	3.08	81%	
★★★★★	Daughter Milk (kg)	2.70	68%	★★★
★★★★	Daughter Calv. Interval	-1.69	34%	★★★★



CH7830

MAGIQUE

CHAFRAM008843788346 06-NOV-2016

Myostatin: 2 X F94L



Progeny



- First Calves Born in Ireland are Very Impressive
- Well Proven Sire
- €132 Terminal Index
- +48.7 Kgs Carcass Weight
- Muscular Progeny with Excellent Performance and Weight for Age

Eurostar Index		ICBF Nov. 24		
Within Breed	Trait	Value	Rel.	Across Breed
★★	Replacement Index	€43	54%	★
★★★	Terminal Index	€132	62%	★★★★★
★★	Dairy Beef Index	€79	56%	★★

Calving Difficulty			
Beef Cow Calving Difficulty	7.8%	91%	Breed avg: 5.11%
Beef Hfr Calving Difficulty	13.8%	46%	Breed avg: 10.39%

Expected Progeny Performance				
★	Docility	-0.02	36%	★★
★★★★★	Carcass Weight (kg)	48.7	69%	★★★★★
★	Carcass Conformation	1.63	66%	★★★★

Expected Daughter Performance				
	Daughter Calving Diff.	2.15	82%	
★★★★★	Daughter Milk (kg)	0.40	65%	★★
★★	Daughter Calv. Interval	-0.11	33%	★★

TOMBAPIK

CH4202

CHAFRAM006464149921

18-DEC-2002

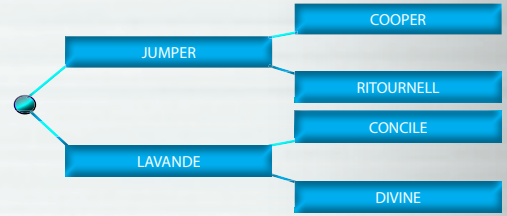
Myostatin: Free



- Proven Replacement Bull
- €103 Replacement Index
- +8.1 Kgs Daughter Milk
- Medium Sized, Hard-Working Cows

Eurostar Index		ICBF Nov. 24		
Within Breed	Trait	Value	Rel.	Across Breed
★★★★★	Replacement Index	€103	92%	★★★★
*	Terminal Index	€105	92%	★★★★
**	Dairy Beef Index	€70	85%	**
Calving Difficulty				
Beef Cow Calving Difficulty		5.7%	99%	Breed avg: 5.11%
Beef Hfr Calving Difficulty		12.4%	89%	Breed avg: 10.39%

Expected Progeny Performance				
★★★★	Docility	0.06	98%	★★★★
★★★★	Carcass Weight (kg)	38.3	99%	★★★★★
*	Carc Conformation	1.65	99%	★★★★
Expected Daughter Performance				
	Daughter Calv. Diff.	4.67	97%	
★★★★★	Daughter Milk (kg)	8.10	95%	★★★★★
★★★	Dtr Calv. Interval	-0.93	81%	★★★



HARESTONE HERCULES

S2163

CHAGBRM521516701424

11-APR-2012

Myostatin: 1 X F94L / 1 X Q204X



2023 Balmoral Show Reserve Junior Female Champion



2023 Balmoral Show Reserve Supreme Champion



- Daughters are Top Breeders with Milk & Calving Ability
- Super Indices on All Traits both Terminal & Replacement
- Ideal Choice for Smaller, Muscly Type Pedigree Cows

Eurostar Index		ICBF Nov. 24		
Within Breed	Trait	Value	Rel.	Across Breed
**	Replacement Index	€41	71%	*
*	Terminal Index	€94	80%	★★★
*	Dairy Beef Index	€1	74%	*
Calving Difficulty				
Beef Cow Calving Difficulty		11.0%	93%	Breed avg: 5.11%
Beef Hfr Calving Difficulty		17.3%	45%	Breed avg: 10.39%

Expected Progeny Performance				
★★★	Docility	0.04	80%	★★★★
★★★★★	Carcass Weight (kg)	41.8	91%	★★★★★
★★★	Carc Conformation	1.95	89%	★★★★★
Expected Daughter Performance				
	Daughter Calv. Diff.	4.98	83%	
★★★★★	Daughter Milk (kg)	7.80	58%	★★★★★
*	Dtr Calv. Interval	2.10	44%	*



INVERLOCHY FERDIE

S1381

CHAGBRM522636100781

14-AUG-2010

Myostatin: 1 X F94L / 1 X Q204X



- Muscle, Length & Style in the One Package
- Pedigree Daughters are Breeding Well
- Use Ferdie on Plainer Cows for Best Result

Eurostar Index		ICBF Nov. 24		
Within Breed	Trait	Value	Rel.	Across Breed
*	Replacement Index	-€52	89%	*
**	Terminal Index	€113	89%	★★★★
*	Dairy Beef Index	€4	81%	*
Calving Difficulty				
Beef Cow Calving Difficulty		11.0%	98%	Breed avg: 5.11%
Beef Hfr Calving Difficulty		17.8%	84%	Breed avg: 10.39%

Expected Progeny Performance				
**	Docility	0.01	96%	★★★
★★★★★	Carcass Weight (kg)	43.3	98%	★★★★★
★★★★★	Carc Conformation	2.42	98%	★★★★★
Expected Daughter Performance				
	Daughter Calv. Diff.	2.15	95%	
★★★★★	Daughter Milk (kg)	1.60	91%	★★
*	Dtr Calv. Interval	8.62	74%	*



Charolais

Charolais



HE1503

CROWENSTOWN HANLEY

HERIRLM223810290032 17-MAR-2023

Myostatin: Free

NEW



Sexed Male Semen



Reserve Supreme Male Champion at the National Hereford Calf Show 2023



HE7545

SKEHANORE FRUITFUL

HERIRLM219970511001 04-NOV-2019

Myostatin: Free



Available in **spermvital** SEMEN WITH DOUBLE LIFESPAN

Progeny



Reserve Senior Male Champion at the National Hereford Calf Show



CONNELVIN OLLIE

CILL CORMAIC KASPER

CLONDRINA 1035TH

CAVE HILL STORM

CROWENSTOWN ARETHUSA IVY

KILSUNNY DOREENS IVY



- Exceptional New High Index Horned Hereford Sire for Irish AI
- €144 Replacement Index
- +7.8 Kgs Carcass Weight
- +4.6 Kgs Daughter Milk
- Hanley is a Superb Bull with Length, Width & Breed Character
- Purchased in Association with Irish Hereford Prime for their Beef Sustainability Programme

Eurostar Index		ICBF Nov. 24		
Within Breed	Trait	Value	Rel.	Across Breed
★★★★★	Replacement Index	€144	48%	★★★★★
★★★★★	Terminal Index	€85	51%	★★★
★★★★★	Dairy Beef Index	€108	52%	★★★★

Calving Difficulty

Trait	Value	Rel.	Breed avg:
Beef Cow Calving Difficulty	2.7%	60%	2.73%
Beef Hfr Calving Difficulty	5.8%	69%	6.05%

Expected Progeny Performance

Trait	Value	Rel.
Docility	0.16	44%
Carcass Weight (kg)	7.8	47%
Carcass Conformation	0.84	46%

Expected Daughter Performance

Trait	Value	Rel.
Daughter Calving Diff.	5.00	66%
Daughter Milk (kg)	4.60	44%
Daughter Calv. Interval	-4.73	42%



FREE TOWN PEERLESS

MARA HUMOROUS

FREE TOWN BENIGN

CARHUEFREE PRINCE

SKEHANORE BETSY B 847

SKEHANORE BETSY V 753



- Huge Satisfaction with Progeny Born on Irish Farms
- High Index Across Many Traits Including DBI, Calving & Gestation
- €112 DBI
- 282 Day Gestation (Top 2% of All Breeds)
- Purchased in Association with Irish Hereford Prime for their Beef Sustainability Programme
- Sexed Male Semen Available

Eurostar Index		ICBF Nov. 24		
Within Breed	Trait	Value	Rel.	Across Breed
★	Replacement Index	€57	59%	★
★★★★	Terminal Index	€70	76%	★★
★★★★★	Dairy Beef Index	€112	80%	★★★★★

Calving Difficulty

Trait	Value	Rel.	Breed avg:
Beef Cow Calving Difficulty	1.4%	85%	2.73%
Beef Hfr Calving Difficulty	3.8%	70%	6.05%

Expected Progeny Performance

Trait	Value	Rel.
Docility	0.18	59%
Carcass Weight (kg)	3.10	81%
Carcass Conformation	0.48	76%

Expected Daughter Performance

Trait	Value	Rel.
Daughter Calving Diff.	5.16	82%
Daughter Milk (kg)	1.20	42%
Daughter Calv. Interval	-2.15	42%

Hereford

Hereford



HE8547

CHESTNUTPOLL 1 STAR 45

HERIRLM215179040045 09-SEP-2020

Myostatin: Free



HE8935

RINGFORT 1 CARLOS

HERIRLM217220542302 12-AUG-2021

Myostatin: Free



Available in **spermital**
SEMEN WITH **DOUBLE LIFESPAN**

Progeny



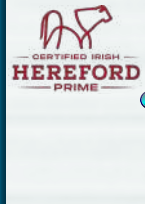
- No.1 Proven Hereford Sire Available on Beef Sub Index
- Elite Sire Across All Terminal Traits
- Carcass Weight +13.8 Kgs (Top 5% Of the Breed)
- Carcass Conformation +0.76 (Top 10% of the Breed)
- Use Star to Breed Big, Powerful Progeny with Performance
- Purchased in Association with Irish Hereford Prime for their Beef Sustainability Programme

Eurostar Index		ICBF Nov. 24		
Within Breed	Trait	Value	Rel.	Across Breed
★★★★★	Replacement Index	€127	54%	★★★★★
★★★★★	Terminal Index	€93	57%	★★★
★★★★★	Dairy Beef Index	€110	65%	★★★★

Calving Difficulty			
Beef Cow Calving Difficulty	4.3%	67%	Breed avg: 2.73%
Beef Hfr Calving Difficulty	7.3%	60%	Breed avg: 6.05%

Expected Progeny Performance				
★★★	Docility	0.10	55%	★★★★★
★★★★★	Carcass Weight (kg)	13.8	53%	★★
★★★★★	Carcass Conformation	0.76	51%	★

Expected Daughter Performance				
	Daughter Calving Diff.	5.88	65%	
★	Daughter Milk (kg)	1.90	48%	★★★
★★★★★	Daughter Calv. Interval	-6.92	43%	★★★★★



- High Index Polled Hereford Sire Across Many Traits
- Replacement Index €109
- DBI €120
- Super Quality Bull with Excellent Roundness & Natural Flushing
- Purchased in Association with Irish Hereford Prime for their Beef Sustainability Programme

Eurostar Index		ICBF Nov. 24		
Within Breed	Trait	Value	Rel.	Across Breed
★★★★	Replacement Index	€109	51%	★★★★
★★★★★	Terminal Index	€77	59%	★★★
★★★★★	Dairy Beef Index	€120	65%	★★★★★

Calving Difficulty			
Beef Cow Calving Difficulty	4.6%	78%	Breed avg: 2.73%
Beef Hfr Calving Difficulty	7.3%	76%	Breed avg: 6.05%

Expected Progeny Performance				
★★★★★	Docility	0.17	52%	★★★★★
★★★	Carcass Weight (kg)	4.70	53%	★
★★★★	Carcass Conformation	0.69	50%	★

Expected Daughter Performance				
	Daughter Calving Diff.	4.45	74%	
★★★	Daughter Milk (kg)	3.90	42%	★★★★★
★★★★	Daughter Calv. Interval	-4.76	38%	★★★★★

Hereford

Hereford



SI7353



SI4147

CLONAGH LONGSHOT FAB P ET

CURAHEEN GUNSHOT P

SIMIRLM213054191623 04-DEC-2019 Myostatin: Free

SIMIRLM171059830538 14-MAR-2015 Myostatin: Free



♀ Sexed Female Semen



Reserve Overall Simmental Champion Carrick Winter Fair 2024 | Top Priced Lot at British Simmental Sale in Worcester 2024 at 7,500gns | Senior Champion Simmental Premier Sale 2023



- Homozygous Polled Simmental Sire
- Easy Calving Choice at 3.1% C.D On Beef Cows
- Excels on Carcass Weight (+19.7Kgs) & Daughter Milk (+10.4 Kgs)

- Well Balanced Proven Simmental Sire on Both Replacement & Terminal Indices
- Daughters are Medium Sized with Milk & Calving Ability
- +8.2 Kgs Daughter Milk
- +32.3 Kgs Carcass Weight
- Use Gunshot to Breed Profitable Suckler Cows Without Compromising on Quality

Eurostar Index		ICBF Nov. 24		
Within Breed	Trait	Value	Rel.	Across Breed
★★	Replacement Index	€93	53%	★★★
★★★★	Terminal Index	€75	60%	★★
★★★	Dairy Beef Index	€60	63%	★

Eurostar Index		ICBF Nov. 24		
Within Breed	Trait	Value	Rel.	Across Breed
★★★	Replacement Index	€112	95%	★★★★
★★★★★	Terminal Index	€92	94%	★★★
★	Dairy Beef Index	€11	92%	★

Calving Difficulty			
Beef Cow Calving Difficulty	3.1%	86%	Breed avg: 3.90%
Beef Hfr Calving Difficulty	7.7%	56%	Breed avg: 8.43%

Calving Difficulty			
Beef Cow Calving Difficulty	7.3%	99%	Breed avg: 3.90%
Beef Hfr Calving Difficulty	14.4%	94%	Breed avg: 8.43%

Expected Progeny Performance				
★★★★	Docility	0.08	70%	★★★★
★★★	Carcass Weight (kg)	19.7	58%	★★★
★★★	Carcass Conformation	1.30	53%	★★

Expected Progeny Performance				
★★★★★	Docility	0.13	99%	★★★★★
★★★★★	Carcass Weight (kg)	32.3	99%	★★★★★
★★★★★	Carcass Conformation	1.82	99%	★★★★★

Expected Daughter Performance				
	Daughter Calving Diff.	4.05	80%	
★★★★	Daughter Milk (kg)	10.40	44%	★★★★★
★	Daughter Calv. Interval	1.24	40%	★

Expected Daughter Performance				
	Daughter Calving Diff.	4.96	98%	
★★★	Daughter Milk (kg)	8.20	97%	★★★★★
★★★★	Daughter Calv. Interval	-1.88	90%	★★★★

Simmental

Simmental



PT8923

HONGROIS

PARFRAM008576377326 03-DEC-2012 Myostatin: 2 X NT821



Gejpt

Progeny



#1 Carcass Conformation Parthenaise

#1 Easiest Calving Parthenaise



- Well Proven, High Index, Easy Calving Parthenaise Sire
- €130 Replacement Index
- 2.9% C.D on Beef Cows
- Progeny Born on Irish Farms are Very Muscular from a Young Age

Eurostar Index		ICBF Nov. 24		
Within Breed	Trait	Value	Rel.	Across Breed
★★★★	Replacement Index	€130	53%	★★★★★
★	Terminal Index	€88	61%	★★★
★★★	Dairy Beef Index	€125	58%	★★★★★

Calving Difficulty				
Beef Cow Calving Difficulty	2.9%	87%	Breed avg: 3.98%	
Beef Hfr Calving Difficulty	6.6%	53%	Breed avg: 8.19%	

Expected Progeny Performance				
★★	Docility	-0.06	33%	★
★	Carcass Weight (kg)	13.6	66%	★★
★★★★★	Carcass Conformation	2.40	64%	★★★★★

Expected Daughter Performance				
	Daughter Calving Diff.	8.09	79%	
★★★★★	Daughter Milk (kg)	7.40	64%	★★★★★
★★★	Daughter Calv. Interval	-0.32	34%	★★★

Parthenaise



PT8481

OBAMA

PARFRAM004962580653 01-JAN-2018 Myostatin: 2 X NT821

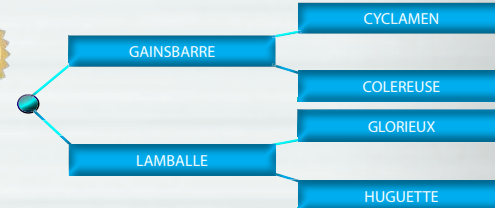


Gejpt

Progeny



#1 Carcass Weight Parthenaise



- Exceptional Parthenaise Sire with Outstanding Performance
- +29.4 Kgs Carcass Weight
- +2.22 Carcass Conformation
- Progeny Are Very Muscular with Weight Gain and Style
- Will Produce Exceptional Weanlings from Suckler Cows

Eurostar Index		ICBF Nov. 24		
Within Breed	Trait	Value	Rel.	Across Breed
★★	Replacement Index	€86	50%	★★
★★★★★	Terminal Index	€115	61%	★★★★★
★★	Dairy Beef Index	€117	56%	★★★★★

Calving Difficulty				
Beef Cow Calving Difficulty	5.4%	90%	Breed avg: 3.98%	
Beef Hfr Calving Difficulty	9.7%	53%	Breed avg: 8.19%	

Expected Progeny Performance				
★★★	Docility	-0.04	42%	★★
★★★★★	Carcass Weight (kg)	29.4	64%	★★★★★
★★★★★	Carcass Conformation	2.22	59%	★★★★★

Expected Daughter Performance				
	Daughter Calving Diff.	5.47	77%	
★★★	Daughter Milk (kg)	0.40	40%	★★
★★★★	Daughter Calv. Interval	-0.33	34%	★★★

Parthenaise



AU6286



AU8953

JOHNSTOWN NELSON 1039

DEERPARK ROWE

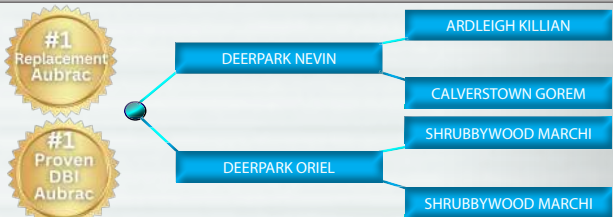
AUBIRLM213578621924 18-OCT-2018 Myostatin: 2 X F94L

AUBIRLM213548891089 22-NOV-2021 Myostatin: 2 X F94L



Progeny

Progeny



- High Replacement Index Aubrac Sire
- €176 Replacement Index
- +3.5 Kgs Daughter Milk
- Nelson Transmits Serious Power, Performance, Width & Weight for Age

- Rowe Displays Massive Indices Across All Traits
- Replacement Index of €213
- Terminal Index of €143
- DBI €187
- Proven Easy Calving Choice with Balanced Indices

Eurostar Index		ICBF Nov. 24		
Within Breed	Trait	Value	Rel.	Across Breed
★★★★	Replacement Index	€176	73%	★★★★★
★★	Terminal Index	€106	89%	★★★★
★	Dairy Beef Index	€110	90%	★★★★

Eurostar Index		ICBF Nov. 24		
Within Breed	Trait	Value	Rel.	Across Breed
★★★★★	Replacement Index	€213	48%	★★★★★
★★★★★	Terminal Index	€143	54%	★★★★★
★★★★★	Dairy Beef Index	€187	61%	★★★★★

Calving Difficulty			
Beef Cow Calving Difficulty	4.3%	93%	Breed avg: 2.44%
Beef Hfr Calving Difficulty	10.4%	85%	Breed avg: 5.86%

Calving Difficulty			
Beef Cow Calving Difficulty	2.3%	73%	Breed avg: 2.44%
Beef Hfr Calving Difficulty	5.0%	65%	Breed avg: 5.86%

Expected Progeny Performance				
★★★	Docility	0.00	89%	★★★
★★★	Carcass Weight (kg)	16.2	98%	★★★
★★★★	Carcass Conformation	1.90	97%	★★★★★

Expected Progeny Performance				
★★★★★	Docility	0.12	55%	★★★★★
★★★★★	Carcass Weight (kg)	21.5	49%	★★★★★
★★★★★	Carcass Conformation	2.10	45%	★★★★★

Expected Daughter Performance				
	Daughter Calving Diff.	5.43	89%	
★★★	Daughter Milk (kg)	3.50	56%	★★★
★★★★	Daughter Calv. Interval	-3.43	49%	★★★★★

Expected Daughter Performance				
	Daughter Calving Diff.	4.45	68%	
★★	Daughter Milk (kg)	2.80	43%	★★★
★★★	Daughter Calv. Interval	-2.97	36%	★★★★★

Aubrac

Aubrac



SA6253

MONTESQIEU

SALFRAM001536125009 08-NOV-2015

Myostatin: Free



Progeny



Irish Saler Spring Sale Champion 2023



- Huge Satisfaction with Montesqieu Progeny in Ireland
- Superb, Correct, Docile Progeny with Performance & Style
- Super Set of Balanced Indices
- €150 Replacement Index
- +16.2 Kgs Carcass Weight
- Ideal Choice to Produce Functional Suckler Cows with Docility, Milk & Calving Ability

Eurostar Index		ICBF Nov. 24		
Within Breed	Trait	Value	Rel.	Across Breed
★★	Replacement Index	€150	67%	★★★★★
★	Terminal Index	€62	82%	★★
★	Dairy Beef Index	€97	81%	★★★★

Calving Difficulty			
Beef Cow Calving Difficulty	3.6%	92%	Breed avg: 2.15%
Beef Hfr Calving Difficulty	8.6%	86%	Breed avg: 5.03%

Expected Progeny Performance				
★★★★	Docility	-0.04	86%	★★
★★★	Carcass Weight (kg)	16.2	90%	★★★
★	Carcass Conformation	0.89	87%	★

Expected Daughter Performance				
	Daughter Calving Diff.	5.15	88%	
★	Daughter Milk (kg)	3.80	61%	★★★
★★★★	Daughter Calv. Interval	-3.51	42%	★★★★★



BA4661

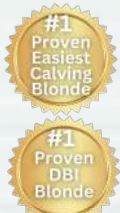
GLACON

BAQFRAM006413181065 05-SEP-2011

Myostatin: Free



Progeny



- High Terminal Indices
- €120 Terminal Index
- +2.48 Carcass Conformation (Top 1% Across Breeds)
- Extremely Easy Calving Sire Breeding Serious Muscled Progeny with Show Ring Appeal

Eurostar Index		ICBF Nov. 24		
Within Breed	Trait	Value	Rel.	Across Breed
★★★★	Replacement Index	€64	72%	★★
★★★★	Terminal Index	€120	85%	★★★★
★★★★★	Dairy Beef Index	€122	82%	★★★★★

Calving Difficulty			
Beef Cow Calving Difficulty	3.4%	96%	Breed avg: 3.53%
Beef Hfr Calving Difficulty	7.6%	91%	Breed avg: 7.94%

Expected Progeny Performance				
★★★★	Docility	-0.02	89%	★★
★★★	Carcass Weight (kg)	24.8	95%	★★★★
★★★★★	Carcass Conformation	2.48	94%	★★★★★

Expected Daughter Performance				
	Daughter Calving Diff.	5.79	93%	
★	Daughter Milk (kg)	-9.70	61%	★
★★★★★	Daughter Calv. Interval	-0.62	46%	★★★

Saler

Blonde d'Aquitaine



BA4131

BALTRA ICEMAN

BAQIRLM281604240676 05-NOV-2014

Myostatin: Free



Progeny



Champion Blonde Calf - Clogher Show '23



- Icesman Progeny Excel on Muscle, Power & Performance
- Pedigree Progeny are Performing Well on Show Circuits Throughout 24
- The Perfect Option to Produce Long, Stylish Weanlings That will Command Excellent Prices

Eurostar Index		ICBF Nov. 24		
Within Breed	Trait	Value	Rel.	Across Breed
★	Replacement Index	-€17	67%	★
★	Terminal Index	€88	78%	★★★
★	Dairy Beef Index	€11	72%	★

Calving Difficulty				
Beef Cow Calving Difficulty	7.5%	91%	Breed avg: 3.53%	
Beef Hfr Calving Difficulty	15.3%	64%	Breed avg: 7.94%	

Expected Progeny Performance				
★	Docility	-0.13	80%	★
★★★★★	Carcass Weight (kg)	29.3	89%	★★★★★
★★★	Carcass Conformation	2.14	86%	★★★★★

Expected Daughter Performance				
	Daughter Calving Diff.	3.95	81%	
★	Daughter Milk (kg)	-7.90	57%	★
★	Daughter Calv. Interval	4.07	46%	★



BA6709

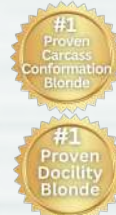
HAPPY

BAQFRAM006413382190 30-SEP-2012

Myostatin: Free



Progeny



- Highly Rated Extreme Muscled Sire
- Super Proven Terminal Figures in France
- 105 Calving
- 117 Muscle
- 130 Total Beef Merit

Eurostar Index		ICBF Nov. 24		
Within Breed	Trait	Value	Rel.	Across Breed
★★	Replacement Index	€43	56%	★
★	Terminal Index	€92	65%	★★★
★★★	Dairy Beef Index	€101	59%	★★★★★

Calving Difficulty				
Beef Cow Calving Difficulty	5.5%	89%	Breed avg: 3.53%	
Beef Hfr Calving Difficulty	10.0%	56%	Breed avg: 7.94%	

Expected Progeny Performance				
★★★★★	Docility	0.00	47%	★★★
★★	Carcass Weight (kg)	22.7	70%	★★★★★
★★★★★	Carcass Conformation	2.52	66%	★★★★★

Expected Daughter Performance				
	Daughter Calving Diff.	5.62	79%	
★	Daughter Milk (kg)	-9.30	52%	★
★★★★★	Daughter Calv. Interval	-1.20	43%	★★★

Blonde d'Aquitaine

Blonde d'Aquitaine

DRINEY NICE GUY (RO) (P)

SH2555

MSHIRLM218274930924

03-SEP-2023

Myostatin: Free

ICBF
Suitable for
SCEP
Scheme

NEW



Sire: Creaga Dice

- Special New Shorthorn Bull for Irish A.I.
- Long, Powerful, Correct Roan Bull Full of Breed Character
- Son of the Renowned 'Creaga Dice (CZB)'
- Nice Guy was Junior Champion & Reserve Overall Supreme Champion National Livestock Show Tullamore 2024

Eurostar Index		ICBF Nov. 24		
Within Breed	Trait	Value	Rel.	Across Breed
★★★	Replacement Index	€134	49%	★★★★★
★★★★★	Terminal Index	€45	50%	★
★★★★	Dairy Beef Index	€87	48%	★★★
Calving Difficulty				
Beef Cow Calving Difficulty		3.6%	68%	Breed avg: 2.69%
Beef Hfr Calving Difficulty		7.6%	66%	Breed avg: 6.10%
Expected Progeny Performance				
★★★★★	Docility	0.17	47%	★★★★★
★★★★★	Carcass Weight (kg)	11.0	46%	★★
★★★★★	Carcass Conformation	0.76	46%	★
Expected Daughter Performance				
	Daughter Calving Diff.	4.89	67%	
★	Daughter Milk (kg)	5.10	47%	★★★★★
★★	Daughter Calv. Interval	-1.89	45%	★★★★★



Shorthorn

Shorthorn



SH4609



SH6424

CLONINA EXPLORER 300 (RO)(P)

CASTLEFIN HOTSHOT (P)(ET)

MSHIRLM224618060300 25-FEB-2017 Myostatin: 1 X E226X

MSHGARM937352400214 06-MAY-2018 Myostatin: Free



Progeny

Progeny

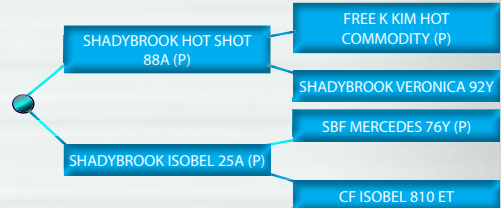
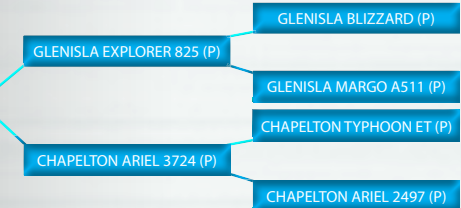


Champion Shorthorn Carrick Winter Fair 2024

Champion Shorthorn Carrick Winter Fair 2023

2024 Connacht Shorthorn Bull Calf Champion

All Ireland Heifer Calf Champion Strokestown Show 2023



- Explorer Is Breeding Excellent Progeny with Huge Performance
- +23.5 Kgs Carcass Weight (Top 1% of the Breed)
- +1.04 Carcass Conformation (Top 1% of the Breed)
- +6.9 Kgs Daughter Milk
- Progeny are Very Stylish with Superb Muscling & Colour

- The Shorthorn Sire that Ticks all the Boxes, Breeding Quality Progeny
- Proven Easy Calving Sire
- 2.3% C.D On Beef Cows
- +13.6 Kgs Carcass Weight
- +9.9 Kgs Daughter Milk
- Complete Outcross Pedigree for Irish Breeders

Eurostar Index		ICBF Nov. 24		
Within Breed	Trait	Value	Rel.	Across Breed
★	Replacement Index	€102	80%	★★★★★
★★★★★	Terminal Index	€75	86%	★★
★	Dairy Beef Index	€49	84%	★

Eurostar Index		ICBF Nov. 24		
Within Breed	Trait	Value	Rel.	Across Breed
★★★★	Replacement Index	€138	57%	★★★★★
★★★★★	Terminal Index	€60	74%	★★
★★★★★	Dairy Beef Index	€114	70%	★★★★★

Calving Difficulty			
Beef Cow Calving Difficulty	6.8%	97%	Breed avg: 2.69%
Beef Hfr Calving Difficulty	14.0%	85%	Breed avg: 6.10%

Calving Difficulty			
Beef Cow Calving Difficulty	2.3%	87%	Breed avg: 2.69%
Beef Hfr Calving Difficulty	5.8%	81%	Breed avg: 6.10%

Expected Progeny Performance				
★★★★★	Docility	0.26	95%	★★★★★
★★★★★	Carcass Weight (kg)	23.5	96%	★★★★★
★★★★★	Carcass Conformation	1.04	95%	★★

Expected Progeny Performance				
★★★	Docility	0.11	82%	★★★★★
★★★★★	Carcass Weight (kg)	13.6	81%	★★
★★★★★	Carcass Conformation	1.06	77%	★★

Expected Daughter Performance				
	Daughter Calving Diff.	5.48	94%	
★	Daughter Milk (kg)	6.90	81%	★★★★★
★	Daughter Calv. Interval	-0.42	59%	★★★

Expected Daughter Performance				
	Daughter Calving Diff.	5.57	84%	
★★★★	Daughter Milk (kg)	9.90	34%	★★★★★
★	Daughter Calv. Interval	0.04	38%	★★

Shorthorn

Shorthorn

CARROWBOY VEGAS 2

AA1506

AANIRLM226549940046

06-SEP-2022

Myostatin: Free



NEW



Eurostar Index **ICBF Nov. 24**

Within Breed	Trait	Value	Rel.	Across Breed
★	Replacement Index	€94	42%	★★★
★★★★★	Terminal Index	€119	46%	★★★★★
★★★★★	Dairy Beef Index	€159	45%	★★★★★

Calving Difficulty

Beef Cow Calving Difficulty	1.2%	60%	Breed avg: 1.96%
Beef Hfr Calving Difficulty	3.6%	53%	Breed avg: 4.76%

Expected Progeny Performance

★★	Docility	-0.03	38%	★★
★★★★★	Carcass Weight (kg)	18.3	46%	★★★★★
★★★★★	Carcass Conformation	0.82	37%	★

Expected Daughter Performance

	Daughter Calving Diff.	6.41	58%	
★★★	Daughter Milk (kg)	7.00	39%	★★★★★
★	Daughter Calv. Interval	-0.49	35%	★★★

- One of The Most Exciting Angus Bulls to Enter Irish A.I. for Many Years
- Serious Carcass Bull with Length, Style and a Superb Angus Head
- Vegas Excels on All Terminal Traits
- Terminal Index €119
- Dairy Beef Index €159
- Carcass Weight +18.3 Kgs
- Test Sire



Angus

Angus



AA1964

FELLFORT W REX 1643

AA1964: 03-AUG-2023 Myostatin: Free



- Rex is a New Superstar Angus for Our Ever Growing Beef Market
- Son of The Famous Prime Lad With +13.5 Kgs Carc. Weight
- Sky High Across All Indices
- Replacement Index €225
- Terminal Index €134
- DBI €181
- Trait Leader on Calving Index, Carcass Traits and Days to Slaughter
- Test Sire

Eurostar Index		ICBF Nov. 24		
Within Breed	Trait	Value	Rel.	Across Breed
★★★★★	Replacement Index	€225	49%	★★★★★
★★★★★	Terminal Index	€134	52%	★★★★★
★★★★★	Dairy Beef Index	€181	52%	★★★★★

Calving Difficulty			
Beef Cow Calving Difficulty	0.6%	72%	Breed avg: 1.96%
Beef Hfr Calving Difficulty	3.2%	60%	Breed avg: 4.76%

Expected Progeny Performance				
★★★★★	Docility	0.05	48%	★★★★★
★★★★★	Carcass Weight (kg)	13.5	47%	★★
★★★★★	Carcass Conformation	0.88	46%	★

Expected Daughter Performance				
	Daughter Calving Diff.	5.68	68%	
★★★★★	Daughter Milk (kg)	12.70	46%	★★★★★
★★★★★	Daughter Calv. Interval	-6.65	39%	★★★★★

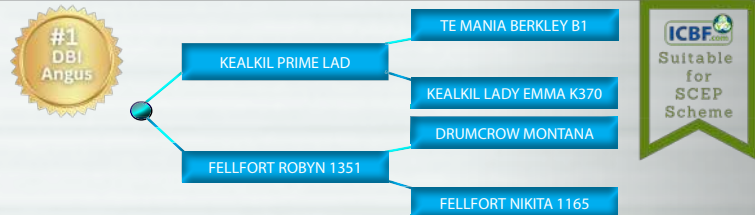
Angus



AA1943

FELLFORT W ROBO 1637

AA1943: 30-JUL-2023 Myostatin: Free



- The No.1 Angus Sire Available in Ireland on DBI at a Massive €194
- Exceptionally Well-Balanced Index, Being a Trait Leader on
- All Calving Indices
- Gestation Length
- Carcass Conformation
- Age Of Slaughter
- Son of The No.1 Proven Dairy Beef Sire Kealkil Prime Lad (AA4743)
- Test Sire

Eurostar Index		ICBF Nov. 24		
Within Breed	Trait	Value	Rel.	Across Breed
★★★★★	Replacement Index	€217	49%	★★★★★
★★★★★	Terminal Index	€130	51%	★★★★★
★★★★★	Dairy Beef Index	€194	52%	★★★★★

Calving Difficulty			
Beef Cow Calving Difficulty	0.6%	71%	Breed avg: 1.96%
Beef Hfr Calving Difficulty	2.4%	60%	Breed avg: 4.76%

Expected Progeny Performance				
★★★★★	Docility	0.05	49%	★★★★★
★★★★★	Carcass Weight (kg)	11.5	47%	★★
★★★★★	Carcass Conformation	0.98	46%	★★

Expected Daughter Performance				
	Daughter Calving Diff.	7.44	68%	
★★★★★	Daughter Milk (kg)	8.80	47%	★★★★★
★★★★★	Daughter Calv. Interval	-6.34	39%	★★★★★

Angus



AA9619

KINGSBURY RED VICTOR

AA NIRLM223045240261 21-FEB-2022 Myostatin: Free



Available in **spermvital**
SEMEN WITH
DOUBLE LIFESPAN



AA4743

KEALKIL PRIME LAD

AA NIRLM141089640493 07-SEP-2017 Myostatin: Free



Available in **spermvital**
SEMEN WITH
DOUBLE LIFESPAN

♀ Sexed Female Semen ♂ Sexed Male Semen

Progeny



1st Prize Winner Munster Angus Breeders Sale April 2024

€6,000 at the Irish Aberdeen Angus Extravaqanza



- Superb Example of the Red Angus Breed
- Displays All of the Best Attributes of the Breed
- Superb Head & Breed Character
- Excellent Conformation & Length
- Sired by HW Red Doom

Eurostar Index		ICBF Nov. 24		
Within Breed	Trait	Value	Rel.	Across Breed
★ ★ ★	Replacement Index	€130	40%	★ ★ ★ ★ ★
★ ★ ★ ★	Terminal Index	€86	42%	★ ★ ★
★ ★ ★ ★ ★	Dairy Beef Index	€142	44%	★ ★ ★ ★ ★

Calving Difficulty			
Beef Cow Calving Difficulty	3.1%	59%	Breed avg: 1.96%
Beef Hfr Calving Difficulty	6.0%	50%	Breed avg: 4.76%

Expected Progeny Performance				
★ ★ ★ ★ ★	Docility	0.08	34%	★ ★ ★ ★ ★
★ ★ ★ ★	Carcass Weight (kg)	10.7	37%	★ ★
★ ★ ★ ★	Carcass Conformation	0.81	35%	★

Expected Daughter Performance				
	Daughter Calving Diff.	4.96	56%	
★ ★ ★	Daughter Milk (kg)	6.80	38%	★ ★ ★ ★ ★
★ ★	Daughter Calv. Interval	-2.91	34%	★ ★ ★ ★ ★

Angus



- Irelands No.1 Proven Sire Across All Breeds Available on Replacement Index & DBI
- Replacement Index €264
- Dairy Beef Index €176
- Sired Pedigree Heifers to Highs of €6000 at the Irish Aberdeen Angus Extravaqanza
- Ideal Choice for Pedigree Maidens

Eurostar Index		ICBF Nov. 24		
Within Breed	Trait	Value	Rel.	Across Breed
★ ★ ★ ★ ★	Replacement Index	€264	87%	★ ★ ★ ★ ★
★ ★ ★ ★ ★	Terminal Index	€112	94%	★ ★ ★ ★ ★
★ ★ ★ ★ ★	Dairy Beef Index	€176	95%	★ ★ ★ ★ ★

Calving Difficulty			
Beef Cow Calving Difficulty	1.0%	96%	Breed avg: 1.96%
Beef Hfr Calving Difficulty	3.9%	97%	Breed avg: 4.76%

Expected Progeny Performance				
★ ★	Docility	-0.02	97%	★ ★
★	Carcass Weight (kg)	2.1	99%	★
★ ★ ★ ★ ★	Carcass Conformation	0.94	99%	★

Expected Daughter Performance				
	Daughter Calving Diff.	5.67	96%	
★ ★ ★ ★ ★	Daughter Milk (kg)	11.40	85%	★ ★ ★ ★ ★
★ ★ ★ ★ ★	Daughter Calv. Interval	-11.14	60%	★ ★ ★ ★ ★

Angus



AA8172

DRUMCROW TRIBESMAN

AA NIRLM216633150834 25-SEP-2020 Myostatin: Free



Available in **spermvital** SEMEN WITH DOUBLE LIFESPAN

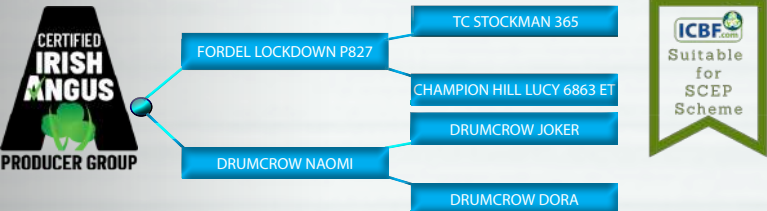
Progeny



Senior All-Ireland Irish Angus Bull Calf Champion 2024

Junior All-Ireland Irish Angus Bull Calf Champion 2024

Senior Champion at €7,200 Irish Angus Elite Show & Sale



- The Most Talked About Angus Sire on The Pedigree Circuit 2024
- Sire of Numerous Pedigree Champions Throughout the Summer
- Sire of Senior Male, Reserve Senior Male and Junior Male Champion at the Irish Angus Elite Sale 2024
- Producing Powerful Progeny with Excellent Structure, Length and Angus Character
- Purchased in Association with The Irish Angus Producer Group

Eurostar Index		ICBF Nov. 24		
Within Breed	Trait	Value	Rel.	Across Breed
★★★★	Replacement Index	€143	60%	★★★★★
★	Terminal Index	€56	72%	★★
★	Dairy Beef Index	€95	75%	★★★

Calving Difficulty			
Beef Cow Calving Difficulty	2.7%	91%	Breed avg: 1.96%
Beef Hfr Calving Difficulty	6.6%	81%	Breed avg: 4.76%

Expected Progeny Performance				
★★★★★	Docility	0.07	75%	★★★★★
★★★	Carcass Weight (kg)	6.7	73%	★
★	Carcass Conformation	0.60	63%	★

Expected Daughter Performance				
	Daughter Calving Diff.	7.19	84%	
★★★★★	Daughter Milk (kg)	15.0	45%	★★★★★
★	Daughter Calv. Interval	-2.31	40%	★★★★★

Angus



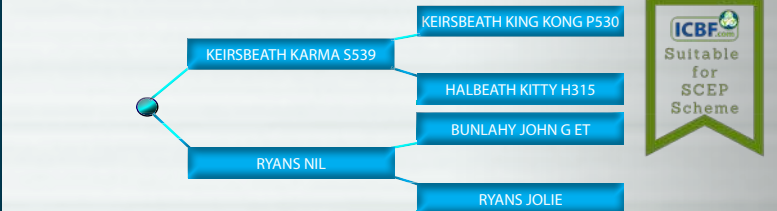
AA9843

RYANS VICTORIOUS

AA NIRLM217306310302 13-NOV-2022 Myostatin: Free



Available in **spermvital** SEMEN WITH DOUBLE LIFESPAN



- Ryans Victorious was Crowned Aldi Irish Angus All-Ireland Intermediate Bull Calf Champion in Iverk 2023
- +13.1kg Carcass Weight
- This New Sire Has Super Style, Width, Shape, Length & Bone
- Super Pedigree Including Keirsbeath Karma, Bunlahy John G and Luddenmore Fionn

Eurostar Index		ICBF Nov. 24		
Within Breed	Trait	Value	Rel.	Across Breed
★★	Replacement Index	€103	48%	★★★
★★★★★	Terminal Index	€95	52%	★★★
★★★	Dairy Beef Index	€121	51%	★★★★★

Calving Difficulty			
Beef Cow Calving Difficulty	2.1%	67%	Breed avg: 1.96%
Beef Hfr Calving Difficulty	5.6%	61%	Breed avg: 4.76%

Expected Progeny Performance				
★★★★★	Docility	0.05	46%	★★★★★
★★★★★	Carcass Weight (kg)	13.1	52%	★★
★★★★★	Carcass Conformation	0.89	47%	★

Expected Daughter Performance				
	Daughter Calving Diff.	5.71	65%	
★★	Daughter Milk (kg)	5.60	44%	★★★★★
★	Daughter Calv. Interval	-1.71	38%	★★★★★

Angus



AA8938

LISS BRUNO Y120

AAANIRLM222377192120 01-JAN-2022 Myostatin: Free



AA5373

STOUPHILL BOMBER T182

AANGBRM10639540018 08-APR-2017 Myostatin: Free



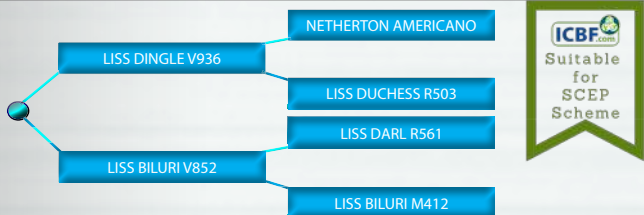
Progeny



Overall Male Champion at Fermanagh Pedigree Breeders Calf Show

Overall Angus Champion Carrick Winter Fair 2023

Champion Bull Calf at the NI Aberdeen Angus Calf Show 2022



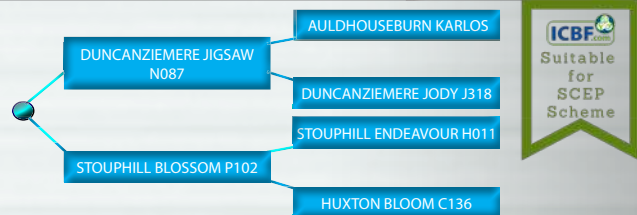
- Bruno Displays All the Best Characteristics of the Angus Breed
- €150 Replacement Index
- 1.6% C.D on Beef Cows
- From an Outstanding Cow Family on Both Sides of His Pedigree
- First Pedigree Calves Born in Ireland Are Easily Born and Very Impressive

Eurostar Index		ICBF Nov. 24		
Within Breed	Trait	Value	Rel.	Across Breed
★★★★	Replacement Index	€150	45%	★★★★★
★★★★★	Terminal Index	€98	48%	★★★
★★★★★	Dairy Beef Index	€150	47%	★★★★★

Calving Difficulty			
Beef Cow Calving Difficulty	1.6%	60%	Breed avg: 1.96%
Beef Hfr Calving Difficulty	4.1%	52%	Breed avg: 4.76%

Expected Progeny Performance				
★★★★★	Docility	0.10	63%	★★★★★
★★★★	Carcass Weight (kg)	10.7	48%	★★
★★★★★	Carcass Conformation	0.85	42%	★

Expected Daughter Performance				
	Daughter Calving Diff.	5.32	58%	
★	Daughter Milk (kg)	4.40	42%	★★★★
★★★★	Daughter Calv. Interval	-5.05	36%	★★★★★



- Bomber Is a Popular Choice Amongst Pedigree Breeders
- Super Natural Width & Power to His Progeny Along with Superb Breed Character
- Use Bomber to Stand Out in The Show Ring

Eurostar Index		ICBF Nov. 24		
Within Breed	Trait	Value	Rel.	Across Breed
★	Replacement Index	€72	72%	★★
★★★★	Terminal Index	€91	88%	★★★
★★★★	Dairy Beef Index	€136	88%	★★★★★

Calving Difficulty			
Beef Cow Calving Difficulty	3.1%	96%	Breed avg: 1.96%
Beef Hfr Calving Difficulty	6.7%	89%	Breed avg: 4.76%

Expected Progeny Performance				
★	Docility	-0.06	89%	★
★★★★	Carcass Weight (kg)	9.8	98%	★
★★★★★	Carcass Conformation	1.05	97%	★★

Expected Daughter Performance				
	Daughter Calving Diff.	5.52	93%	
★	Daughter Milk (kg)	-1.20	60%	★
★★★	Daughter Calv. Interval	-3.83	44%	★★★★★

Angus

Angus

Find Our Full Sire Range on Our Website

SOME OF OUR OTHER SIRES AVAILABLE

www.doveagenetics.ie

Speckle Park

NEW



Rockview Klassy SP1299

Repl. €153	Term. €24	DBI €100	Cow C.D. 1.1%	Hfr C.D. 2.7%
---------------	--------------	-------------	------------------	------------------

Belted Galloway



Ballylough Ranger BY4875

Repl. €133	Term. -€39	DBI €54	Cow C.D. 0.5%	Hfr C.D. 1.8%
---------------	---------------	------------	------------------	------------------

Maine Anjou



Houston

MA6712

Repl. €91	Term. €60	DBI €67	Cow C.D. 6.8%	Hfr C.D. 11.4%
--------------	--------------	------------	------------------	-------------------

2025 DIY AI TRAINING COURSES

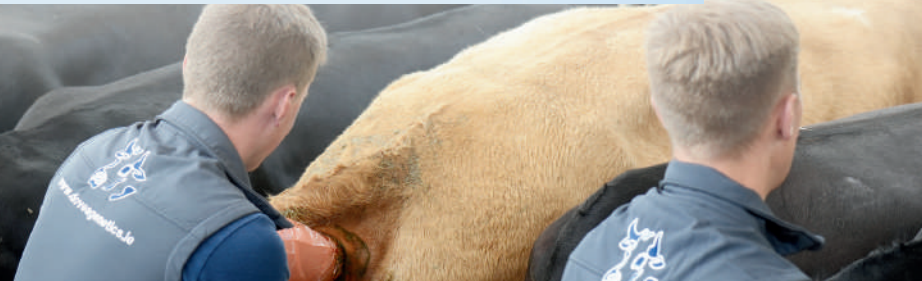
Dovea Genetics offer Ireland's most valuable, most complete, and professional D.I.Y. A.I. training approved by the DAFM. We offer personal attention from experienced personnel to maximise the learning experience for the participants.

The courses run over four days and are a mixture of theory and practical experience. Upon successful completion of the course, participants will be issued with a training certificate from Dovea Genetics and a DIY AI Licence from DAFM.

The current locations for training courses are County Tipperary & County Monaghan.

If interested in the training course please contact Hannah Woods on 0504-21755 or email hwoods@doveagenetics.ie

A number of courses are ran in conjunction with Macra Skillnet, which can be booked under Courses on the Macra Skillnet Website



Dovea GENETICS

HIGH FLYERS 2024



BB8337
BOHERARD
OVERDOSE

Sold for €17,200
Carrick Winter Fair

SI4147
CURAHEEN
GUNSHOT

Reserve Simmental Champion
Carrick Winter Fair
Sold for €3,650

MBP
MILBROOK
DARTANGAN

New Record Holder
Carrick Winter Fair
Sold for €30,000

BB8337
BOHERARD
OVERDOSE

Sold for €15,000
Carrick Winter Fair

LM6529
CLADDAGH
MCCABE

Highest Priced Female Ever
in Northern Ireland
Sold for 25,000gns

AA4638
KEIRSBETH
KARMA

All-Ireland Champion
& Top Priced Female at the Irish
Aberdeen Angus Extravaganza
Sold for €9,000

HE7548
CORLISMORE
CORMAC

Reserve Champion
Autumn Irish Hereford Breed
Society Heifer Show & Sale
Sold for €4,250

S605
FURY
ACTION

Overall Champion
RUAS Beef & Lamb
Championships
Sold for £18,000

BB8337
BOHERARD
OVERDOSE

Overall Champion
Royal Welsh Show
& Reserve Junior Interbreed
Champion Royal Highland Show

BB4438
AN DE
BEAUFAUX

Overall Champion
Markethill Christmas
Show & Sale
Sold for £6,500

SH4609
CLONINA
EXPLORER

Overall Shorthorn Champion
Carrick Winter Fair

CH2304
CLENAGH
JASPER 2

Overall Continental Junior
Champion
Stars of the Future Calf Show
Stirling

BB2280
HAZARD VD
PANNEMEERS

All-Ireland Commercial
Female Calf Champion
& Reserve Overall Tullamore
Commercial Calf Champion

AA8172
DRUMCROW
TRIBESMAN

All-Ireland Bull Calf Champion
born between August 2023 &
October 2023

BB8019
NEGRITA
DU LAC

Overall Blue Champion
Elite Commercial Haltered
Sale Stranorlar
Sold for €9,700

LM6529
CLADDAGH
MCCABE (ET)

Overall Calf Champion
RUAS Winter Fair
Sold for Record Price of £16,500

AA8172
DRUMCROW
TRIBESMAN

All-Ireland Bull Calf Champion
born between November 2023
& January 2024

BB8736
RED LIONS DE
LA ROUGE
CENSE

Top Price
Elite Commercial Haltered
Sale Stranorlar
Sold for €19,000

BB4396
JAMES BOND VD
JORCHRISHOEVE

Overall Commercial Champion
Balmoral Show

AA8172
DRUMCROW
TRIBESMAN

Senior Male Champion
Irish Angus Elite Show & Sale
Sold for €7,200

VDC
VICTORIEUX
D'AU CHENE

2nd Highest Price
Carrick Winter Fair
Sold for €18,000

LM6529
CLADDAGH
MCCABE

Elite Commercial Haltered Sale
Stranorlar
Sold for €12,000

BB8337
BOHERARD
OVERDOSE

All-Ireland Belgian Blue
Heifer Calf Champion
& Reserve Overall Champion
Tullamore Show

BBX104
DARTAGNAN
RED

Top Priced Lot at Jalex Select
October 2024
Sold for £18,000

BB8337
BOHERARD
OVERDOSE

Interbreed Calf Champion
Borderway Agri Expo



+353 (0) 504 21755

info@doveagenetics.ie

AREA REPRESENTATIVES



COLM CHAMBERS
CAVAN, LONGFORD &
MONAGHAN
087 6703093



JOHN O'REILLY
CLARE
087 7975471



JERRY FOLEY
CORK
087 9209632



COLIN O'LEARY
MID & WEST CORK
087 6265990



PEARSE MC NAMEE
DONEGAL
086 8106474



NICHOLAS BERGIN
GALWAY & OFFALY
086 2515869



TIM FITZMAURICE
KERRY
087 2359709



DENIS GALVIN
WEST KERRY
086 6095081



PAUL RYAN
KILKENNY & WATERFORD
086 2537087



TOM TYNAN
NE KILKENNY, CARLOW &
KILDARE
087 7591805



TONY FLANNERY
LAOIS & TIPPERARY
086 8068006



DAVID GOULDING
NORTH TIPPERARY
087 9380367



CIAN MC GLOIN
LEITRIM, ROSCOMMON,
MAYO & SLIGO
087 4073700



MICHAEL KINANE
LIMERICK
087 6252873



PAT MC CULLEN
MEATH & WESTMEATH
087 9062041



KIERAN SHIELDS
LOUTH
086 8283315



PATRICK GLEESON
WEXFORD & WICKLOW
086 3080595



PAT HACKETT
NORTHERN IRELAND
07946 094744



RICHARD LAW
NORTHERN IRELAND
07716 650954

